

Product datasheet

Recombinant Human STRAD protein ab164904

1 Image

Description

Product name	Recombinant Human STRAD protein
Expression system	Wheat germ
Protein length	Full length protein
Animal free	No
Nature	Recombinant
Species	Human
Sequence	<pre> MSFLTNDASSESIASFQKQEVMSFLPEGGCYELLTVI GKGFEDLMTVNL ARYKPTGEYVTVRRINLEACSNEMVTFLLQELHVSRLF NHPNVPYRATF IADNELWVVTSEFMAYGSAKDLICTHFMDGMNELAIAYL QGVKALDYIH HMGYVHRSVKASHILISVDGKVYLSGLRSNLSMISHGQ RQRVVHDFPKYS VKVLPWLSPEVLQQNLQGYDAKSDIYVSGITACELANG HVPFKDMPATQM LLEKLNQTVPCLLDTSTIPAEELTMSPSRSVANSGLSD SLTTSTPRPSNG DSPSHPYHRTFSPHFHFVEQCLQRNPDARYPCWPG PGLRESRGCSGG </pre>
Amino acids	1 to 348
Tags	GST tag N-Terminus
Additional sequence information	This sequence is the full length protein isoform 2 (Q7RTN6-2).

Specifications

Our [Abpromise guarantee](#) covers the use of **ab164904** in the following tested applications. The application notes include recommended starting dilutions; optimal dilutions/concentrations should be determined by the end user.

Applications	Western blot ELISA
Form	Liquid
Additional notes	Protein concentration is above or equal to 0.05 mg/ml.

This product was previously labelled as LYK5

Preparation and Storage

Stability and Storage

Shipped on dry ice. Upon delivery aliquot and store at -80°C. Avoid freeze / thaw cycles.

pH: 8.00

Constituents: 0.31% Glutathione, 0.79% Tris HCl

General Info

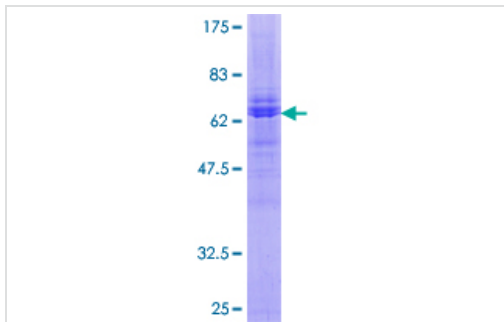
Relevance

Members of the STE-20 like kinase family are known to stimulate MAPK pathways by directly activating MAPKKK. LYK5 is a novel pseudokinase member of this family consisting of a STE-20 like kinase domain but lacks several residues that are required for its catalytic activity. It specifically binds LKB1 and plays a key role in regulating the tumor suppressor activities of LKB1. It functions as an upstream activator of LKB1 and also directs the sub-cellular localization of LKB1 by anchoring it in the cytoplasm. LYK5-LKB1 interaction results in phosphorylation of LYK5 and enhanced autophosphorylation of LKB1.

Cellular localization

Cytoplasmic and Nuclear

Images



ab164904 on a 12.5% SDS-PAGE stained with Coomassie Blue.

SDS-PAGE - Recombinant Human STRAD protein
(ab164904)

Please note: All products are "FOR RESEARCH USE ONLY. NOT FOR USE IN DIAGNOSTIC PROCEDURES"

Our Abpromise to you: Quality guaranteed and expert technical support

- Replacement or refund for products not performing as stated on the datasheet
- Valid for 12 months from date of delivery
- Response to your inquiry within 24 hours
- We provide support in Chinese, English, French, German, Japanese and Spanish
- Extensive multi-media technical resources to help you

- We investigate all quality concerns to ensure our products perform to the highest standards

If the product does not perform as described on this datasheet, we will offer a refund or replacement. For full details of the Abpromise, please visit <https://www.abcam.com/abpromise> or contact our technical team.

Terms and conditions

- Guarantee only valid for products bought direct from Abcam or one of our authorized distributors