

Product datasheet

Recombinant Human SUMF2 protein ab161818

1 Image

Overview

Product name	Recombinant Human SUMF2 protein
Protein length	Protein fragment

Description

Nature	Recombinant
Source	Wheat germ
Amino Acid Sequence	
Species	Human
Sequence	QATSMVQLQGGRFLMGTNSPDSRDGEGPVREATVKP FAIDIFPVTNKDFR DFVREKKYRTEAEMFGWSFVFEDFVSDLRNKATQP MKSVLWWLPVEKAF
Amino acids	26 to 125
Tags	GST tag N-Terminus

Specifications

Our [Abpromise guarantee](#) covers the use of **ab161818** in the following tested applications.

The application notes include recommended starting dilutions; optimal dilutions/concentrations should be determined by the end user.

Applications	ELISA Western blot
Form	Liquid
Additional notes	Protein concentration is above or equal to 0.05 mg/ml.

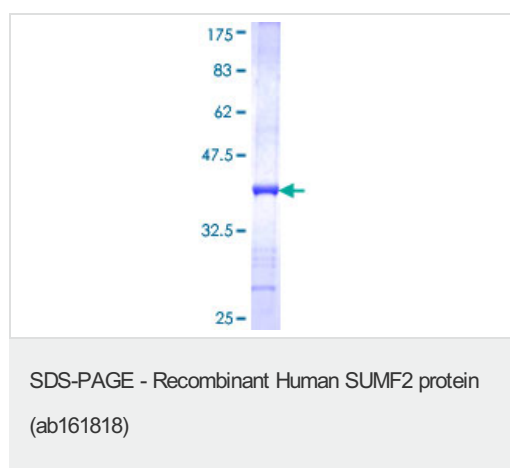
Preparation and Storage

Stability and Storage	Shipped on dry ice. Upon delivery aliquot and store at -80°C. Avoid freeze / thaw cycles. pH: 8.00 Constituents: 0.31% Glutathione, 0.79% Tris HCl
------------------------------	----------------------------------------------------------------------------------------------------------------------------------------------------------

General Info

Function	Lacks formyl-glycine generating activity and is unable to convert newly synthesized inactive sulfatases to their active form. Inhibits the activation of sulfatases by SUMF1.
Tissue specificity	Detected in heart, brain, placenta, lung, liver, skeletal muscle, kidney and pancreas. Highest levels in kidney, liver and placenta.
Sequence similarities	Belongs to the sulfatase-modifying factor family.
Cellular localization	Endoplasmic reticulum lumen.

Images



ab161818 on a 12.5% SDS-PAGE stained with Coomassie Blue.

Please note: All products are "FOR RESEARCH USE ONLY. NOT FOR USE IN DIAGNOSTIC PROCEDURES"

Our Abpromise to you: Quality guaranteed and expert technical support

- Replacement or refund for products not performing as stated on the datasheet
- Valid for 12 months from date of delivery
- Response to your inquiry within 24 hours
- We provide support in Chinese, English, French, German, Japanese and Spanish
- Extensive multi-media technical resources to help you
- We investigate all quality concerns to ensure our products perform to the highest standards

If the product does not perform as described on this datasheet, we will offer a refund or replacement. For full details of the Abpromise, please visit <https://www.abcam.com/abpromise> or contact our technical team.

Terms and conditions

- Guarantee only valid for products bought direct from Abcam or one of our authorized distributors