

Product datasheet

Recombinant Human SYCE3 protein ab131666

1 Image

Overview

<b>Product name</b>	Recombinant Human SYCE3 protein
<b>Protein length</b>	Full length protein

Description

<b>Nature</b>	Recombinant
<b>Source</b>	Escherichia coli
<b>Amino Acid Sequence</b>	
<b>Accession</b>	<a href="#">A1L190</a>
<b>Species</b>	Human
<b>Sequence</b>	<b>MGSSHHHHHH SSGLVPRGSH</b> MDDADPEERN YDNMLKMLSD LNKDLEKLL EMEKISVQAT WMAYDMVVMR TNPTLAESMR RLEDAFVNCK EEMEKNWQEL LHETKQRL
<b>Molecular weight</b>	13 kDa including tags
<b>Amino acids</b>	1 to 88
<b>Tags</b>	His tag N-Terminus

Specifications

Our [Abpromise guarantee](#) covers the use of **ab131666** in the following tested applications.

The application notes include recommended starting dilutions; optimal dilutions/concentrations should be determined by the end user.

<b>Applications</b>	SDS-PAGE Mass Spectrometry
<b>Mass spectrometry</b>	MALDI-TOF
<b>Purity</b>	> 90 % SDS-PAGE. Purified using conventional chromatography techniques.
<b>Form</b>	Liquid

Preparation and Storage

## Stability and Storage

Shipped at 4°C. Store at +4°C short term (1-2 weeks). Upon delivery aliquot. Store at -20°C or -80°C. Avoid freeze / thaw cycle.

pH: 8.00

Constituents: 0.03% DTT, 0.32% Tris HCl, 20% Glycerol, 1.17% Sodium chloride

## General Info

---

### Function

Major component of the transverse central element of synaptonemal complexes (SCS), formed between homologous chromosomes during meiotic prophase. Required for chromosome loading of the central element-specific SCS proteins, and for initiating synapsis between homologous chromosomes. Chromosome loading appears to require SYCP1. Required for fertility.

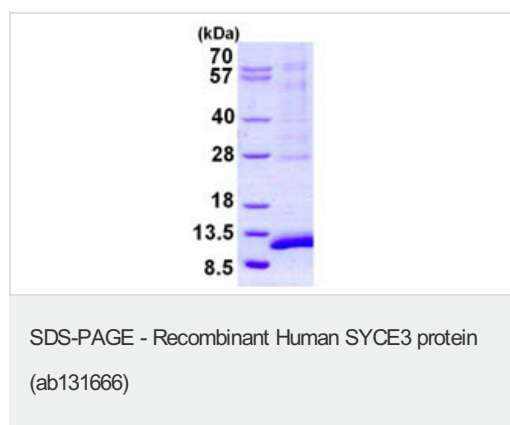
### Cellular localization

Nucleus. Chromosome. Colocalizes with SYCE1 in the central elements.

---

## Images

---



15% SDS-PAGE showing ab131666 at approximately 12.8 kDa (3µg).

**Please note:** All products are "FOR RESEARCH USE ONLY. NOT FOR USE IN DIAGNOSTIC PROCEDURES"

## Our Abpromise to you: Quality guaranteed and expert technical support

---

- Replacement or refund for products not performing as stated on the datasheet
- Valid for 12 months from date of delivery
- Response to your inquiry within 24 hours
- We provide support in Chinese, English, French, German, Japanese and Spanish
- Extensive multi-media technical resources to help you
- We investigate all quality concerns to ensure our products perform to the highest standards

If the product does not perform as described on this datasheet, we will offer a refund or replacement. For full details of the Abpromise, please visit <https://www.abcam.com/abpromise> or contact our technical team.

## Terms and conditions

---

- Guarantee only valid for products bought direct from Abcam or one of our authorized distributors