

Product datasheet

Recombinant Human Synapsin I protein ab152720

1 Image

Description

Product name	Recombinant Human Synapsin I protein	
Expression system	Wheat germ	
Accession	P17600	
Protein length	Protein fragment	
Animal free	No	
Nature	Recombinant	
Species	Human	
Sequence	EIFGGLDICAVEALHGKDGRDHIIIEVVGSSMPLIGDHQDED KQLVELVV NKMAQALPRQRQRDASPGRGSHGQTPSPGALPLGRQTS Q	
Predicted molecular weight	36 kDa including tags	
Amino acids	362 to 450	

Specifications

Our [Abpromise guarantee](#) covers the use of **ab152720** in the following tested applications.

The application notes include recommended starting dilutions; optimal dilutions/concentrations should be determined by the end user.

Applications	SDS-PAGE
	Western blot
	ELISA

Form	Liquid
-------------	--------

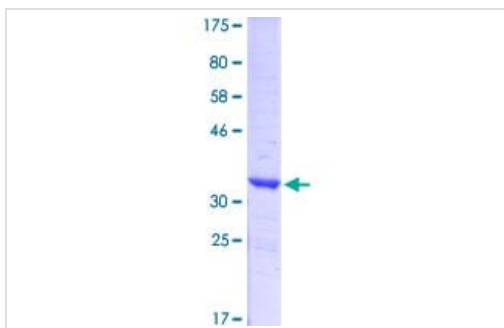
Preparation and Storage

Stability and Storage	Shipped on dry ice. Upon delivery aliquot and store at -80°C. Avoid freeze / thaw cycles. pH: 8 Constituents: 0.31% Glutathione, 0.79% Tris HCl
------------------------------	---

General Info

Function	Neuronal phosphoprotein that coats synaptic vesicles, binds to the cytoskeleton, and is believed to function in the regulation of neurotransmitter release. The complex formed with NOS1 and CAPON proteins is necessary for specific nitric-oxid functions at a presynaptic level.
Involvement in disease	Defects in SYN1 are a cause of epilepsy X-linked with variable learning disabilities and behavior disorders [MIM:300491]. XELBD is characterized by variable combinations of epilepsy, learning difficulties, macrocephaly, and aggressive behavior.
Sequence similarities	Belongs to the synapsin family.
Post-translational modifications	Substrate of at least four different protein kinases. It is probable that phosphorylation plays a role in the regulation of synapsin-1 in the nerve terminal. Phosphorylated upon DNA damage, probably by ATM or ATR.
Cellular localization	Cell junction > synapse. Golgi apparatus.

Images



12.5% SDS-PAGE stained with Coomassie Blue.

Western blot - Recombinant Human Synapsin I protein (ab152720)

Please note: All products are "FOR RESEARCH USE ONLY. NOT FOR USE IN DIAGNOSTIC PROCEDURES"

Our Abpromise to you: Quality guaranteed and expert technical support

- Replacement or refund for products not performing as stated on the datasheet
- Valid for 12 months from date of delivery
- Response to your inquiry within 24 hours
- We provide support in Chinese, English, French, German, Japanese and Spanish
- Extensive multi-media technical resources to help you
- We investigate all quality concerns to ensure our products perform to the highest standards

If the product does not perform as described on this datasheet, we will offer a refund or replacement. For full details of the Abpromise, please visit <https://www.abcam.com/abpromise> or contact our technical team.

Terms and conditions

- Guarantee only valid for products bought direct from Abcam or one of our authorized distributors