

## Product datasheet

# Recombinant Human T-bet / Tbx21 protein ab153315

1 Image

### Overview

|                       |   |
|-----------------------|---|
| <b>Product name</b>   | Recombinant Human T-bet / Tbx21 protein |
| <b>Protein length</b> | Protein fragment                        |

### Description

|                            |  |
|----------------------------|--|
| <b>Nature</b>              | Recombinant  |
| <b>Source</b>              | Wheat germ   |
| <b>Amino Acid Sequence</b> |  |
| <b>Species</b>             | Human  |
| <b>Sequence</b>            | LGAPRDHSYEAEFRAVSMKPAFLPSAPGPTMSYYRG<br>QEVLAPGAGWPVAP<br>QYPPKMGPASWFRPMRTLPMEPGPGGSEGRGPEDQ<br>GPPLVWTEIAPIRPE |
| <b>Amino acids</b>         | 387 to 486   |
| <b>Tags</b>                | proprietary tag N-Terminus   |

### Specifications

Our [Abpromise guarantee](#) covers the use of **ab153315** in the following tested applications.

The application notes include recommended starting dilutions; optimal dilutions/concentrations should be determined by the end user.

|                         |  |
|-------------------------|--|
| <b>Applications</b>     | ELISA<br>Western blot                                  |
| <b>Form</b>             | Liquid   |
| <b>Additional notes</b> | Protein concentration is above or equal to 0.05 mg/ml. |

### Preparation and Storage

|                              |  |
|------------------------------|--|
| <b>Stability and Storage</b> | Shipped on dry ice. Upon delivery aliquot and store at -80°C. Avoid freeze / thaw cycles.<br>pH: 8.00<br>Constituents: 0.31% Glutathione, 0.79% Tris HCl |
|------------------------------|--|

## General Info

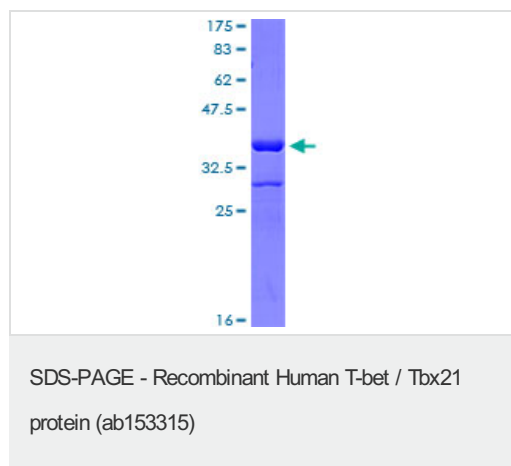
---

|                               |  |
|-------------------------------|--|
| <b>Function</b>               | Transcription factor that controls the expression of the TH1 cytokine, interferon-gamma. Initiates TH1 lineage development from naive TH precursor cells both by activating TH1 genetic programs and by repressing the opposing TH2 programs.  |
| <b>Tissue specificity</b>     | T-cell specific.   |
| <b>Involvement in disease</b> | Genetic variations in TBX21 are associated with susceptibility to asthma with nasal polyps and aspirin intolerance (ANPAI) [MIM:208550]. A condition consisting of asthma, aspirin sensitivity and nasal polyposis. Nasal polyposis is due to chronic inflammation of the paranasal sinus mucosa, leading to protrusion of edematous polyps into the nasal cavities. |
| <b>Sequence similarities</b>  | Contains 1 T-box DNA-binding domain.   |
| <b>Cellular localization</b>  | Nucleus.   |

---

## Images

---



ab153315 on a 12.5% SDS-PAGE stained with Coomassie Blue.

**Please note:** All products are "FOR RESEARCH USE ONLY AND ARE NOT INTENDED FOR DIAGNOSTIC OR THERAPEUTIC USE"

## Our Abpromise to you: Quality guaranteed and expert technical support

---

- Replacement or refund for products not performing as stated on the datasheet
- Valid for 12 months from date of delivery
- Response to your inquiry within 24 hours
- We provide support in Chinese, English, French, German, Japanese and Spanish
- Extensive multi-media technical resources to help you
- We investigate all quality concerns to ensure our products perform to the highest standards

If the product does not perform as described on this datasheet, we will offer a refund or replacement. For full details of the Abpromise, please visit <https://www.abcam.com/abpromise> or contact our technical team.

## Terms and conditions

---

- Guarantee only valid for products bought direct from Abcam or one of our authorized distributors