

Product datasheet

Recombinant human TAK1 + TAB1 protein ab89692

5 Images

Description

Product name	Recombinant human TAK1 + TAB1 protein
Biological activity	The Specific activity of ab89692 was determined to be 10 nmol/min/mg.
Expression system	Baculovirus infected Sf9 cells
Protein length	Protein fragment
Animal free	No
Nature	Recombinant
Species	Human

Specifications

Our [Abpromise guarantee](#) covers the use of **ab89692** in the following tested applications.

The application notes include recommended starting dilutions; optimal dilutions/concentrations should be determined by the end user.

Applications	SDS-PAGE Western blot Functional Studies
Form	Liquid
Additional notes	ab64311 (Myelin Basic Protein protein) can be utilized as a substrate for assessing kinase activity

Preparation and Storage

Stability and Storage	Shipped on dry ice. Upon delivery aliquot and store at -80°C. Avoid freeze / thaw cycles. pH: 7.50 Constituents: 0.0038% EGTA, 0.00174% PMSF, 0.00385% DTT, 0.79% Tris HCl, 0.00292% EDTA, 25% Glycerol (glycerin, glycerine), 0.87% Sodium chloride This product is an active protein and may elicit a biological response in vivo, handle with caution.
------------------------------	--

General Info

Function	May be an important signaling intermediate between TGFB receptors and MAP3K7/TAK1. May
-----------------	--

play an important role in mammalian embryogenesis.

Tissue specificity

Ubiquitous.

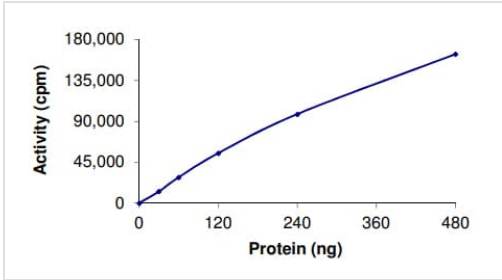
Sequence similarities

Contains 1 PP2C-like domain.

Post-translational modifications

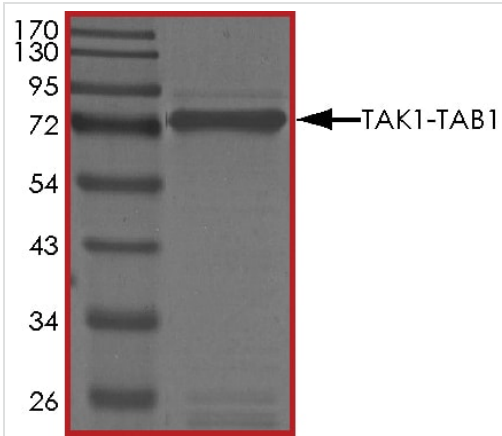
Monoubiquitinated. Deubiquitinated by *Y. enterocolitica* YopP.

Images



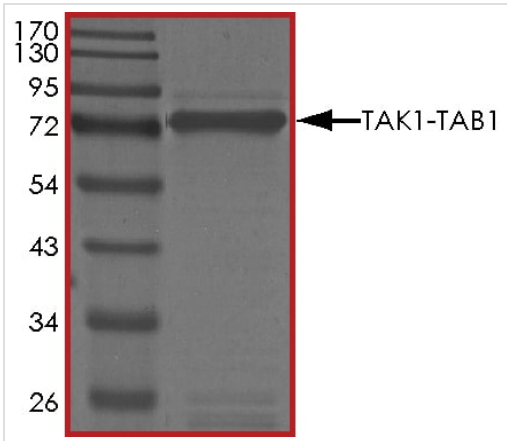
The specific activity of TAK1 + TAB1 (ab89692) was determined to be 12 nmol/min/mg as per activity assay protocol

Functional Studies - Recombinant human TAK1 + TAB1 protein (ab89692)



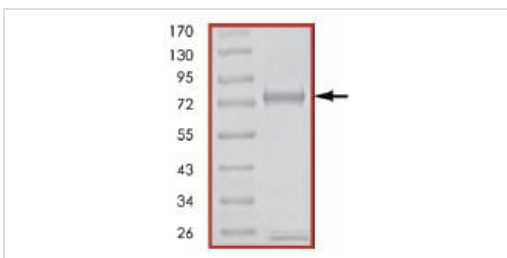
SDS PAGE analysis of ab89692

SDS-PAGE - Recombinant human TAK1 + TAB1 protein (ab89692)



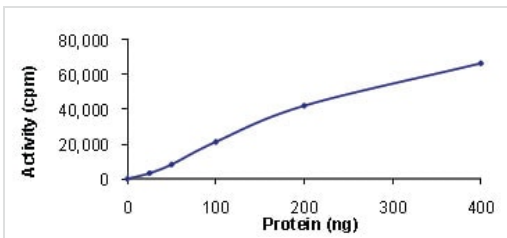
SDS PAGE analysis of ab89692

SDS-PAGE - Recombinant human TAK1 + TAB1 protein (ab89692)



SDS-PAGE showing ab89692 at approximately 74kDa.

SDS-PAGE - Recombinant human TAK1 + TAB1 protein (ab89692)



Kinase Assay demonstrating specific activity of ab89692.

Functional Studies - Recombinant human TAK1 + TAB1 protein (ab89692)

Please note: All products are "FOR RESEARCH USE ONLY. NOT FOR USE IN DIAGNOSTIC PROCEDURES"

Our Abpromise to you: Quality guaranteed and expert technical support

- Replacement or refund for products not performing as stated on the datasheet
- Valid for 12 months from date of delivery
- Response to your inquiry within 24 hours
- We provide support in Chinese, English, French, German, Japanese and Spanish
- Extensive multi-media technical resources to help you
- We investigate all quality concerns to ensure our products perform to the highest standards

If the product does not perform as described on this datasheet, we will offer a refund or replacement. For full details of the Abpromise, please visit <https://www.abcam.com/abpromise> or contact our technical team.

Terms and conditions

- Guarantee only valid for products bought direct from Abcam or one of our authorized distributors