

Product datasheet

Recombinant Human TAPP-1 protein ab163705

1 Image

Description

<b>Product name</b>	Recombinant Human TAPP-1 protein
<b>Expression system</b>	Wheat germ
<b>Protein length</b>	Full length protein
<b>Animal free</b>	No
<b>Nature</b>	Recombinant
<b>Species</b>	Human
<b>Sequence</b>	<pre> MPYVDRQNRICGFLDIEENENSGKFLRRYFILDTRDSF VWYMDNPQNL SGSSRVGAIKLTYSKVS DATKLRPKAEFCFVMNAGMR KYFLQANDQQDL VEWVNVLNKAIKITVPKQSDSQPNSDNL SRHGECGKK QVSYRTDIVGGVP IITPTQKEEVNECGESIDRN NLKRSQSHLPYFTP KPPQD SAVIKAGYCVK QGAVMKNWKRRYFQLDENTIGYFKSELEKEPLRVIPLK EVHKVQECKQSD IMMRDNLFEVTTSRTFVQADSPEEMHSWIKAVSGAM AQRGPGRSASS EHPPGPSESKHAFRPTNAATATSHSTASRSNSLVSTF TMEKRGFYESLAK VKPGNFKVQTVSPREPASKVTEQALLRPQSKNGPQE KDCDLVLDLDDASLP VSDV </pre>
<b>Amino acids</b>	1 to 404
<b>Tags</b>	GST tag N-Terminus

Specifications

Our [Abpromise guarantee](#) covers the use of **ab163705** in the following tested applications. The application notes include recommended starting dilutions; optimal dilutions/concentrations should be determined by the end user.

<b>Applications</b>	Western blot ELISA
<b>Form</b>	Liquid

## Additional notes

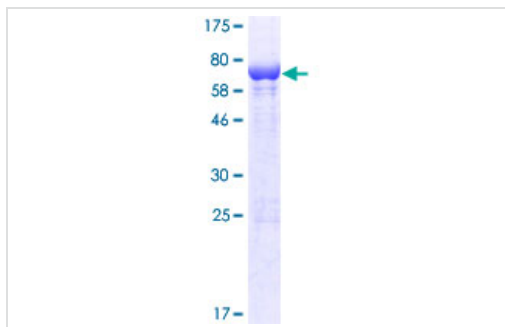
## Preparation and Storage

<b>Stability and Storage</b>	Shipped on dry ice. Upon delivery aliquot and store at -80°C. Avoid freeze / thaw cycles. pH: 8.00 Constituents: 0.31% Glutathione, 0.79% Tris HCl
------------------------------	--

## General Info

<b>Function</b>	Binds specifically to phosphatidylinositol 3,4-diphosphate (PtdIns3,4P2), but not to other phosphoinositides. May recruit other proteins to the plasma membrane.
<b>Tissue specificity</b>	Highly expressed in skeletal muscle, thymus, pancreas, placenta and lung. Detected at low levels in brain, heart, peripheral blood leukocytes, testis, ovary, spinal cord, thyroid, kidney, liver, small intestine and colon.
<b>Sequence similarities</b>	Contains 2 PH domains.
<b>Domain</b>	Binds to membranes enriched in PtdIns3,4P2 via the C-terminal PH domain.
<b>Cellular localization</b>	Cytoplasm. Cell membrane. Nucleus. Locates to the plasma membrane after treatments that stimulate the production of PtdIns3,4P2.

## Images



SDS-PAGE - Recombinant Human TAPP-1 protein  
(ab163705)

ab163705 on a 12.5% SDS-PAGE stained with Coomassie Blue.

**Please note:** All products are "FOR RESEARCH USE ONLY. NOT FOR USE IN DIAGNOSTIC PROCEDURES"

## Our Abpromise to you: Quality guaranteed and expert technical support

- Replacement or refund for products not performing as stated on the datasheet
- Valid for 12 months from date of delivery
- Response to your inquiry within 24 hours

- We provide support in Chinese, English, French, German, Japanese and Spanish
- Extensive multi-media technical resources to help you
- We investigate all quality concerns to ensure our products perform to the highest standards

If the product does not perform as described on this datasheet, we will offer a refund or replacement. For full details of the Abpromise, please visit <https://www.abcam.com/abpromise> or contact our technical team.

### **Terms and conditions**

---

- Guarantee only valid for products bought direct from Abcam or one of our authorized distributors