

Product datasheet

Recombinant Human TBC1D22B protein ab163157

1 Image

Overview

<b>Product name</b>	Recombinant Human TBC1D22B protein
<b>Protein length</b>	Full length protein

Description

<b>Nature</b>	Recombinant
<b>Source</b>	Wheat germ
<b>Amino Acid Sequence</b>	
<b>Species</b>	Human

<b>Sequence</b>	<p>MAAENSKQFWKRS AKLP GSIQP VYGAQH PPLDP RLTK          NFIKERSKVNTVP          LKNKKASSFHEFARNTSDAWDIGDDEEEDFSSPSFQT          LNSKVALATAAQV          LENHSLRVPKERSQSTTS DVPANYKVIKSSSDAQLS          RNSSDTCLRNP LH          KQQLPLRP IIP LVARISDQNASGAPPMTVREKTRLEKF          RQLLSSQNTDL          DELRKCSWPGVPREVRPITWRLLSGYLPANTERRKLT          LQRKREEYFGFIE          QYDSRNEEHHQD TYRQIHIDIPRTNPLIPLFQQPLVQEI          FERILFWAI          RHPASGYVQGINDLVTPFFVFLSEYVEEDVENFDVTN          LSQDMLRSIEAD          SFWCMSKLLDGIQDNYTFAQPGIQKKVKALEELVSRID          EQVHNHFRRYEV          EYLQFAFRWMNNLLMRELPLRCTIRLWDTYQSEPEGF          SHFHLVCAAF LI          KWRKEILDEEDFQGLLM LLQNLPTIHWGN EEEIGLLLAE          AYRLKYM FADAP NHYRR</p>
-----------------	--

<b>Amino acids</b>	1 to 505
<b>Tags</b>	proprietary tag N-Terminus

Specifications

Our [Abpromise guarantee](#) covers the use of **ab163157** in the following tested applications.

The application notes include recommended starting dilutions; optimal dilutions/concentrations should be determined by the end user.

<b>Applications</b>	ELISA Western blot
<b>Form</b>	Liquid
<b>Additional notes</b>	Protein concentration is above or equal to 0.05 mg/ml.

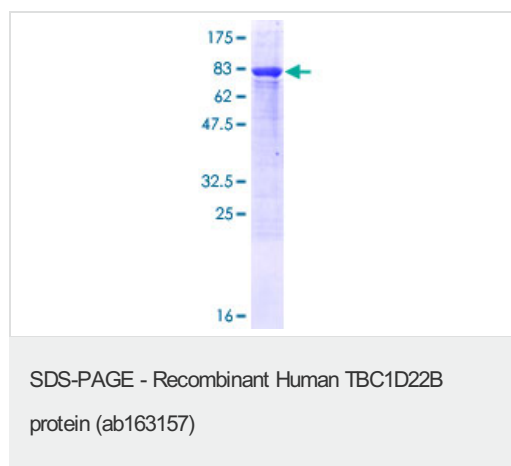
## Preparation and Storage

<b>Stability and Storage</b>	Shipped on dry ice. Upon delivery aliquot and store at -80°C. Avoid freeze / thaw cycles. pH: 8.00 Constituents: 0.31% Glutathione, 0.79% Tris HCl
------------------------------	--

## General Info

<b>Relevance</b>	TBC1D22B may act as a GTPase activating protein for Rab family protein(s).
------------------	--

## Images



ab163157 on a 12.5% SDS-PAGE stained with Coomassie Blue.

**Please note:** All products are "FOR RESEARCH USE ONLY AND ARE NOT INTENDED FOR DIAGNOSTIC OR THERAPEUTIC USE"

## Our Abpromise to you: Quality guaranteed and expert technical support

- Replacement or refund for products not performing as stated on the datasheet
- Valid for 12 months from date of delivery
- Response to your inquiry within 24 hours
- We provide support in Chinese, English, French, German, Japanese and Spanish
- Extensive multi-media technical resources to help you
- We investigate all quality concerns to ensure our products perform to the highest standards

If the product does not perform as described on this datasheet, we will offer a refund or replacement. For full details of the Abpromise,

please visit <https://www.abcam.com/abpromise> or contact our technical team.

## Terms and conditions

---

- Guarantee only valid for products bought direct from Abcam or one of our authorized distributors