

Product datasheet

Recombinant Human Testin protein ab172155

1 Image

Overview

Product name	Recombinant Human Testin protein
Protein length	Full length protein

Description

Nature	Recombinant
Source	Escherichia coli
Amino Acid Sequence	
Accession	Q9UGI8-1
Species	Human

Sequence	<p>MDLENKVKKMGLGHEQGFGAPCLKCKEKCEGFELHF WRKICRNCKCGQEE HDVLLSNEEDRKVVGKLFEDTKYTTLIAKLKSDGIPMYKR NVMILTNPVAA KKNVSINTVTYEWAPPVQNLALRQYMQMLPKEKQPV AGSEGAQYRKKQL AKQLPAHDQDPSKCHELSPREVKEMEQFVKKYKSEA LGVGDVKLPCEMDA QGPKQMNIPGGDRSTPAAVGAMEDKSAEHKRTQYSC YCCKLSMKEGDPAI YAERAGYDKLWHPACFVCSTCHELLVDMYFWKNEKL YCGRHYCDSEKPR CAGCDELIFSNEYTQAENQNWHLKHFCCFDCDSILAG EYVMVNDKPVCK PCYVKNHAVVCQGCHNAIDPEVQRVTYNNFSWHAST ECFLCSCCSKCLIG QKFMPVEGMVFCVVECKKRMS</p>
-----------------	---

Molecular weight	48 kDa
Amino acids	1 to 421
Tags	His tag C-Terminus

Specifications

Our [Abpromise guarantee](#) covers the use of **ab172155** in the following tested applications.

The application notes include recommended starting dilutions; optimal dilutions/concentrations should be determined by the end user.

Applications	SDS-PAGE
Endotoxin level	< 0.100 Eu/ μ g
Purity	>95% by SDS-PAGE .
Form	Lyophilised

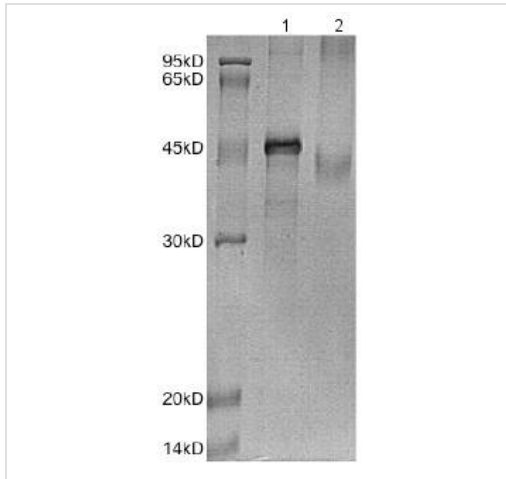
Preparation and Storage

Stability and Storage	Shipped at 4°C. Store at +4°C short term (1-2 weeks). Upon delivery aliquot. Store at -20°C or -80°C. Avoid freeze / thaw cycle. pH: 7.2 Constituents: 0.02% DTT, 0.88% Sodium chloride, 99% PBS
Reconstitution	Always centrifuge tubes before opening. Do not mix by vortex or pipetting. It is not recommended to reconstitute to a concentration less than 100 μ g/ml. Dissolve the lyophilized protein in 1X PBS.

General Info

Function	Scaffold protein that may play a role in cell adhesion, cell spreading and in the reorganization of the actin cytoskeleton. Plays a role in the regulation of cell proliferation. May act as a tumor suppressor. Inhibits tumor cell growth.
Tissue specificity	Ubiquitous.
Sequence similarities	Belongs to the prickle / espinas / testin family. Contains 3 LIM zinc-binding domains. Contains 1 PET domain.
Domain	The N-terminal and the C-terminal halves of the protein can associate with each other, thereby hindering interactions with ZYX.
Cellular localization	Cytoplasm. Cell junction > focal adhesion. Detected along actin stress fibers.

Images



SDS-PAGE analysis of ab172155 under Non reducing (Lane 1) or reducing conditions (Lane 2)

SDS-PAGE - Recombinant Human Testin protein
(ab172155)

Please note: All products are "FOR RESEARCH USE ONLY AND ARE NOT INTENDED FOR DIAGNOSTIC OR THERAPEUTIC USE"

Our Abpromise to you: Quality guaranteed and expert technical support

- Replacement or refund for products not performing as stated on the datasheet
- Valid for 12 months from date of delivery
- Response to your inquiry within 24 hours
- We provide support in Chinese, English, French, German, Japanese and Spanish
- Extensive multi-media technical resources to help you
- We investigate all quality concerns to ensure our products perform to the highest standards

If the product does not perform as described on this datasheet, we will offer a refund or replacement. For full details of the Abpromise, please visit <https://www.abcam.com/abpromise> or contact our technical team.

Terms and conditions

- Guarantee only valid for products bought direct from Abcam or one of our authorized distributors