

## Product datasheet

# Recombinant Human TEX101 protein ab164415

1 Image

### Description

---

<b>Product name</b>	Recombinant Human TEX101 protein
<b>Expression system</b>	Wheat germ
<b>Protein length</b>	Full length protein
<b>Animal free</b>	No
<b>Nature</b>	Recombinant
<b>Species</b>	Human
<b>Sequence</b>	<p>MGAMQIQTSSSQTSPEEAMGTPRIQHLLILLVVGASLLTSG            LELYCQKGL            SMTVEADPANMFNWTTEEVEVETCDKGALCQETILIKAGTET            AILATKGC I            PEGEEAITVQHSSPPGLIVTSYSNYCEDSFCDKDSLSQF            WEFSETTAS            TVSTTLHCPTCVALGTCFSAPSLPCPNGTTRCYQGKLEIT            GGGIESSVEV            KGCTAMIGCRLMSGILAVGPMFVREACPHQLLTQPRKTEN            GATCLPIPVW GLQLLLPLLLPSFIHFS</p>
<b>Amino acids</b>	1 to 267
<b>Tags</b>	GST tag N-Terminus

### Specifications

---

Our [Abpromise guarantee](#) covers the use of **ab164415** in the following tested applications.

The application notes include recommended starting dilutions; optimal dilutions/concentrations should be determined by the end user.

<b>Applications</b>	Western blot
	ELISA
<b>Form</b>	Liquid

**Additional notes**

### Preparation and Storage

---

## Stability and Storage

Shipped on dry ice. Upon delivery aliquot and store at -80°C. Avoid freeze / thaw cycles.

pH: 8.00

Constituents: 0.31% Glutathione, 0.79% Tris HCl

## General Info

---

### Relevance

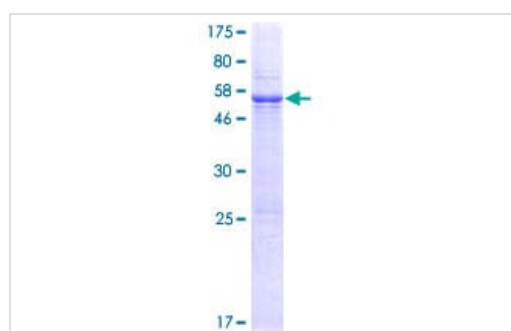
TEX101 may play a role in signal transduction and promote protein tyrosine phosphorylation. It is detected in testis, spermatogonia and blood leukocytes but not detected in spermatocytes. Antibodies against TEX101 are present in sera from patients with scleroderma. There are two isoforms.

### Cellular localization

Cell membrane; Lipid-anchor, GPI-anchor (By similarity). Note=Associated with lipid rafts (By similarity).

## Images

---



ab164415 on a 12.5% SDS-PAGE stained with Coomassie Blue.

SDS-PAGE - Recombinant Human TEX101 protein  
(ab164415)

**Please note:** All products are "FOR RESEARCH USE ONLY. NOT FOR USE IN DIAGNOSTIC PROCEDURES"

## Our Abpromise to you: Quality guaranteed and expert technical support

---

- Replacement or refund for products not performing as stated on the datasheet
- Valid for 12 months from date of delivery
- Response to your inquiry within 24 hours
- We provide support in Chinese, English, French, German, Japanese and Spanish
- Extensive multi-media technical resources to help you
- We investigate all quality concerns to ensure our products perform to the highest standards

If the product does not perform as described on this datasheet, we will offer a refund or replacement. For full details of the Abpromise, please visit <https://www.abcam.com/abpromise> or contact our technical team.

## Terms and conditions

---

- Guarantee only valid for products bought direct from Abcam or one of our authorized distributors