

Product datasheet

Recombinant Human TFAP2D protein ab164436

1 Image

Description

<b>Product name</b>	Recombinant Human TFAP2D protein
<b>Expression system</b>	Wheat germ
<b>Protein length</b>	Full length protein
<b>Animal free</b>	No
<b>Nature</b>	Recombinant
<b>Species</b>	Human
<b>Sequence</b>	<p>MSTTFPGLVHDAEIRHDGSNSYRLMQLGCLESVANST  VAYSSSSPLTYST  TGTEFASPYFSTNHQYTPLHHQSFHYEFQHSHPAVTP  DAYSLNSLHHSQQ  YYQQIHHGEPTDFINLHNARALKSSCLDEQRRELGCLE  AYRRHDLMSH  GSQYGMHPDQRLLPGPSLGLAAAGADDLQGSVEAQC  GLVLNGQGGVIRRG  GTCVVNPTDLFCVPGRLSLLSSTSKYKVTIAEVKRRRL  SPPECLNASLLG  GILRRAKSKNGGRCLREKLDRLGLNLPAGRRKAANVT  LLTSLVEGEALHL  ARDFGYTCETEFPAKAVGEHLARQHMEQKEQTARKK  MILATKQICKEFQD  LLSQDRSPLGSSRPTPILDLDIQRHLTHFSLITHGFGTPA  ICAAALSTFQT  VLSEMLNYLEKHTTHKNGGAADSGQGHANSEKAPLR  KTSEAAVKEGKTEK TD</p>
<b>Amino acids</b>	1 to 452
<b>Tags</b>	GST tag N-Terminus

Specifications

Our [Abpromise guarantee](#) covers the use of **ab164436** in the following tested applications.

The application notes include recommended starting dilutions; optimal dilutions/concentrations should be determined by the end user.

<b>Applications</b>	ELISA
	Western blot

<b>Form</b>	Liquid
<b>Additional notes</b>	Protein concentration is above or equal to 0.05 mg/ml.

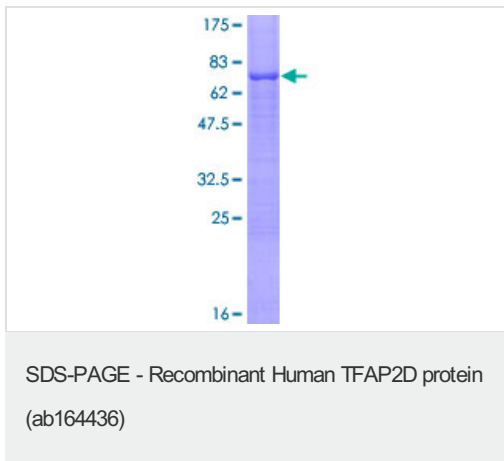
## Preparation and Storage

<b>Stability and Storage</b>	Shipped on dry ice. Upon delivery aliquot and store at -80°C. Avoid freeze / thaw cycles. pH: 8.00 Constituents: 0.31% Glutathione, 0.79% Tris HCl
------------------------------	--

## General Info

<b>Function</b>	Sequence-specific DNA-binding protein that interacts with inducible viral and cellular enhancer elements to regulate transcription of selected genes. AP-2 factors bind to the consensus sequence 5'-GCCNNNGGC-3' and activate genes involved in a large spectrum of important biological functions including proper eye, face, body wall, limb and neural tube development. They also suppress a number of genes including MCAM/MUC18, C/EBP alpha and MYC.
<b>Tissue specificity</b>	Highly expressed in brain, placenta, skeletal muscle, thymus, small intestine, and prostate, and expressed at lower levels in leukocyte, spleen, testis, ovary and colon. Barely detectable in heart, kidney, liver, lung or pancreas.
<b>Sequence similarities</b>	Belongs to the AP-2 family.
<b>Cellular localization</b>	Nucleus.

## Images



ab164436 on a 12.5% SDS-PAGE stained with Coomassie Blue.

**Please note:** All products are "FOR RESEARCH USE ONLY. NOT FOR USE IN DIAGNOSTIC PROCEDURES"

## Our Abpromise to you: Quality guaranteed and expert technical support

- Replacement or refund for products not performing as stated on the datasheet
- Valid for 12 months from date of delivery
- Response to your inquiry within 24 hours

- We provide support in Chinese, English, French, German, Japanese and Spanish
- Extensive multi-media technical resources to help you
- We investigate all quality concerns to ensure our products perform to the highest standards

If the product does not perform as described on this datasheet, we will offer a refund or replacement. For full details of the Abpromise, please visit <https://www.abcam.com/abpromise> or contact our technical team.

### **Terms and conditions**

---

- Guarantee only valid for products bought direct from Abcam or one of our authorized distributors