

Product datasheet

Recombinant human TGF beta 3 protein (Active) ab269205

[2 Images](#)

Description

Product name	Recombinant human TGF beta 3 protein (Active)	
Biological activity	Inhibition of IL-4-induced HT-2 cell proliferation ≤ 1 ng/mL; $\geq 1.0 \times 10^6$ units/mg.	
Purity	> 95 % SDS-PAGE. NULL	
Endotoxin level	< 1.000 Eu/ μ g	
Expression system	Escherichia coli	
Accession	P10600	
Protein length	Full length protein	
Animal free	No	
Nature	Recombinant	
Species	Human	
Sequence	MALDTNYCFR NLEENCCVRP LYDFRQDLG WKWVHEPKGY YANFCSGPCP YLRSADTTHS TVLGLYNTLN PEASASPCCV PQDLEPLTIL YVGRTPKVE QLSNMVKSC KCS	
Predicted molecular weight	26 kDa	
Molecular weight information	ab269205 is a homodimer with a total predicted MW of 25.7 kDa (each monomer is 12.9 kDa).	
Amino acids	301 to 412	
Additional sequence information	Mature chain	

Specifications

Our [Abpromise guarantee](#) covers the use of **ab269205** in the following tested applications.

The application notes include recommended starting dilutions; optimal dilutions/concentrations should be determined by the end user.

Applications	Functional Studies SDS-PAGE
Form	Liquid

Preparation and Storage

Preparation and Storage

Stability and Storage

Shipped at 4°C. Upon delivery aliquot. Store at +4°C.

Constituents: 0.06% Acetic acid, 20% Ethanol

This product is an active protein and may elicit a biological response in vivo, handle with caution.

General Info

Function

Involved in embryogenesis and cell differentiation.

Involvement in disease

Defects in TGFB3 are a cause of familial arrhythmogenic right ventricular dysplasia type 1 (ARVD1) [MIM:107970]; also known as arrhythmogenic right ventricular cardiomyopathy 1 (ARVC1). ARVD is an autosomal dominant disease characterized by partial degeneration of the myocardium of the right ventricle, electrical instability, and sudden death. It is clinically defined by electrocardiographic and angiographic criteria; pathologic findings, replacement of ventricular myocardium with fatty and fibrous elements, preferentially involve the right ventricular free wall.

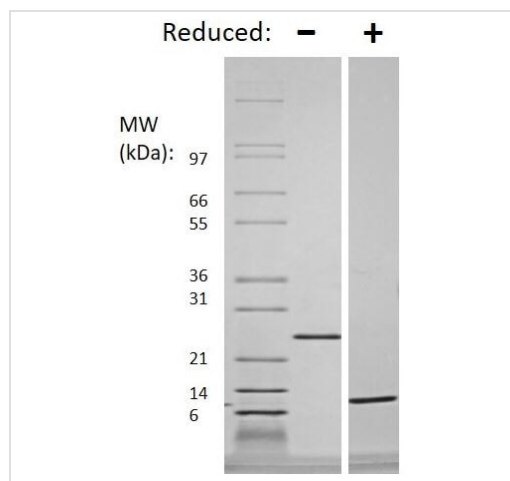
Sequence similarities

Belongs to the TGF-beta family.

Cellular localization

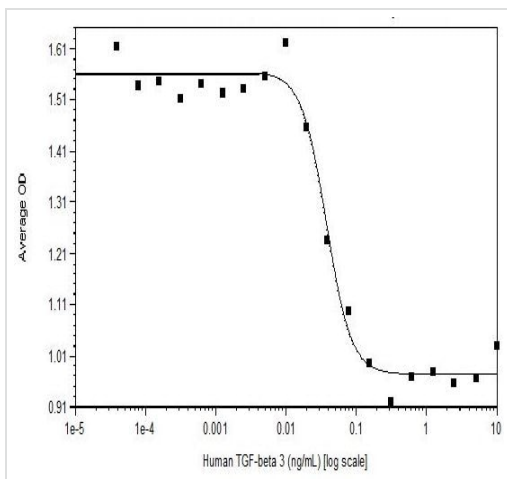
Secreted.

Images



SDS-PAGE analysis of ab269205 at 1ug/lane under (-) non-reducing and (+) reducing conditions. 4-20% Tris glycine gel. Stained with coomassie blue.

SDS-PAGE - Recombinant human TGF beta 3 protein (Active) (ab269205)



Biological activity graph of ab269205

Functional Studies - Recombinant human TGF beta 3 protein (Active) (ab269205)

Please note: All products are "FOR RESEARCH USE ONLY. NOT FOR USE IN DIAGNOSTIC PROCEDURES"

Our Abpromise to you: Quality guaranteed and expert technical support

- Replacement or refund for products not performing as stated on the datasheet
- Valid for 12 months from date of delivery
- Response to your inquiry within 24 hours
- We provide support in Chinese, English, French, German, Japanese and Spanish
- Extensive multi-media technical resources to help you
- We investigate all quality concerns to ensure our products perform to the highest standards

If the product does not perform as described on this datasheet, we will offer a refund or replacement. For full details of the Abpromise, please visit <https://www.abcam.com/abpromise> or contact our technical team.

Terms and conditions

- Guarantee only valid for products bought direct from Abcam or one of our authorized distributors