

Product datasheet

# Recombinant Human Thyrotropin Releasing Hormone (TRH) protein ab159747

1 Image

Description

---

|                          |   |  |
|--------------------------|---|--|
| <b>Product name</b>      | Recombinant Human Thyrotropin Releasing Hormone (TRH) protein   |  |
| <b>Expression system</b> | Wheat germ  |  |
| <b>Protein length</b>    | Full length protein   |  |
| <b>Animal free</b>       | No  |  |
| <b>Nature</b>            | Recombinant   |  |
| <b>Species</b>           | Human   |  |
| <b>Sequence</b>          | MPGPWLLLLALALTLNLTGVPPGGRAPPEAAQQEAVTAAEH<br>PGLDDFLRQVE<br>RLLFLRENIQRLQGDQGEHSASQIFQSDWLSKRQHPGKR<br>EEEEEEGVEEE<br>EEEEEGAVGPHKRQHPGREDEASWSVDVTQHKRQHP<br>GRRSPWLAYAVPK<br>RQHPGRRRLADPKAQRSWEEEEEEEEEREEDLMPEKRQH<br>PGKRALGGPCGPQ<br>GAYGQAGLLLGLLDDLSRSQGAEKQHPGRRAAWVRE<br>PLEE |  |
| <b>Amino acids</b>       | 1 to 242  |  |
| <b>Tags</b>              | GST tag N-Terminus  |  |

Specifications

---

Our [Abpromise guarantee](#) covers the use of **ab159747** in the following tested applications.

The application notes include recommended starting dilutions; optimal dilutions/concentrations should be determined by the end user.

|                     |              |
|---------------------|--------------|
| <b>Applications</b> | ELISA        |
|                     | Western blot |

|             |        |
|-------------|--------|
| <b>Form</b> | Liquid |
|-------------|--------|

Additional notes

Preparation and Storage

## Preparation and Storage

---

### Stability and Storage

Shipped on dry ice. Upon delivery aliquot and store at -80°C. Avoid freeze / thaw cycles.

pH: 8.00

Constituents: 0.31% Glutathione, 0.79% Tris HCl

## General Info

---

### Relevance

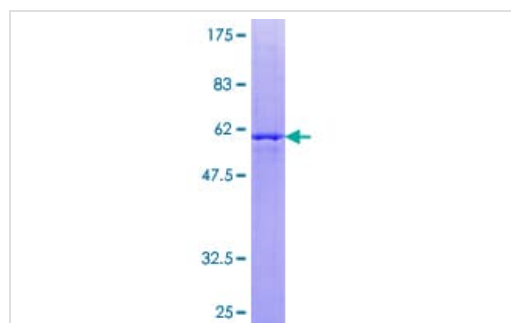
Thyrotropin releasing hormone (TRH) is a tripeptide hormone that stimulates the release of thyroid stimulating hormone and prolactin by the anterior pituitary. TRH is produced by the hypothalamus and travels across the median eminence to the pituitary via the hypophyseal portal system. In addition to the brain, TRH can also be detected in other areas of the body including the gastrointestinal system and pancreatic islets.

### Cellular localization

Secreted

## Images

---



ab159747 on a 12.5% SDS-PAGE stained with Coomassie Blue.

SDS-PAGE - Recombinant Human Thyrotropin  
Releasing Hormone (TRH) protein (ab159747)

**Please note:** All products are "FOR RESEARCH USE ONLY. NOT FOR USE IN DIAGNOSTIC PROCEDURES"

## Our Abpromise to you: Quality guaranteed and expert technical support

---

- Replacement or refund for products not performing as stated on the datasheet
- Valid for 12 months from date of delivery
- Response to your inquiry within 24 hours
- We provide support in Chinese, English, French, German, Japanese and Spanish
- Extensive multi-media technical resources to help you
- We investigate all quality concerns to ensure our products perform to the highest standards

If the product does not perform as described on this datasheet, we will offer a refund or replacement. For full details of the Abpromise, please visit <https://www.abcam.com/abpromise> or contact our technical team.

## Terms and conditions

---

- Guarantee only valid for products bought direct from Abcam or one of our authorized distributors