

Product datasheet

Recombinant Human TIM22 protein ab162269

1 Image

Overview

Product name	Recombinant Human TIM22 protein
Protein length	Full length protein

Description

Nature	Recombinant
Source	Wheat germ
Amino Acid Sequence	
Species	Human
Sequence	<p>MAAAAPNAGGSAPETAGSAEAPLQYSLLLQYLVGDKR QPRLLEPGSLGGI PSPAKSEEQKMIKAMESCAFKAAALACVGGFVLGGA FGVFTAGIDTNVGF DPKDPYRPTAKEVLKDMGQRGMSYAKNFAIVGAMFS CTECLIESYRGTS DWKNSVISGCITGGAIGFRAGLKAGAIGCGGFAAFSAAI DYLR</p>
Amino acids	1 to 194
Tags	GST tag N-Terminus

Specifications

Our [Abpromise guarantee](#) covers the use of **ab162269** in the following tested applications.

The application notes include recommended starting dilutions; optimal dilutions/concentrations should be determined by the end user.

Applications	ELISA Western blot
Form	Liquid
Additional notes	Protein concentration is above or equal to 0.05 mg/ml.

Preparation and Storage

Stability and Storage	Shipped on dry ice. Upon delivery aliquot and store at -80°C. Avoid freeze / thaw cycles.
------------------------------	---

pH: 8.00

Constituents: 0.31% Glutathione, 0.79% Tris HCl

General Info

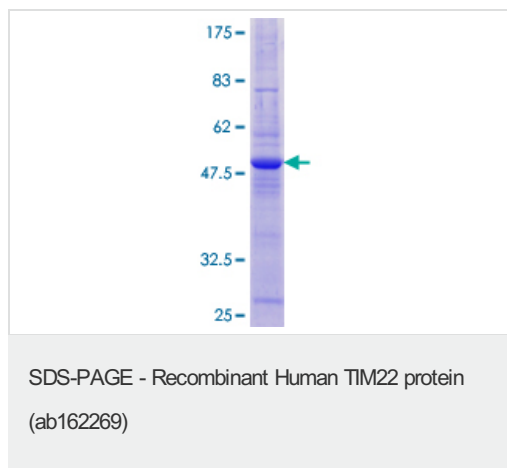
Relevance

TIMM22 is an essential core component of the TIM22 protein insertion complex, a complex that mediates the import and insertion of multi-pass transmembrane proteins into the mitochondrial inner membrane. In the TIM22 complex, it constitutes the voltage-activated, signal-gated hydrophilic high-conductance channel. It forms a twin-pore translocase that uses the membrane potential as an external driving force in 2 voltage-dependent steps.

Cellular localization

Mitochondrion inner membrane; Multi-pass membrane protein.

Images



ab162269 on a 12.5% SDS-PAGE stained with Coomassie Blue.

Please note: All products are "FOR RESEARCH USE ONLY AND ARE NOT INTENDED FOR DIAGNOSTIC OR THERAPEUTIC USE"

Our Abpromise to you: Quality guaranteed and expert technical support

- Replacement or refund for products not performing as stated on the datasheet
- Valid for 12 months from date of delivery
- Response to your inquiry within 24 hours
- We provide support in Chinese, English, French, German, Japanese and Spanish
- Extensive multi-media technical resources to help you
- We investigate all quality concerns to ensure our products perform to the highest standards

If the product does not perform as described on this datasheet, we will offer a refund or replacement. For full details of the Abpromise, please visit <https://www.abcam.com/abpromise> or contact our technical team.

Terms and conditions

- Guarantee only valid for products bought direct from Abcam or one of our authorized distributors