

Product datasheet

Recombinant Human TKTL1/TKR protein ab152845

1 Image

Description

<b>Product name</b>	Recombinant Human TKTL1/TKR protein
<b>Expression system</b>	Wheat germ
<b>Protein length</b>	Full length protein
<b>Animal free</b>	No
<b>Nature</b>	Recombinant
<b>Species</b>	Human
<b>Sequence</b>	<p>MADAEARAEFPPEEARPDRGTLQVFQDMASRLRIHSIRATC            STSSGHPTSC            SSSSEIMSVLFFYMRYKQSDPENPDNDRFVLAKRLSFVD            VATGWLGGQL            GVACGMAYTGKYFDRASYRVFCLMSDGESSEGSVWEAM            AFASYSLDNLV            ATFDVNRLGHSGALPAEHCINIYQRRCEAFGWNTYVVDGR            DVEALCQVFW            QASQVKHKPTAVVAKTFKGRGTPSIEDAESWHAKMPRE            RADAIKLIES            QIQTSRNLDPQPPIEDSPEVNITDVRMTSPDYRVGDKIAT            RKACGLALA            KLGANNRVVLDGDTRYSTFSEIFNKEYPERFIECFMAEQ            NMVSVALGC            ASRGRTIFASTFAAFLTRAFDHIRIGGLAESNINIIGSHCGV            SVGDDGA            SQMALEDIAMFRTIPKCTIFYPTDAVSTEHAVALAANAKGM            CFIRTRPE            TMVIYTPQERFEIGQAKVLRHCVSDKVTVIGAGITVYEALAA            ADELSKQD            IFIRVIDLFTIKPLDVATIVSSAKATEGRIITVEDHYPQGGIGEA            VCAAV            SMDPDIQVHSLAVSGVPQSGKSEELLDMYGISARHIIVAVK            CMLLN</p>
<b>Predicted molecular weight</b>	91 kDa including tags
<b>Amino acids</b>	1 to 596

Specifications

## Specifications

---

Our [Abpromise guarantee](#) covers the use of **ab152845** in the following tested applications.

The application notes include recommended starting dilutions; optimal dilutions/concentrations should be determined by the end user.

<b>Applications</b>	ELISA SDS-PAGE Western blot
<b>Form</b>	Liquid
<b>Additional notes</b>	This product was previously labelled as TKTL1.

## Preparation and Storage

---

<b>Stability and Storage</b>	Shipped on dry ice. Upon delivery aliquot and store at -80°C. Avoid freeze / thaw cycles. pH: 8.00 Constituents: 0.31% Glutathione, 0.79% Tris HCl
------------------------------	--

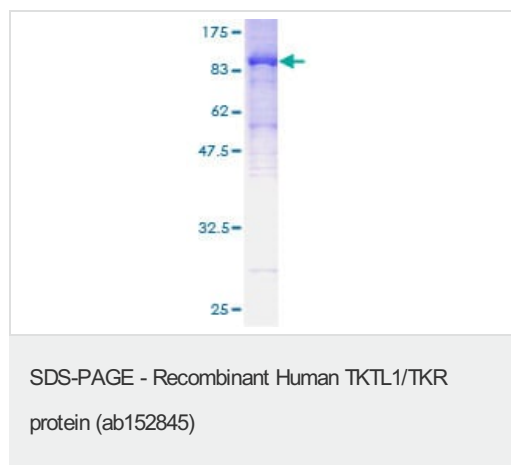
## General Info

---

<b>Tissue specificity</b>	Expressed in fetal and adult heart, brain, lung, liver, and kidney, and in adult placenta, skeletal muscle and pancreas. Up-regulated in various epithelial tumors.
<b>Sequence similarities</b>	Belongs to the transketolase family.
<b>Cellular localization</b>	Cytoplasm. Nucleus. Predominantly cytoplasmic and to a lesser extent also nuclear.

## Images

---



12.5% SDS-PAGE analysis of ab152845 stained with Coomassie Blue.

**Please note:** All products are "FOR RESEARCH USE ONLY. NOT FOR USE IN DIAGNOSTIC PROCEDURES"

## Our Abpromise to you: Quality guaranteed and expert technical support

---

- Replacement or refund for products not performing as stated on the datasheet

- Valid for 12 months from date of delivery
- Response to your inquiry within 24 hours
  
- We provide support in Chinese, English, French, German, Japanese and Spanish
- Extensive multi-media technical resources to help you
- We investigate all quality concerns to ensure our products perform to the highest standards

If the product does not perform as described on this datasheet, we will offer a refund or replacement. For full details of the Abpromise, please visit <https://www.abcam.com/abpromise> or contact our technical team.

### **Terms and conditions**

---

- Guarantee only valid for products bought direct from Abcam or one of our authorized distributors