

Product datasheet

Recombinant Human TLR2 protein (His tag) ab222352

1 Image

Description

Product name	Recombinant Human TLR2 protein (His tag)	
Purity	> 90 % SDS-PAGE. Affinity purified	
Endotoxin level	< 1.000 Eu/μg	
Expression system	Baculovirus infected insect cells	
Accession	O60603	
Protein length	Protein fragment	
Animal free	No	
Nature	Recombinant	
Species	Human	
Sequence	<p>KEESSNQASLSCDRNGICKGSSGSLNSIPSGLTEAVKSLD LSNNRITYIS NSDLQRCVNLQALVLTSGINTIEEDSFSSLGSLHLDLSY NYLSNLSSS WFKPLSSLTFLNLLGNPYKTLGETSLFSLTKLQILRVGNM DTFTKIQRK DFAGLTFLEELEIDASDLQSYEPKSLKSIQNVSHLILHMKQ HILLLEIFV DVTSSVECLELRDLDLDFHFSELSTGETNSLIKKFTFRNV KITDESLFQ VMKLLNQISGLLELEFDDCTLNGVGNFRASDNRVIDPGK VETLTIRRLH IPRFYLFYDLSTLYSLTERVKRITVENSKVFLVPCLLSQHLK SLEYDLS ENLMVEEYLNKNSACEDAWPSLQTLILRQNHLSLEKTGET LLTLKNLTNI DISKNSFHSMPEQCQWPEKMKYLNLSSTRIHSVTGCIPKTL EILDVSNNN LNLFSNLNPQLKELYISRNKLMPLPDASLLPMLLVLKISRNAI TTFSKEQ LDSFHTLKTLEAGGNFICSCEFLSFTQEQQALAKVLIDW PANYLCDSPS HVRGQQVQDVRLSVSECHRTLEHHHHHH</p>	
Predicted molecular weight	66 kDa including tags	

Amino acids	19 to 588
Tags	His tag C-Terminus
Additional sequence information	NP_003255.

Specifications

Our [Abpromise guarantee](#) covers the use of **ab222352** in the following tested applications.

The application notes include recommended starting dilutions; optimal dilutions/concentrations should be determined by the end user.

Applications	SDS-PAGE
Form	Liquid

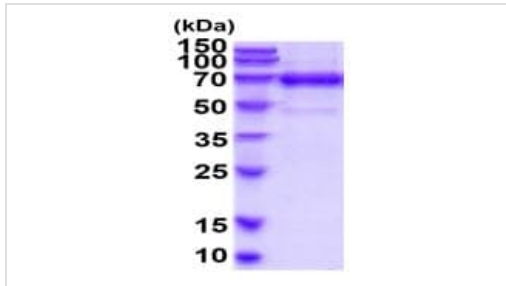
Preparation and Storage

Stability and Storage	Shipped at 4°C. Store at +4°C short term (1-2 weeks). Upon delivery aliquot. Store at -20°C or -80°C. Avoid freeze / thaw cycle. pH: 7.40 Constituents: 10% Glycerol (glycerin, glycerine), PBS
------------------------------	---

General Info

Function	Cooperates with LY96 to mediate the innate immune response to bacterial lipoproteins and other microbial cell wall components. Cooperates with TLR1 to mediate the innate immune response to bacterial lipoproteins or lipopeptides. Acts via MYD88 and TRAF6, leading to NF-kappa-B activation, cytokine secretion and the inflammatory response. May also promote apoptosis in response to lipoproteins. Recognizes mycoplasmal macrophage-activating lipopeptide-2kD (MALP-2), soluble tuberculosis factor (STF), phenol-soluble modulin (PSM) and B.burgdorferi outer surface protein A lipoprotein (OspA-L) cooperatively with TLR6.
Tissue specificity	Highly expressed in peripheral blood leukocytes, in particular in monocytes, in bone marrow, lymph node and in spleen. Also detected in lung and in fetal liver. Levels are low in other tissues.
Sequence similarities	Belongs to the Toll-like receptor family. Contains 14 LRR (leucine-rich) repeats. Contains 1 TIR domain.
Post-translational modifications	Glycosylation of Asn-442 is critical for secretion of the N-terminal ectodomain of TLR2.
Cellular localization	Membrane.

Images



15% SDS-PAGE analysis of 3 µg ab222352.

SDS-PAGE - Recombinant Human TLR2 protein
(His tag) (ab222352)

Please note: All products are "FOR RESEARCH USE ONLY. NOT FOR USE IN DIAGNOSTIC PROCEDURES"

Our Abpromise to you: Quality guaranteed and expert technical support

- Replacement or refund for products not performing as stated on the datasheet
- Valid for 12 months from date of delivery
- Response to your inquiry within 24 hours
- We provide support in Chinese, English, French, German, Japanese and Spanish
- Extensive multi-media technical resources to help you
- We investigate all quality concerns to ensure our products perform to the highest standards

If the product does not perform as described on this datasheet, we will offer a refund or replacement. For full details of the Abpromise, please visit <https://www.abcam.com/abpromise> or contact our technical team.

Terms and conditions

- Guarantee only valid for products bought direct from Abcam or one of our authorized distributors