

Product datasheet

Recombinant Human TMC6 protein ab161415

1 Image

Description

<b>Product name</b>	Recombinant Human TMC6 protein
<b>Expression system</b>	Wheat germ
<b>Protein length</b>	Full length protein
<b>Animal free</b>	No
<b>Nature</b>	Recombinant
<b>Species</b>	Human
<b>Sequence</b>	<p>MAHSFGESYRVGSTSGIHAIIVFCSWDYKVTQKRASRL            QQDNIRTRLKEL            LAEWQLRHSPRSVCGRLRQAAVLGLVWLLCLGTALG            CAVAVHVFSEFMIQ            SPEAAGQEAVLLVLPLVVGLLNLGAPYLCRVLAALEP            HDSPVLEVYVAIC            RNLILKLAILGTLCYHWLGRRVGVLQGCWEDFVGQEL            YRFLVMDFVLMML            LDTLFGELVWRIISEKKLRRRKPEFDIARNVLELIYGQT            LTWLGVLFSF            LLPAVQIIKLLLVFYVKKTSLLANCQAPRRPWLASHMST            VFLTLLCFPAF            LGAAVFLCYAVWQVKPSSTCGPFRTLDTMYEAGRWW            VRHLEAAGPRVSWL            PWVHRYLMENTFFVFLVSALLLAVMLNIQVVRGQRKVI            CLLKEQISNEG            EDKIFLINKLHSIYERKEREERSRVGTTEEAAPPALLT            DEQDA</p>
<b>Amino acids</b>	1 to 444
<b>Tags</b>	GST tag N-Terminus

Specifications

Our [Abpromise guarantee](#) covers the use of **ab161415** in the following tested applications.

The application notes include recommended starting dilutions; optimal dilutions/concentrations should be determined by the end user.

<b>Applications</b>	ELISA
	Western blot

**Form** Liquid

**Additional notes**

**Preparation and Storage**

---

**Stability and Storage** Shipped on dry ice. Upon delivery aliquot and store at -80°C. Avoid freeze / thaw cycles.  
pH: 8.00  
Constituents: 0.31% Glutathione, 0.79% Tris HCl

**General Info**

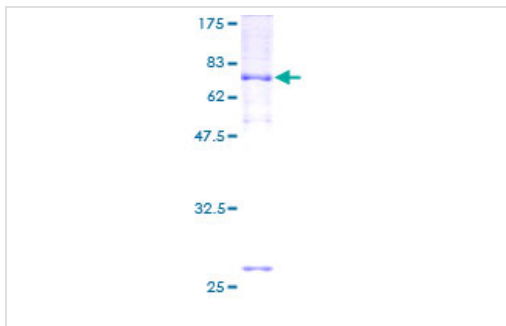
---

**Relevance** Defects in TMC6 are a cause of epidermodysplasia verruciformis, a rare autosomal recessive genodermatosis associated with a high risk of skin carcinoma that results from an abnormal susceptibility to infection by specific human papillomaviruses. Infection leads to persistent wart-like or macular lesions. TMC6 is expressed in placenta, prostate, testis, activated T-lymphocytes and lymphokine-activated killer (LAK) lymphocytes. There are four named isoforms.

**Cellular localization** Endoplasmic reticulum membrane; Multi-pass membrane protein

**Images**

---



ab161415 on a 12.5% SDS-PAGE stained with Coomassie Blue.

SDS-PAGE - Recombinant Human TMC6 protein  
(ab161415)

**Please note:** All products are "FOR RESEARCH USE ONLY. NOT FOR USE IN DIAGNOSTIC PROCEDURES"

**Our Abpromise to you: Quality guaranteed and expert technical support**

---

- Replacement or refund for products not performing as stated on the datasheet
- Valid for 12 months from date of delivery
- Response to your inquiry within 24 hours
- We provide support in Chinese, English, French, German, Japanese and Spanish
- Extensive multi-media technical resources to help you

- We investigate all quality concerns to ensure our products perform to the highest standards

If the product does not perform as described on this datasheet, we will offer a refund or replacement. For full details of the Abpromise, please visit <https://www.abcam.com/abpromise> or contact our technical team.

### **Terms and conditions**

---

- Guarantee only valid for products bought direct from Abcam or one of our authorized distributors