

Product datasheet

Recombinant Human TMC7 protein ab164158

1 Image

Description

<b>Product name</b>	Recombinant Human TMC7 protein
<b>Expression system</b>	Wheat germ
<b>Protein length</b>	Full length protein
<b>Animal free</b>	No
<b>Nature</b>	Recombinant
<b>Species</b>	Human

<b>Sequence</b>	<p>MSESSGSALQPGRPSRQQAVHPENSLDSSCFSSPPVN          FLQELPSYRSIA          RRRTTVHSRDKQSGTLLKPTDSYSSQLEDRIAENLSSHSL          RNYALNISEK          RRLRDIQETQMKYLSEWDQWKRYSSKSWKRFLEKAREM          TTHLELWREDIR          SIEGKFGTGIQSYFSFLRFLVLLNLVIFLIIFMLVLLPVLLTKYK          ITNSS          FVLIPFKDMDKQCTVYPVSSSGLYFYSYIIDLLSGTGFEET          SLFYGHY          TIDEVKFQNFYDLPLAYLLSTIASLALSLLWIVKRSVEGFKI          NLRSEE          HFQSYCNKIFAGWDFCITNRSMADLKHSSLRYELRADLEE          ERMQRKIAER          TSEETIRIYSLRFLNCLAVLGACFYAIYVATVFSQEHEMCK          EIDKMVF          GENLFILYLPSMIVLANFITPMIFAKIIRYEDYSPGFEIRLTILRC          VFM          RLATICVLVFTLGSKITSCDDDTCDLGGYNQKLYPCWETQ          VGQEMYKLMI          FDFIILAVTLFVDFPRKLLVTYCSSCKLIQCWGQQEFAIPD          NVLGMVYG          QTICWIGAFFSPLLPAIATLKFIIIFVYKEWSLLYTCRPSRPF          RASNSN          FFFLLVLLIGLCLAIPLTISIRIPSSKACGPFTNFNTTWEVIP          KTVST          FPSSLQSFHGVITSEAFVPPFFMIICLIMFYFIALAGAHKRVV          IQLREQL SLESRDKCYLIQKLTEAQRDMRN</p>
-----------------	---

<b>Amino acids</b>	1 to 723
<b>Tags</b>	GST tag N-Terminus

## Specifications

---

Our [Abpromise guarantee](#) covers the use of **ab164158** in the following tested applications.

The application notes include recommended starting dilutions; optimal dilutions/concentrations should be determined by the end user.

<b>Applications</b>	Western blot ELISA
<b>Form</b>	Liquid

## Additional notes

## Preparation and Storage

---

<b>Stability and Storage</b>	Shipped on dry ice. Upon delivery aliquot and store at -80°C. Avoid freeze / thaw cycles. pH: 8.00 Constituents: 0.31% Glutathione, 0.79% Tris HCl
------------------------------	--

## General Info

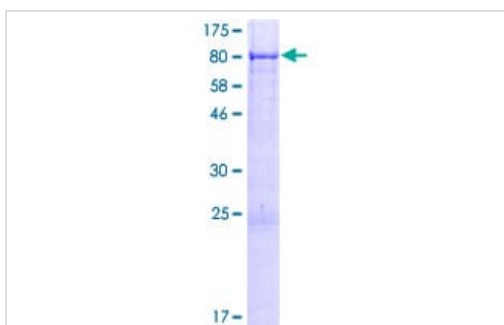
---

<b>Function</b>	Probable ion channel.
<b>Sequence similarities</b>	Belongs to the TMC family.
<b>Cellular localization</b>	Membrane.

---

## Images

---



ab164158 on a 12.5% SDS-PAGE stained with Coomassie Blue.

SDS-PAGE - Recombinant Human TMC7 protein  
(ab164158)

**Please note:** All products are "FOR RESEARCH USE ONLY. NOT FOR USE IN DIAGNOSTIC PROCEDURES"

## **Our Abpromise to you: Quality guaranteed and expert technical support**

---

- Replacement or refund for products not performing as stated on the datasheet
- Valid for 12 months from date of delivery
- Response to your inquiry within 24 hours
  
- We provide support in Chinese, English, French, German, Japanese and Spanish
- Extensive multi-media technical resources to help you
- We investigate all quality concerns to ensure our products perform to the highest standards

If the product does not perform as described on this datasheet, we will offer a refund or replacement. For full details of the Abpromise, please visit <https://www.abcam.com/abpromise> or contact our technical team.

## **Terms and conditions**

---

- Guarantee only valid for products bought direct from Abcam or one of our authorized distributors