

## Product datasheet

# Recombinant Human TMEM149 protein ab156360

1 Image

### Overview

<b>Product name</b>	Recombinant Human TMEM149 protein
<b>Protein length</b>	Protein fragment

### Description

<b>Nature</b>	Recombinant
<b>Source</b>	Escherichia coli
<b>Amino Acid Sequence</b>	
<b>Accession</b>	<a href="#">Q9H665</a>
<b>Species</b>	Human
<b>Sequence</b>	<p>MGSSHHHHHHSSGLVPRGSHMGSSQYCGRLEYWNP            DNKCCSSCLQRFGPP            PCPDYEFRENCGLNDHGDFVTPPFRKCSSGQCNPDG            AELCSPCGGGAVTP            TPAAGGGRTPWRCRERPVPAKGHCPLTPGNPGAPSS            QERSSPASSIAWRT PEPVPQQAWPNFLP</p>
<b>Molecular weight</b>	18 kDa including tags
<b>Amino acids</b>	23 to 163
<b>Tags</b>	His tag N-Terminus

### Specifications

Our [Abpromise guarantee](#) covers the use of **ab156360** in the following tested applications.

The application notes include recommended starting dilutions; optimal dilutions/concentrations should be determined by the end user.

<b>Applications</b>	<p>SDS-PAGE</p> <p>Mass Spectrometry</p>
<b>Mass spectrometry</b>	MALDI-TOF
<b>Purity</b>	<p>&gt;90% by SDS-PAGE.</p> <p>ab156360 was purified using conventional chromatography techniques.</p>
<b>Form</b>	Liquid

## Preparation and Storage

---

### Stability and Storage

Shipped at 4°C. Store at +4°C short term (1-2 weeks). Upon delivery aliquot. Store at -20°C or -80°C. Avoid freeze / thaw cycle.

pH: 7.50

Constituents: 0.03% DTT, 0.32% Tris HCl, 50% Glycerol, 1.17% Sodium chloride

## General Info

---

### Function

Probable cell membrane receptor for the IGF-like family proteins. Binds IGFL1 and IGFL3 with a higher affinity. May also bind IGFL2.

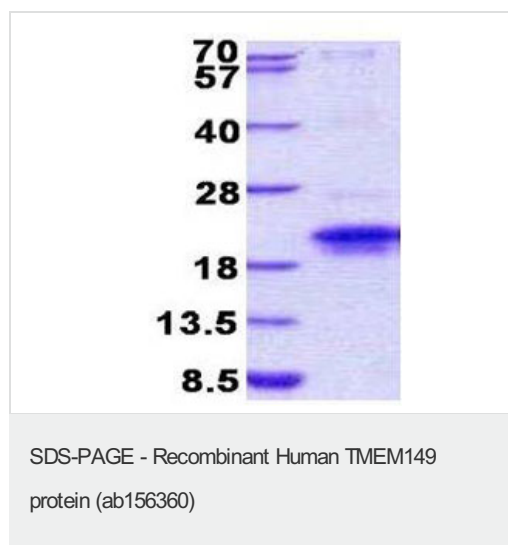
### Cellular localization

Cell membrane.

---

## Images

---



15% SDS-PAGE analysis of 3µg ab156360.

**Please note:** All products are "FOR RESEARCH USE ONLY AND ARE NOT INTENDED FOR DIAGNOSTIC OR THERAPEUTIC USE"

## Our Abpromise to you: Quality guaranteed and expert technical support

---

- Replacement or refund for products not performing as stated on the datasheet
- Valid for 12 months from date of delivery
- Response to your inquiry within 24 hours
- We provide support in Chinese, English, French, German, Japanese and Spanish
- Extensive multi-media technical resources to help you
- We investigate all quality concerns to ensure our products perform to the highest standards

If the product does not perform as described on this datasheet, we will offer a refund or replacement. For full details of the Abpromise, please visit <https://www.abcam.com/abpromise> or contact our technical team.

## Terms and conditions

---

- Guarantee only valid for products bought direct from Abcam or one of our authorized distributors