

Product datasheet

Recombinant Human TMPRSS2 protein ab112364

1 Image

Description

|                                   |   |  |
|-----------------------------------|---|--|
| <b>Product name</b>               | Recombinant Human TMPRSS2 protein   |  |
| <b>Expression system</b>          | Wheat germ  |  |
| <b>Accession</b>                  | <a href="#">O15393</a>  |  |
| <b>Protein length</b>             | Protein fragment  |  |
| <b>Animal free</b>                | No  |  |
| <b>Nature</b>                     | Recombinant   |  |
| <b>Species</b>                    | Human   |  |
| <b>Sequence</b>                   | GWGATEEKGKTSEVLNAAKVLLETQRCNSRYVDNLITPA<br>MICAGFLQG<br>NVDSQCQDSSGGPLVTSKNNIWWLIGDTSWGSGCAKAYR<br>PGVYGNVMVFTD WYRQMRADG |  |
| <b>Predicted molecular weight</b> | 38 kDa including tags   |  |
| <b>Amino acids</b>                | 383 to 492  |  |
| <b>Tags</b>                       | GST tag N-Terminus  |  |

Specifications

Our [Abpromise guarantee](#) covers the use of **ab112364** in the following tested applications.

The application notes include recommended starting dilutions; optimal dilutions/concentrations should be determined by the end user.

|                     |          |
|---------------------|----------|
| <b>Applications</b> | SDS-PAGE |
| <b>Form</b>         | Liquid   |

Preparation and Storage

|                              |  |
|------------------------------|--|
| <b>Stability and Storage</b> | Shipped on dry ice. Upon delivery aliquot and store at -80°C. Avoid freeze / thaw cycles.<br>pH: 8.00<br>Constituents: 0.31% Glutathione, 0.79% Tris HCl |
|------------------------------|--|

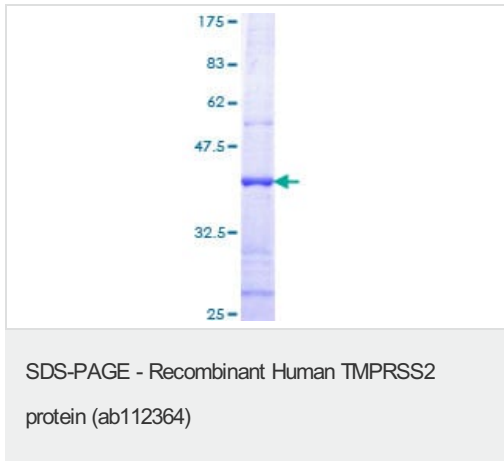
General Info

|                              |  |
|------------------------------|--|
| <b>Tissue specificity</b>    | Expressed strongly in small intestine. Also expressed in prostate, colon, stomach and salivary gland.  |
| <b>Sequence similarities</b> | Belongs to the peptidase S1 family.<br>Contains 1 LDL-receptor class A domain.<br>Contains 1 peptidase S1 domain.<br>Contains 1 SRCR domain. |
| <b>Cellular localization</b> | Cell membrane and Secreted. Activated by cleavage and secreted.  |

---

## Images

---



12.5% SDS-PAGE showing ab112364 at approximately 37.73 kDa, stained with Coomassie Blue.

**Please note:** All products are "FOR RESEARCH USE ONLY. NOT FOR USE IN DIAGNOSTIC PROCEDURES"

## Our Abpromise to you: Quality guaranteed and expert technical support

---

- Replacement or refund for products not performing as stated on the datasheet
- Valid for 12 months from date of delivery
- Response to your inquiry within 24 hours
- We provide support in Chinese, English, French, German, Japanese and Spanish
- Extensive multi-media technical resources to help you
- We investigate all quality concerns to ensure our products perform to the highest standards

If the product does not perform as described on this datasheet, we will offer a refund or replacement. For full details of the Abpromise, please visit <https://www.abcam.com/abpromise> or contact our technical team.

## Terms and conditions

---

- Guarantee only valid for products bought direct from Abcam or one of our authorized distributors