

Product datasheet

Recombinant human Tnk1 protein (Active) ab271770

2 Images

Description

<b>Product name</b>	Recombinant human Tnk1 protein (Active)
<b>Biological activity</b>	Specific Activity: ≥3.5 pmol/min/μg.
<b>Purity</b>	≥ 90 % SDS-PAGE. Affinity purified.
<b>Expression system</b>	Baculovirus infected Sf9 cells
<b>Accession</b>	<a href="#">Q13470</a>
<b>Protein length</b>	Protein fragment
<b>Animal free</b>	No
<b>Nature</b>	Recombinant
<b>Species</b>	Human
<b>Sequence</b>	<p>GLKCL IPEGAVCRGE LLGSGCFGVV HRGLWTLPSG            KSVPVAVKSL RVGPEGPMGT ELGDFLREVS            VMMNLEHPHV LRLHGLVLGQ PLQMVMELAP            LGSLHARLTA PAPTPPLLVA LLCLFLRQLA            GAMAYLGARG LVHRDLATRN LLLASPRTIK            VADFGLRPL GGARGRYVMG GPRPIPYAWC            APESLRHGAF SSASDVWMFG VTLWEMFSGG            EEPWAGVPPY LILQRLEDRA RLPRPPLCSR            ALYSLALRCW APHPADRPSF SHLEGLLQEA            GPSEACCVRD</p>
<b>Predicted molecular weight</b>	57 kDa
<b>Amino acids</b>	106 to 390
<b>Additional sequence information</b>	N-terminal GST-Th-tag.

Specifications

Our [Abpromise guarantee](#) covers the use of **ab271770** in the following tested applications.

The application notes include recommended starting dilutions; optimal dilutions/concentrations should be determined by the end user.

<b>Applications</b>	SDS-PAGE Functional Studies
<b>Form</b>	Liquid

## Preparation and Storage

### Stability and Storage

Shipped on Dry Ice. Store at -80°C. Avoid freeze / thaw cycle.

pH: 8.00

Constituents: 0.63% Tris HCl, 0.64% Sodium chloride, 0.02% Potassium chloride, 0.04% Tween, 20% Glycerol (glycerin, glycerine), 0.28% Glutathione

This product is an active protein and may elicit a biological response in vivo, handle with caution.

## General Info

### Function

Involved in negative regulation of cell growth. Has tumor suppressor properties. Plays a negative regulatory role in the Ras-MAPK pathway. May function in signaling pathways utilized broadly during fetal development and more selectively in adult tissues and in cells of the lymphohematopoietic system. Could specifically be involved in phospholipid signal transduction.

### Tissue specificity

Expressed in all umbilical cord blood, bone marrow and adult blood cell sub-populations and in several leukemia cell lines. Highly expressed in fetal blood, brain, lung, liver and kidney. Detected at lower levels in adult prostate, testis, ovary, small intestine and colon. Not expressed in adult lung, liver, kidney or brain.

### Sequence similarities

Belongs to the protein kinase superfamily. Tyr protein kinase family.

Contains 1 protein kinase domain.

Contains 1 SH3 domain.

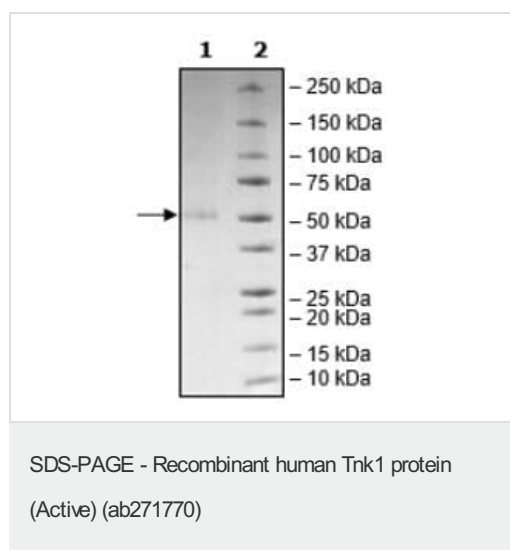
### Post-translational modifications

Autophosphorylated on tyrosine residues.

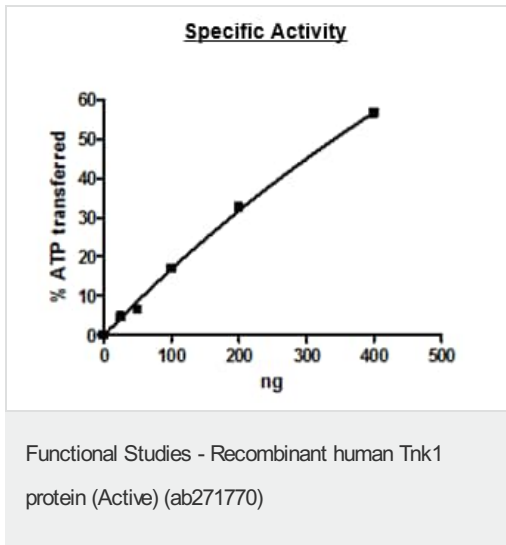
### Cellular localization

Cytoplasm. Membrane.

## Images



SDS-PAGE analysis of ab271770.



Specific activity of ab271770,  $\geq 3.5$  pmol/min/ $\mu$ g.

**Please note:** All products are "FOR RESEARCH USE ONLY. NOT FOR USE IN DIAGNOSTIC PROCEDURES"

### Our Abpromise to you: Quality guaranteed and expert technical support

---

- Replacement or refund for products not performing as stated on the datasheet
- Valid for 12 months from date of delivery
- Response to your inquiry within 24 hours
- We provide support in Chinese, English, French, German, Japanese and Spanish
- Extensive multi-media technical resources to help you
- We investigate all quality concerns to ensure our products perform to the highest standards

If the product does not perform as described on this datasheet, we will offer a refund or replacement. For full details of the Abpromise, please visit <https://www.abcam.com/abpromise> or contact our technical team.

### Terms and conditions

---

- Guarantee only valid for products bought direct from Abcam or one of our authorized distributors