

Product datasheet

# Recombinant Human TRAF6BP/TAX1BP1 protein ab152935

1 Image

Description

|                          |  |
|--------------------------|--|
| <b>Product name</b>      | Recombinant Human TRAF6BP/TAX1BP1 protein  |
| <b>Expression system</b> | Wheat germ   |
| <b>Protein length</b>    | Full length protein  |
| <b>Animal free</b>       | No   |
| <b>Nature</b>            | Recombinant  |
| <b>Species</b>           | Human  |
| <b>Sequence</b>          | <p>MTSFQEVPLQTSNFAHVIFQNVAKSYLPNAHLECHYTLTPY<br/> IHPHPKDWV<br/> GIFKVGWSTARDYYTFLWSPMPEHYVEGSTVNCVLAFQG<br/> YLPNDDGEFY<br/> QFCYVTHKGEIRGASTPFQFRASSPVEELLTMEDEGNSD<br/> MLVVTTKAGLL<br/> ELKIEKTMKEKEELLKLIIVLEKETAQLREQVGRMERELNH<br/> EKERCDQLQ<br/> AEQKGLTEVTQSLKMENEEFKKRFSDATSKAHQLEEDIV<br/> SVTHKAIEKET<br/> ELDSLKDKLKKAQHEREQLECQLKTEKDEKELYKVHLKN<br/> TEIENTKLMSE<br/> VQTLKNIDGNKESVITHFKEEIGRLQLCLAEKENLQRTFLLT<br/> TSSKEDTC<br/> FLKEQLRKAAEQVQATRQEVVFLAKELSDAVNVRDRTMA<br/> DLHTARLENEK<br/> VKKQLADAVAELKLNAMKKDQDKTDTLEHELRRREVEDLK<br/> LRLQMAADHYK<br/> EKFKECQRLQKQINKLSDQSANNNNVFTKKTGNQQKVND<br/> ASVNTDPATSA<br/> STVDVKPSPSAAEADFDIVTKGQVCEMTKEIADKTEKYNK<br/> CKQLLQDEKA<br/> KCNKYADELAKMELKWKEQVKIAENVKLELAEVQDNYKE<br/> LKRSLENPAER<br/> KMEGQNSQSPQCFCSEQNGYVLTLSNAQPVLQYGNPY<br/> ASQETRDGADG<br/> AFYPDEIQRPPVRVPSWGLEDNVVCSQPARNFSRPDGLE</p> |

DSEDSKEDENV  
PTAPDPPSQHLRGGHTGFCFDSSFDVHKKCPLCELMFP  
PNYDQSKFEEHV  
ESHWKVCPMCSEQFPPDYDQQVFERHVQTHFDQNVLNF  
D

**Amino acids** 1 to 789  
**Tags** GST tag N-Terminus

## Specifications

---

Our [Abpromise guarantee](#) covers the use of **ab152935** in the following tested applications.

The application notes include recommended starting dilutions; optimal dilutions/concentrations should be determined by the end user.

**Applications** Western blot  
ELISA  
**Form** Liquid  
**Additional notes** This product was previously labelled as TRAF6BP.

## Preparation and Storage

---

**Stability and Storage** Shipped on dry ice. Upon delivery aliquot and store at -80°C. Avoid freeze / thaw cycles.  
pH: 8.00  
Constituents: 0.31% Glutathione, 0.79% Tris HCl

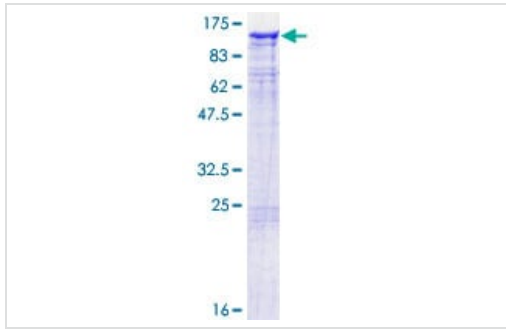
## General Info

---

**Function** Inhibits TNF-induced apoptosis by mediating the TNFAIP3 anti-apoptotic activity. Degraded by caspase-3-like family proteins upon TNF-induced apoptosis. May also play a role in the pro-inflammatory cytokine IL-1 signaling cascade.  
**Tissue specificity** Expressed in all tissues tested.

## Images

---



ab152935 on a 12.5% SDS-PAGE stained with Coomassie Blue.

SDS-PAGE - Recombinant Human  
TRAF6BP/TAX1BP1 protein (ab152935)

**Please note:** All products are "FOR RESEARCH USE ONLY. NOT FOR USE IN DIAGNOSTIC PROCEDURES"

### Our Abpromise to you: Quality guaranteed and expert technical support

---

- Replacement or refund for products not performing as stated on the datasheet
- Valid for 12 months from date of delivery
- Response to your inquiry within 24 hours
  
- We provide support in Chinese, English, French, German, Japanese and Spanish
- Extensive multi-media technical resources to help you
- We investigate all quality concerns to ensure our products perform to the highest standards

If the product does not perform as described on this datasheet, we will offer a refund or replacement. For full details of the Abpromise, please visit <https://www.abcam.com/abpromise> or contact our technical team.

### Terms and conditions

---

- Guarantee only valid for products bought direct from Abcam or one of our authorized distributors