

Product datasheet

Recombinant Human TRAF7 protein ab164530

1 Image

Overview

Product name	Recombinant Human TRAF7 protein
Protein length	Full length protein

Description

Nature	Recombinant
Source	Wheat germ
Amino Acid Sequence	
Species	Human

Sequence	<p>MPPISTPRRSDSAISVRSLSHSESSMSLRSTFSLPEEEEE EPEPLVFAEQPS VKLCCQLCCSVFKDPVITTCGHTFCRRALKSEKCPV DNVKLTVVNNIA VAEQIGELFIHCRHGCRVAGSGKPPIFEVDPRGCPFTIK LSARKDHEGSC DYRPVRCPNPSCPPLLRMNLEAHLKECEHIKCPHSK YGCTFIGNQDTYE THLETCTRFEGLKEFLQQTDDRHEMHHVALAQKDQEIA FLRSMGLKLEKI DQLEKSLELKFVDLDENQSKLSEDLMEFRRDASMLN DELSHINARLNMGI LGSYDPQQIFKCKGTFVGHQGPVWCLCVYSMGDLLF SGSSDKTIKVDTC TTYKCQKTLEGHGMLALCIQGCKLYSGSADCTIIVWDI QNLQKVNTIR AHDNPVCTLVSSHNVLFSGSLKAIKVWDIVGTELKLLK ELTGLNHVVRAL VAAQSYLYSGSYQTIKWDIRTLDCIHVLQTSGGSVYSIA VTNHHVCGT YENLIHVWDIESKEQVRTLTGHVGTVYALAVISTPDQTK VFSASYDRSLR VWSMDNMICTQTLRHHQGSVTALAVSRGRLFSGAVDS TVKVVTC</p>
-----------------	---

Amino acids	1 to 594
--------------------	----------

Tags GST tag N-Terminus

Specifications

Our [Abpromise guarantee](#) covers the use of **ab164530** in the following tested applications.

The application notes include recommended starting dilutions; optimal dilutions/concentrations should be determined by the end user.

Applications	ELISA Western blot
Form	Liquid
Additional notes	Protein concentration is above or equal to 0.05 mg/ml.

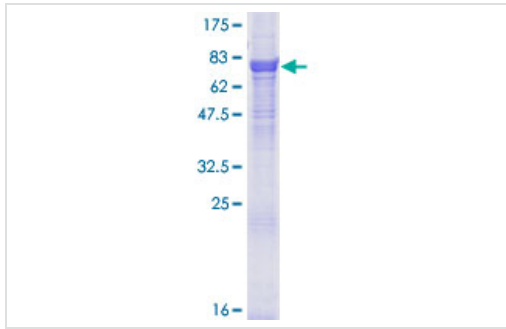
Preparation and Storage

Stability and Storage	Shipped on dry ice. Upon delivery aliquot and store at -80°C. Avoid freeze / thaw cycles. pH: 8.00 Constituents: 0.31% Glutathione, 0.79% Tris HCl
------------------------------	--

General Info

Function	E3 ubiquitin ligase capable of auto-ubiquitination, following phosphorylation by MAP3K3. Potentiates MEKK3-mediated activation of the NF-kappa-B, JUN/AP1 and DDIT3 transcriptional regulators. Induces apoptosis when overexpressed.
Tissue specificity	Ubiquitously expressed with high levels in skeletal muscle, heart, colon, spleen, kidney, liver and placenta.
Pathway	Protein modification; protein ubiquitination.
Sequence similarities	Belongs to the WD repeat TRAF7 family. Contains 1 RING-type zinc finger. Contains 1 TRAF-type zinc finger. Contains 7 WD repeats.
Post-translational modifications	Phosphorylated by MAP3K3. Ubiquitinates itself upon phosphorylation.
Cellular localization	Cytoplasmic vesicle. Colocalizes with MAP3K3 to vesicle-like structures throughout the cytoplasm.

Images



ab164530 on a 12.5% SDS-PAGE stained with Coomassie Blue.

SDS-PAGE - Recombinant Human TRAF7 protein
(ab164530)

Please note: All products are "FOR RESEARCH USE ONLY AND ARE NOT INTENDED FOR DIAGNOSTIC OR THERAPEUTIC USE"

Our Abpromise to you: Quality guaranteed and expert technical support

- Replacement or refund for products not performing as stated on the datasheet
- Valid for 12 months from date of delivery
- Response to your inquiry within 24 hours
- We provide support in Chinese, English, French, German, Japanese and Spanish
- Extensive multi-media technical resources to help you
- We investigate all quality concerns to ensure our products perform to the highest standards

If the product does not perform as described on this datasheet, we will offer a refund or replacement. For full details of the Abpromise, please visit <https://www.abcam.com/abpromise> or contact our technical team.

Terms and conditions

- Guarantee only valid for products bought direct from Abcam or one of our authorized distributors