

Product datasheet

Recombinant Human TRIB3 protein (denatured)
ab202154

1 Image

Description

Product name	Recombinant Human TRIB3 protein (denatured)	
Purity	> 85 % SDS-PAGE. ab202154 was purified by conventional chromatography techniques.	
Expression system	Escherichia coli	
Accession	Q96RU7	
Protein length	Full length protein	
Animal free	No	
Nature	Recombinant	
Species	Human	
Sequence	MGSSHHHHHHSSGLVPRGSHMGSMRATPLAAPAGSLSR KKRELEDDNLDT ERPVQKRARSGPQPRLLPLSPPTAPDRATAVATAS RLGPYVLEPE EGGRAYQALHCPTGTEYTCKVYPVQEALAVLEPYARLPPH KHVARPTEVL AGTQLLYAFFTRTHGDMHSLVRSRHRRIPEPEAAVLFRQMA TALAHCHQH LVLRLDLKLCRFVFAADRERKKLVLENLEDSCVLTGPDDSL WDKHACPAYVG PEILSSRASYSGKAADVWSLGVLFMTLAGHYPFQDSEP VLLFGKIRRG YALPAGLSAPARCLVRCLLRREPAERLTATGILLHPWLRQ DPMP LAPTRS HLWEAAQVVPDGLGLDEAREEEEGDREVVLYG	
Predicted molecular weight	42 kDa including tags	
Amino acids	1 to 358	
Tags	His tag N-Terminus	
Additional sequence information	NP_066981.	
Description	Recombinant Human TRIB3 protein	

Specifications

Specifications

Our [Abpromise guarantee](#) covers the use of **ab202154** in the following tested applications.

The application notes include recommended starting dilutions; optimal dilutions/concentrations should be determined by the end user.

Applications SDS-PAGE

Form Liquid

Preparation and Storage

Stability and Storage Shipped at 4°C. Store at +4°C short term (1-2 weeks). Upon delivery aliquot. Store at -20°C or -80°C. Avoid freeze / thaw cycle.

pH: 8.00

Constituents: 0.32% Tris HCl, 10% Glycerol (glycerin, glycerine)

General Info

Function Disrupts insulin signaling by binding directly to Akt kinases and blocking their activation. May bind directly to and mask the 'Thr-308' phosphorylation site in AKT1. Binds to ATF4 and inhibits its transcriptional activation activity. Interacts with the NF-kappa-B transactivator p65 RELA and inhibits its phosphorylation and thus its transcriptional activation activity. Interacts with MAPK kinases and regulates activation of MAP kinases. May play a role in programmed neuronal cell death but does not appear to affect non-neuronal cells. Does not display kinase activity.

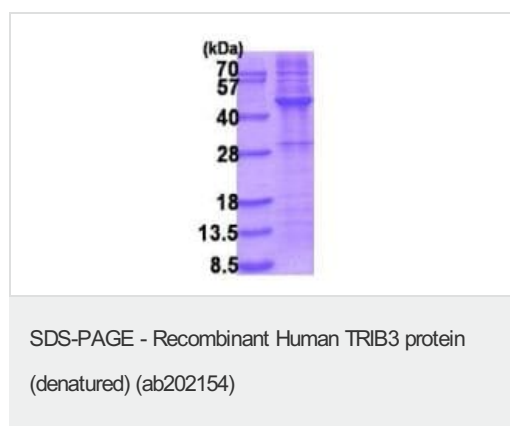
Tissue specificity Highest expression in liver, pancreas, peripheral blood leukocytes and bone marrow. Also highly expressed in a number of primary lung, colon and breast tumors. Expressed in spleen, thymus, and prostate and is undetectable in other examined tissues, including testis, ovary, small intestine, colon, leukocyte, heart, brain, placenta, lung, skeletal muscle, and kidney.

Sequence similarities Belongs to the protein kinase superfamily. CAMK Ser/Thr protein kinase family. Tribbles subfamily.

Contains 1 protein kinase domain.

Cellular localization Nucleus.

Images



15% SDS-PAGE analysis of ab202154 (3µg).

Please note: All products are "FOR RESEARCH USE ONLY. NOT FOR USE IN DIAGNOSTIC PROCEDURES"

Our Abpromise to you: Quality guaranteed and expert technical support

- Replacement or refund for products not performing as stated on the datasheet
- Valid for 12 months from date of delivery
- Response to your inquiry within 24 hours

- We provide support in Chinese, English, French, German, Japanese and Spanish
- Extensive multi-media technical resources to help you
- We investigate all quality concerns to ensure our products perform to the highest standards

If the product does not perform as described on this datasheet, we will offer a refund or replacement. For full details of the Abpromise, please visit <https://www.abcam.com/abpromise> or contact our technical team.

Terms and conditions

- Guarantee only valid for products bought direct from Abcam or one of our authorized distributors