

Product datasheet

Recombinant Human TRIM25/EFP protein ab152814

1 Image

Description

Product name	Recombinant Human TRIM25/EFP protein
Expression system	Wheat germ
Protein length	Full length protein
Animal free	No
Nature	Recombinant
Species	Human
Sequence	<p>MAELCPLAEELSCSICLEPFKEPVTPCGHNFCGSCLNET WAVQGSPYLC PQCRAVYQARQLHKNTVLCNVVEQFLQADLAREPPADV WTPPARASAPS PNAQVACDHCLKEAAVKTCLVCMASFCQEHLQPHFDSP AFQDHPLQPPVR DLLRRKCSQHNRLREFFCPEHSECICHICLVEHKTCSPAS LSQASADLEA TLRHKLTVMYSQINGASRALDDVRNRQQDVRMTANRKVE QLQQEYTEMKA LLDASETSTRKIKEEEKRVNSKFDITYQILLKKKSEIQTKE EIEQSLT KRDEFEFLEKASKLRGISTKPVYIPEVELNHKLIKGIHQSTID LKNELKQ CIGRLQELTPSSGDPGEHDPASTHKSTRPVKKVSKEEKK SKKPPVPALP SKLPTFGAPEQLVDLKQAGLEAAAKATSSHPNSTSLKAK VLETFLAKSRP ELLEYYIKVILDYNTAHNKVALSECYTVASVAEMPQNYRPH PQRFTYCSQ VLGLHCYKKGIIHYWEVELQKNNFCGVGICYGSMNRQGPE SRLGRNSASWC VEWFNTKISAWHNNVEKTL PSTKATRVGVLLNCDHGFVIF FAVADKVHLM YKFRVDFTEALYPAFWVFSAGATLSICSPK</p>
Predicted molecular weight	97 kDa including tags
Amino acids	1 to 630

Specifications

Our [Abpromise guarantee](#) covers the use of **ab152814** in the following tested applications.

The application notes include recommended starting dilutions; optimal dilutions/concentrations should be determined by the end user.

Applications	SDS-PAGE ELISA Western blot
Form	Liquid
Additional notes	This product was previously labelled as TRIM25.

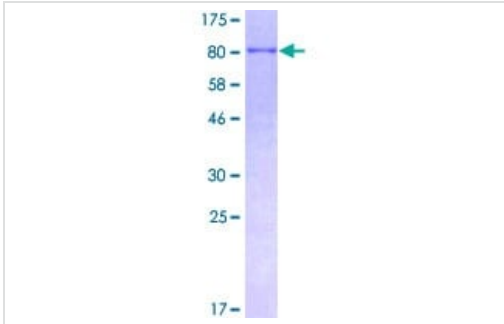
Preparation and Storage

Stability and Storage	Shipped on dry ice. Upon delivery aliquot and store at -80°C. Avoid freeze / thaw cycles. pH: 8.00 Constituents: 0.31% Glutathione, 0.79% Tris HCl
------------------------------	--

General Info

Function	Functions as an ubiquitin E3 ligase and as an ISG15 E3 ligase. Involved in innate immune defense against viruses by mediating ubiquitination of DDX58. Mediates 'Lys-63'-linked polyubiquitination of the DDX58 N-terminal CARD-like region which is crucial for triggering the cytosolic signal transduction that leads to the production of interferons in response to viral infection. Promotes ISGylation of 14-3-3 sigma (SFN), an adapter protein implicated in the regulation of a large spectrum signaling pathway. Mediates estrogen action in various target organs.
Tissue specificity	Ubiquitous.
Pathway	Protein modification; protein ubiquitination.
Sequence similarities	Contains 1 B30.2/SPRY domain. Contains 1 RING-type zinc finger.
Domain	The RING-type zinc finger is important for ISG15 E3 ligase activity and autoISGylation. AutoISGylation negatively regulates ISG15 E3 ligase activity. The C-terminal B30.2/SPRY domain interacts with the first N-terminal CARD domain of DDX58.
Post-translational modifications	Auto-ISGylated.
Cellular localization	Cytoplasm. Colocalized with DDX58 at cytoplasmic perinuclear bodies.

Images



12.5% SDS-PAGE analysis of ab152814 stained with Coomassie Blue.

SDS-PAGE - Recombinant Human TRIM25/EFP protein (ab152814)

Please note: All products are "FOR RESEARCH USE ONLY. NOT FOR USE IN DIAGNOSTIC PROCEDURES"

Our Abpromise to you: Quality guaranteed and expert technical support

- Replacement or refund for products not performing as stated on the datasheet
- Valid for 12 months from date of delivery
- Response to your inquiry within 24 hours
- We provide support in Chinese, English, French, German, Japanese and Spanish
- Extensive multi-media technical resources to help you
- We investigate all quality concerns to ensure our products perform to the highest standards

If the product does not perform as described on this datasheet, we will offer a refund or replacement. For full details of the Abpromise, please visit <https://www.abcam.com/abpromise> or contact our technical team.

Terms and conditions

- Guarantee only valid for products bought direct from Abcam or one of our authorized distributors