

Product datasheet

Recombinant Human TrkB protein ab132927

1 Image

Description

Product name	Recombinant Human TrkB protein	
Expression system	Wheat germ	
Accession	Q16620-2	
Protein length	Full length protein	
Animal free	No	
Nature	Recombinant	
Species	Human	
Sequence	<p>MSSWIRWHGPAMARLWGFCWLVVGFWRAAFACPTSCK CSASRIWCSDPSP GVAFPRLEPNSVDPENITEIFIANQKRLEIINEDDVEAYVGL RNLTMD SGLKFVAHKAFLKNSNLQHINFTRNKLTSLSRKHFRHLDLS ELILVGNPF TCSCDIMWIKTLQEAKSSPDTQDLYCLNESSKNIPLANLQI PNCGLPSAN LAAPNLVVEEGKSITLSCSVAGDPVPMYWDVGNLVSKH MNETSHTQGSL RITNISSDDSGKQISCAENLVGEDQDSVNLTVHFAPTITFL ESPTSDHH WCIPFTVKGNPKPALQWFYNGAILNESKYICTKIHVTNHTEY HGCLQLDN PTHMNGDYTLIAKNEYGKDEKQISAHFMGWPGIDDGANP NYPDVIYEDY GTAANDIGDTTNRSNEIPSTDVTDKGTGREHLSVYAVVVIAS VVGFCLLVM LFLCLKLARHSKFGMKGFVLFHKIPLDG</p>	
Predicted molecular weight	78 kDa including tags	
Amino acids	1 to 477	

Specifications

Our [Abpromise guarantee](#) covers the use of **ab132927** in the following tested applications.

The application notes include recommended starting dilutions; optimal dilutions/concentrations should be determined by the end user.

Applications	SDS-PAGE
---------------------	----------

	ELISA
	Western blot
Form	Liquid

Preparation and Storage

Stability and Storage	Shipped on dry ice. Upon delivery aliquot and store at -80°C. Avoid freeze / thaw cycles. pH: 8.00 Constituents: 0.31% Glutathione, 0.79% Tris HCl
------------------------------	--

General Info

Function	Receptor for brain-derived neurotrophic factor (BDNF), neurotrophin-3 and neurotrophin-4/5 but not nerve growth factor (NGF). Involved in the development and/or maintenance of the nervous system. This is a tyrosine-protein kinase receptor. Known substrates for the TRK receptors are SHC1, PI-3 kinase, and PLC-gamma-1.
-----------------	--

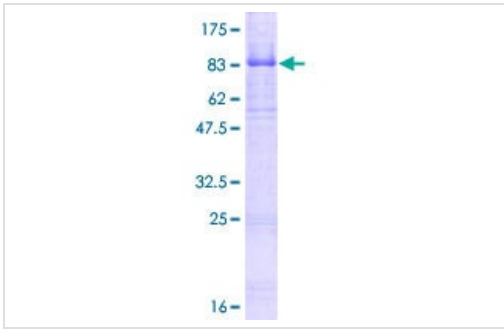
Tissue specificity	Isoform TrkB is widely expressed, mainly in the nervous tissue. In the CNS, expression is observed in the cerebral cortex, hippocampus, thalamus, choroid plexus, granular layer of the cerebellum, brain stem, and spinal cord. In the peripheral nervous system, it is expressed in many cranial ganglia, the ophthalmic nerve, the vestibular system, multiple facial structures, the submaxillary glands, and dorsal root ganglia. Isoform TrkB-T1 is expressed in multiple tissues, mainly in brain, pancreas, kidney and heart. Isoform TrkB-T-Shc is predominantly expressed in brain.
---------------------------	---

Sequence similarities	Belongs to the protein kinase superfamily. Tyr protein kinase family. Insulin receptor subfamily. Contains 2 Ig-like C2-type (immunoglobulin-like) domains. Contains 2 LRR (leucine-rich) repeats. Contains 1 LRRCT domain. Contains 1 LRRNT domain. Contains 1 protein kinase domain.
------------------------------	--

Post-translational modifications	Ligand-mediated auto-phosphorylation.
---	---------------------------------------

Cellular localization	Membrane.
------------------------------	-----------

Images



12.5% SDS-PAGE analysis of ab132927, stained with Coomassie Blue.

SDS-PAGE - Recombinant Human TrkB protein
(ab132927)

Please note: All products are "FOR RESEARCH USE ONLY. NOT FOR USE IN DIAGNOSTIC PROCEDURES"

Our Abpromise to you: Quality guaranteed and expert technical support

- Replacement or refund for products not performing as stated on the datasheet
- Valid for 12 months from date of delivery
- Response to your inquiry within 24 hours
- We provide support in Chinese, English, French, German, Japanese and Spanish
- Extensive multi-media technical resources to help you
- We investigate all quality concerns to ensure our products perform to the highest standards

If the product does not perform as described on this datasheet, we will offer a refund or replacement. For full details of the Abpromise, please visit <https://www.abcam.com/abpromise> or contact our technical team.

Terms and conditions

- Guarantee only valid for products bought direct from Abcam or one of our authorized distributors