

Product datasheet

Recombinant Human Tropomodulin 2 protein  
ab162233

1 Image

Overview

|                       |  |
|-----------------------|--|
| <b>Product name</b>   | Recombinant Human Tropomodulin 2 protein |
| <b>Protein length</b> | Full length protein                      |

Description

|                            |   |
|----------------------------|---|
| <b>Nature</b>              | Recombinant   |
| <b>Source</b>              | Wheat germ  |
| <b>Amino Acid Sequence</b> |   |
| <b>Species</b>             | Human   |
| <b>Sequence</b>            | <p>MALPFQKELEKYKNIDEDELLGKLSEEEELKQLENVLDD<br/>         LDPESAMLPAGF<br/>         RQKDQTQKAATGPFDRHLLMYLEKEALEQKDREDF<br/>         VPFTGEKKGRVFIP<br/>         KEKPIETRKEEKVTLDPLEEEALASASDTELYDLAAVL<br/>         GVHLLNPNPKFD<br/>         EETANNKGGKGPVRNVKGEKVKPVFEPPNPTNVEI<br/>         SLQQMKANDPSLQ<br/>         EVNLNNIKNIPIPTLREFAKALETNTHVKKFSLAATRSND<br/>         PVAIAFADML<br/>         KVNKTLTSLNIESNFITGTGILALVEALKENDTLTETKIDN<br/>         QRQQLGTAV<br/>         EMEIAQMLEENSRIKFGYQFTKQGPRTVAAAITKNN<br/>         DLVRKKRVEADR R</p> |
| <b>Amino acids</b>         | 1 to 351  |
| <b>Tags</b>                | proprietary tag N-Terminus  |

Specifications

Our [Abpromise guarantee](#) covers the use of **ab162233** in the following tested applications.  
 The application notes include recommended starting dilutions; optimal dilutions/concentrations should be determined by the end user.

|                     |              |
|---------------------|--------------|
| <b>Applications</b> | ELISA        |
|                     | Western blot |

|                         |  |
|-------------------------|--|
| <b>Form</b>             | Liquid   |
| <b>Additional notes</b> | Protein concentration is above or equal to 0.05 mg/ml. |

## Preparation and Storage

---

|                              |  |
|------------------------------|--|
| <b>Stability and Storage</b> | Shipped on dry ice. Upon delivery aliquot and store at -80°C. Avoid freeze / thaw cycles.<br>pH: 8.00<br>Constituents: 0.31% Glutathione, 0.79% Tris HCl |
|------------------------------|--|

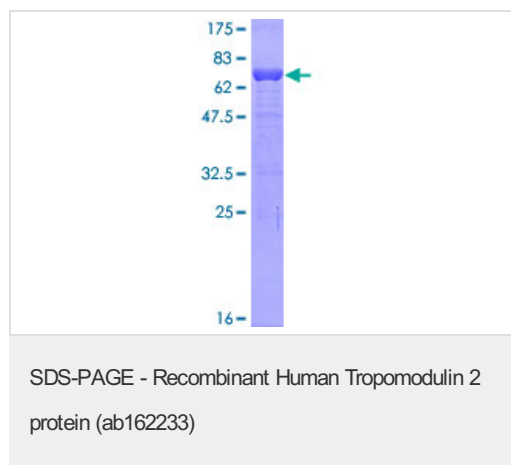
## General Info

---

|                              |  |
|------------------------------|--|
| <b>Relevance</b>             | Tropomodulin is the actin-capping protein for the slow growing end of filamentous actin. Tropomodulin 2 is a neuronal specific isoform which is the major binding protein to brain tropomyosin in rat. |
| <b>Cellular localization</b> | Cytoplasm; cytoskeleton  |

## Images

---



ab162233 on a 12.5% SDS-PAGE stained with Coomassie Blue.

**Please note:** All products are "FOR RESEARCH USE ONLY AND ARE NOT INTENDED FOR DIAGNOSTIC OR THERAPEUTIC USE"

## Our Abpromise to you: Quality guaranteed and expert technical support

---

- Replacement or refund for products not performing as stated on the datasheet
- Valid for 12 months from date of delivery
- Response to your inquiry within 24 hours
- We provide support in Chinese, English, French, German, Japanese and Spanish
- Extensive multi-media technical resources to help you
- We investigate all quality concerns to ensure our products perform to the highest standards

If the product does not perform as described on this datasheet, we will offer a refund or replacement. For full details of the Abpromise, please visit <https://www.abcam.com/abpromise> or contact our technical team.

## Terms and conditions

---

- Guarantee only valid for products bought direct from Abcam or one of our authorized distributors