

Product datasheet

Recombinant Human TSSK1 protein ab164470

1 Image

Description

<b>Product name</b>	Recombinant Human TSSK1 protein	
<b>Expression system</b>	Wheat germ	
<b>Protein length</b>	Full length protein	
<b>Animal free</b>	No	
<b>Nature</b>	Recombinant	
<b>Species</b>	Human	
<b>Sequence</b>	MDAAVLKRRGYLLGINLGEFSYAKVKSAYSERLKFN VAIKIIDRKKAPA DFLEKFLPREIEILAMLNHCSIKTIEIFETSHGKVYVMEL AVQGDLE LIKTRGALHEDEARKKFHQLSLAIKYCHDLDVVHRDLK CDNLLLDKDFNI KLSDFSFSKRCLRDDSGRMALSKTFCGSPAYAAPEV LQGIPYQPKVYDIW SLGVILYIMVCGSMPYDDSNIKKMLRIQKEHRVNFPRSK HLTGECKDLIY HMLQPDVNRRLHIDEILSHCWMQPKARGSPSVAINKE GESSRGTEPLWTP EPGSDKKSATKLEPEGEAQPQAQPETKPEGTAMQMS RQSEILGFPSKPST METEEGPPQPPETRAQ	
<b>Amino acids</b>	1 to 367	
<b>Tags</b>	GST tag N-Terminus	

Specifications

Our [Abpromise guarantee](#) covers the use of **ab164470** in the following tested applications.

The application notes include recommended starting dilutions; optimal dilutions/concentrations should be determined by the end user.

<b>Applications</b>	ELISA
	Western blot
<b>Form</b>	Liquid
<b>Additional notes</b>	Protein concentration is above or equal to 0.05 mg/ml.

## Preparation and Storage

---

### Stability and Storage

Shipped on dry ice. Upon delivery aliquot and store at -80°C. Avoid freeze / thaw cycles.

pH: 8.00

Constituents: 0.31% Glutathione, 0.79% Tris HCl

## General Info

---

### Function

Testis-specific serine/threonine-protein kinase required during spermatid development. Phosphorylates 'Ser-288' of TSKS. Involved in the late stages of spermatogenesis, during the reconstruction of the cytoplasm. During spermatogenesis, required for the transformation of a ring-shaped structure around the base of the flagellum originating from the chromatoid body.

### Tissue specificity

Testis-specific. Present in sperm (at protein level).

### Sequence similarities

Belongs to the protein kinase superfamily. CAMK Ser/Thr protein kinase family. Contains 1 protein kinase domain.

### Post-translational modifications

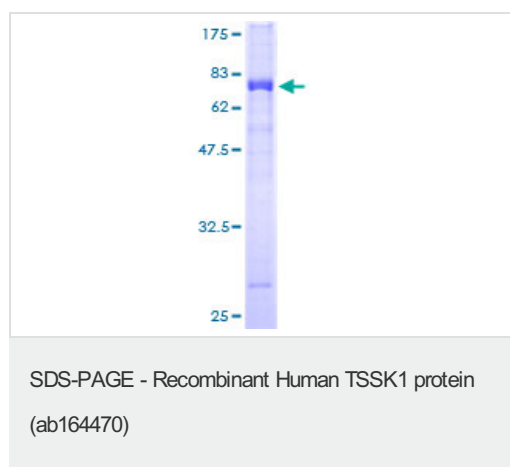
Autophosphorylated.

### Cellular localization

Cytoplasm. Cytoplasmic vesicle > secretory vesicle > acrosome. Cell projection > cilium > flagellum. In spermatozoa, present in the sperm head and in the flagellum.

## Images

---



ab164470 on a 12.5% SDS-PAGE stained with Coomassie Blue.

**Please note:** All products are "FOR RESEARCH USE ONLY. NOT FOR USE IN DIAGNOSTIC PROCEDURES"

## Our Abpromise to you: Quality guaranteed and expert technical support

---

- Replacement or refund for products not performing as stated on the datasheet
- Valid for 12 months from date of delivery
- Response to your inquiry within 24 hours
- We provide support in Chinese, English, French, German, Japanese and Spanish
- Extensive multi-media technical resources to help you

- We investigate all quality concerns to ensure our products perform to the highest standards

If the product does not perform as described on this datasheet, we will offer a refund or replacement. For full details of the Abpromise, please visit <https://www.abcam.com/abpromise> or contact our technical team.

### **Terms and conditions**

---

- Guarantee only valid for products bought direct from Abcam or one of our authorized distributors