

Product datasheet

Recombinant human TYK2 protein ab125539

2 Images

Overview

Product name	Recombinant human TYK2 protein
Protein length	Protein fragment

Description

Nature	Recombinant
Source	Baculovirus infected Sf9 cells
Amino Acid Sequence	
Accession	P29597
Species	Human
Molecular weight	110 kDa including tags
Amino acids	442 to 1187

Specifications

Our [Abpromise guarantee](#) covers the use of **ab125539** in the following tested applications.

The application notes include recommended starting dilutions; optimal dilutions/concentrations should be determined by the end user.

Biological activity	The specific activity of ab125539 was determined to be 24 nmol/min/mg.
Applications	Western blot Functional Studies SDS-PAGE
Purity	> 70 % Densitometry. Purity determined to be >70% by densitometry.
Form	Liquid
Additional notes	ab204877 (Poly (4:1 Glu, Tyr) peptide) can be utilized as a substrate for assessing kinase activity

Preparation and Storage

Stability and Storage	Shipped on dry ice. Upon delivery aliquot and store at -80°C. Avoid freeze / thaw cycles. pH: 7.50 Constituents: 0.31% Glutathione, 0.002% PMSF, 0.004% DTT, 0.79% Tris HCl, 0.003% EDTA,
------------------------------	---

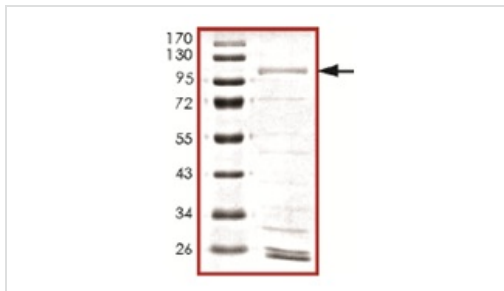
25% Glycerol, 0.88% Sodium chloride

This product is an active protein and may elicit a biological response in vivo, handle with caution.

General Info

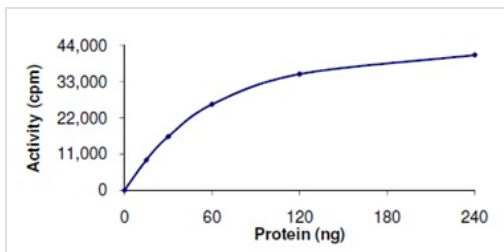
Function	Probably involved in intracellular signal transduction by being involved in the initiation of type I IFN signaling. Phosphorylates the interferon-alpha/beta receptor alpha chain.
Tissue specificity	Observed in all cell lines analyzed. Expressed in a variety of lymphoid and non-lymphoid cell lines.
Involvement in disease	Defects in TYK2 are the cause of protein-tyrosine kinase 2 deficiency (TYK2 deficiency) [MIM:611521]; also known as autosomal recessive hyper-IgE syndrome (HIES) with atypical mycobacteriosis. TYK2 deficiency consists of a primary immunodeficiency characterized by recurrent skin abscesses, pneumonia, and highly elevated serum IgE.
Sequence similarities	Belongs to the protein kinase superfamily. Tyr protein kinase family. JAK subfamily. Contains 1 FERM domain. Contains 1 protein kinase domain. Contains 1 SH2 domain.
Domain	The FERM domain mediates interaction with JAKMIP1.

Images



SDS-PAGE analysis of ab125539.

SDS-PAGE - Recombinant human TYK2 protein
(ab125539)



The specific activity of ab125539 was determined to be 24 nmol/min/mg by Kinase Assay.

Functional Studies - Recombinant human TYK2
protein (ab125539)

Please note: All products are "FOR RESEARCH USE ONLY. NOT FOR USE IN DIAGNOSTIC PROCEDURES"

Our Abpromise to you: Quality guaranteed and expert technical support

- Replacement or refund for products not performing as stated on the datasheet
- Valid for 12 months from date of delivery
- Response to your inquiry within 24 hours

- We provide support in Chinese, English, French, German, Japanese and Spanish
- Extensive multi-media technical resources to help you
- We investigate all quality concerns to ensure our products perform to the highest standards

If the product does not perform as described on this datasheet, we will offer a refund or replacement. For full details of the Abpromise, please visit <https://www.abcam.com/abpromise> or contact our technical team.

Terms and conditions

- Guarantee only valid for products bought direct from Abcam or one of our authorized distributors