

Product datasheet

Recombinant Human UBA2 protein (His tag) ab219280

1 Image

Description

| | | |
|-----------------------------------|--|--|
| Product name | Recombinant Human UBA2 protein (His tag) | |
| Purity | > 85 % SDS-PAGE. Affinity purified | |
| Endotoxin level | < 1.000 Eu/µg | |
| Expression system | Baculovirus infected insect cells | |
| Accession | Q9UBT2 | |
| Protein length | Full length protein | |
| Animal free | No | |
| Nature | Recombinant | |
| Species | Human | |
| Sequence | <pre> ADLMALSRGL PRELAEAVAG GRVLVVGAGG IGCELLKNLV LTGFSHIDLI DLDTIDVSNL NRQFLFQKKH VGRSKAQVAK ESVLQFYPKA NMAYHDSIM NPDYNVEFFR QFILVMNALD NRAARNHVNR MCLAADVPLI ESGTAGYLGQ VTTIKKGVTE CYECHKPTQ RTFPGCTIRN TPSEPIHCIV WAKYLFNQLF GEEDADQEVs PDRADPEAAW EPTEAEARAR ASNEDGDIKR ISTKEWAKST GYDPVKLFTK LFKDDIRYLL TMDKLWRKRK PPVPLDWAEV QSQGEETNAS DQQNEPQLGL KDQQVLDVKS YARLFSKSIE TLRVHLAEKG DGAELIWDKD DPSAMDFVTS AANLRMHIFS MNMKS RFDIK SMAGNIIPAI ATTN AVIAGL MLEGLKILS GKIDQCRTIF LNKQPNPRKK LLVPCALDPP NPNCYVCASK PEVTVRLNVH KVTVLTLQDK MKEKFAMVA PDVQIEDGKG TILISSEEGE TEANNHKKLS EFGIRNGSRL QADDFLQDYT LLINILHSED LGKDVEFEVV GDAPEKVGPK QAEDA AKSIT NGSDDGAQPS TSTAQEQQDDV LMDSDEEDS SNNADVSEEE RSRKRKLDEK ENLSAKRSRI EQKEELDDVI ALDHHHHHHH </pre> | |
| Predicted molecular weight | 72 kDa including tags | |
| Amino acids | 1 to 640 | |
| Tags | His tag C-Terminus | |

Specifications

Our [Abpromise guarantee](#) covers the use of **ab219280** in the following tested applications.

The application notes include recommended starting dilutions; optimal dilutions/concentrations should be determined by the end user.

Applications SDS-PAGE

Form Liquid

Preparation and Storage

Stability and Storage Shipped at 4°C. Store at +4°C short term (1-2 weeks). Upon delivery aliquot. Store at -20°C or -80°C. Avoid freeze / thaw cycle.

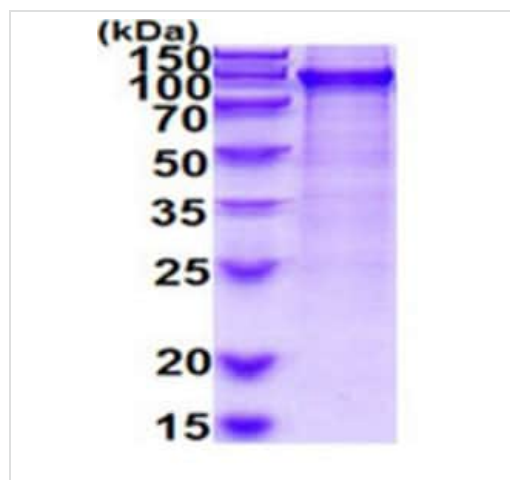
pH: 7.40

Constituents: 90% PBS, 10% Glycerol (glycerin, glycerine)

General Info

Relevance Function: The heterodimer acts as a E1 ligase for SUMO1, SUMO2, SUMO3, and probably SUMO4. It mediates ATP-dependent activation of SUMO proteins followed by formation of a thioester bond between a SUMO protein and a conserved active site cysteine residue on UBA2/SAE2. Pathway: Protein modification; protein sumoylation. Similarity: Belongs to the ubiquitin-activating E1 family. PTM: Sumoylated with SUMO1 and SUMO2/3 and by UBC9. Sumoylation at Lys-236 inhibits enzymatic activity. Sumoylation at the C-terminal lysine cluster plays an essential role in nuclear trafficking.

Images



15% SDS-PAGE - Recombinant Human UBA2 protein (His tag)
(ab219280) at 3 µg.

SDS-PAGE - Recombinant Human UBA2 protein
(His tag) (ab219280)

Please note: All products are "FOR RESEARCH USE ONLY. NOT FOR USE IN DIAGNOSTIC PROCEDURES"

Our Abpromise to you: Quality guaranteed and expert technical support

- Replacement or refund for products not performing as stated on the datasheet
- Valid for 12 months from date of delivery
- Response to your inquiry within 24 hours

- We provide support in Chinese, English, French, German, Japanese and Spanish
- Extensive multi-media technical resources to help you
- We investigate all quality concerns to ensure our products perform to the highest standards

If the product does not perform as described on this datasheet, we will offer a refund or replacement. For full details of the Abpromise, please visit <https://www.abcam.com/abpromise> or contact our technical team.

Terms and conditions

- Guarantee only valid for products bought direct from Abcam or one of our authorized distributors