

Product datasheet

Recombinant Human UBE2I / UBC9 protein ab151910

1 Image

Description

Product name	Recombinant Human UBE2I / UBC9 protein	
Purity	> 95 % Densitometry.	
Expression system	Escherichia coli	
Accession	P63279	
Protein length	Full length protein	
Animal free	No	
Nature	Recombinant	
Species	Human	
Sequence	MSGIALSRLAQRKAWRKDHPFGFVAVPTKNPDGTMNLM NWECAIPGKKG TPWEGGLFKLRMLFKDDYPSSPPKCKFEPPLFHPNVYPS GTVCLSILEED KDWRPATICQILLGIQELLNEPNIQDPAQAEAYTYCQNRVE YEKRVRA QAKKFAPS	
Predicted molecular weight	19 kDa including tags	
Amino acids	1 to 158	
Tags	His tag N-Terminus	

Specifications

Our [Abpromise guarantee](#) covers the use of **ab151910** in the following tested applications.

The application notes include recommended starting dilutions; optimal dilutions/concentrations should be determined by the end user.

Applications	Western blot
	SDS-PAGE
Form	Liquid

Preparation and Storage

Stability and Storage	Shipped on dry ice. Upon delivery aliquot and store at -80°C. Avoid freeze / thaw cycles. pH: 7.00
------------------------------	---

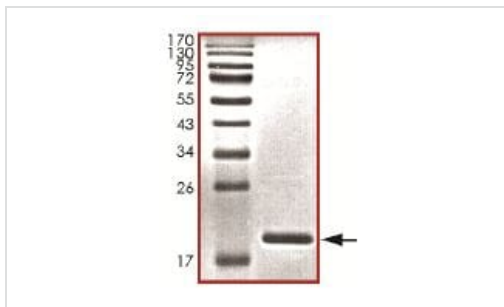
Preservative: 1.02% Imidazole

Constituents: 0.002% PMSF, 0.82% Sodium phosphate, 0.04% DTT, 25% Glycerol, 1.75% Sodium chloride

General Info

Function	Accepts the ubiquitin-like proteins SUMO1, SUMO2, SUMO3 and SUMO4 from the UBLE1A-UBLE1B E1 complex and catalyzes their covalent attachment to other proteins with the help of an E3 ligase such as RANBP2 or CBX4. Necessary for sumoylation of FOXL2 and KAT5. Essential for nuclear architecture and chromosome segregation.
Tissue specificity	Expressed in heart, skeletal muscle, pancreas, kidney, liver, lung, placenta and brain. Also expressed in testis and thymus.
Pathway	Protein modification; protein sumoylation.
Sequence similarities	Belongs to the ubiquitin-conjugating enzyme family.
Cellular localization	Nucleus. Cytoplasm. Mainly nuclear. In spermatocytes, localizes in synaptonemal complexes. Recruited by BCL11A into the nuclear body.

Images



SDS-PAGE analysis of ab151910.

SDS-PAGE - Recombinant Human UBE2I / UBC9 protein (ab151910)

Please note: All products are "FOR RESEARCH USE ONLY. NOT FOR USE IN DIAGNOSTIC PROCEDURES"

Our Abpromise to you: Quality guaranteed and expert technical support

- Replacement or refund for products not performing as stated on the datasheet
- Valid for 12 months from date of delivery
- Response to your inquiry within 24 hours
- We provide support in Chinese, English, French, German, Japanese and Spanish
- Extensive multi-media technical resources to help you
- We investigate all quality concerns to ensure our products perform to the highest standards

If the product does not perform as described on this datasheet, we will offer a refund or replacement. For full details of the Abpromise, please visit <https://www.abcam.com/abpromise> or contact our technical team.

Terms and conditions

- Guarantee only valid for products bought direct from Abcam or one of our authorized distributors