

Product datasheet

Recombinant Human UCHL3 protein ab167959

1 Image

Description

<b>Product name</b>	Recombinant Human UCHL3 protein	
<b>Purity</b>	> 95 % SDS-PAGE. Assessed by densitometry.	
<b>Expression system</b>	Escherichia coli	
<b>Accession</b>	<a href="#">P15374</a>	
<b>Protein length</b>	Full length protein	
<b>Animal free</b>	No	
<b>Nature</b>	Recombinant	
<b>Species</b>	Human	
<b>Sequence</b>	<pre>MEGQRWLPLEANPEVTNQFLKQLGLHPNWQFVDVYGMD PELLSMVPRPVC AVLLLPITEKEYEVFRTEEEEEKIKSQGQDVTSSVYFMKQTIS NACGTIGL IHAIANNKDKMHFESGSTLKKFLEESVSMSP EERARYLEN YDAIRVTHET SAHEGQTEAPSIDEKVDLHFIALVHVDGHL YELDGRKPFPI NHGETSDET LLEDAIEVCKKFMERDPDELRFNAIALSAA</pre>	
<b>Predicted molecular weight</b>	27 kDa including tags	
<b>Amino acids</b>	1 to 230	
<b>Tags</b>	His tag N-Terminus	

Specifications

Our [Abpromise guarantee](#) covers the use of **ab167959** in the following tested applications.  
The application notes include recommended starting dilutions; optimal dilutions/concentrations should be determined by the end user.

<b>Applications</b>	Western blot SDS-PAGE
<b>Form</b>	Liquid

Preparation and Storage

## Stability and Storage

Shipped on dry ice. Upon delivery aliquot and store at -80°C. Avoid freeze / thaw cycles.

pH: 7.00

Preservative: 1.02% Imidazole

Constituents: 0.002% PMSF, 0.82% Sodium phosphate, 0.004% DTT, 25% Glycerol, 1.74% Sodium chloride

## General Info

### Function

Deubiquitinating enzyme (DUB) that controls levels of cellular ubiquitin through processing of ubiquitin precursors and ubiquitinated proteins. Thiol protease that recognizes and hydrolyzes a peptide bond at the C-terminal glycine of either ubiquitin or NEDD8. Has a 10-fold preference for Arg and Lys at position P3". Deubiquitinates ENAC in apical compartments, thereby regulating apical membrane recycling. Indirectly increases the phosphorylation of IGF1R, AKT and FOXO1 and promotes insulin-signaling and insulin-induced adipogenesis. Required for stress-response retinal, skeletal muscle and germ cell maintenance. May be involved in working memory.

### Tissue specificity

Highly expressed in heart, skeletal muscle, and testis.

### Sequence similarities

Belongs to the peptidase C12 family.

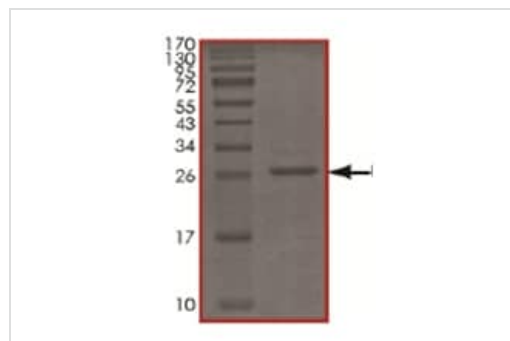
### Post-translational modifications

Phosphorylated upon DNA damage, probably by ATM or ATR.

### Cellular localization

Cytoplasm.

## Images



SDS Page analysis of ab167959

SDS-PAGE - Recombinant Human UCHL3 protein  
(ab167959)

**Please note:** All products are "FOR RESEARCH USE ONLY. NOT FOR USE IN DIAGNOSTIC PROCEDURES"

## Our Abpromise to you: Quality guaranteed and expert technical support

- Replacement or refund for products not performing as stated on the datasheet
- Valid for 12 months from date of delivery
- Response to your inquiry within 24 hours
- We provide support in Chinese, English, French, German, Japanese and Spanish

- Extensive multi-media technical resources to help you
- We investigate all quality concerns to ensure our products perform to the highest standards

If the product does not perform as described on this datasheet, we will offer a refund or replacement. For full details of the Abpromise, please visit <https://www.abcam.com/abpromise> or contact our technical team.

### **Terms and conditions**

---

- Guarantee only valid for products bought direct from Abcam or one of our authorized distributors