

Product datasheet

Recombinant Human Uridine Phosphorylase 1 protein  
ab101152

1 Image

Description

<b>Product name</b>	Recombinant Human Uridine Phosphorylase 1 protein
<b>Purity</b>	> 90 % SDS-PAGE.
<b>Expression system</b>	Escherichia coli
<b>Accession</b>	<a href="#">Q16831</a>
<b>Protein length</b>	Full length protein
<b>Animal free</b>	No
<b>Nature</b>	Recombinant
<b>Species</b>	Human
<b>Sequence</b>	<p><b>MGSSHHHHHH SSSLVPRGSH</b> MAATGANA EK            AESHNDCPVR LLNPNIAMK EDILYHFNL T SRHNFPALF            GDVKFVCVGG SPSRMKAFIR CVGAELGLDC            PGRDYPNICA GTDRYAMYKV GPVLSVSHGM GIPSISIMLH            ELIKLLYYAR CSNVTIIRIG TSGGIGLEPG TVVITEQAVD            TCFKAEFEQI VLGKRVIRKT DLNKKLVQEL LLCSAELSEF            TTVVGNTMCT LDFYEGQGRL DGALCSYTEK            DKQAYLEAAY AAGVRNIEME SSVFAAMCSA            CGLQAAVVCV TLLNRLEGDQ ISSPRNVLSE            YQQRPQRLVS YFIKKKLSKA</p>
<b>Predicted molecular weight</b>	36 kDa including tags
<b>Amino acids</b>	1 to 310
<b>Tags</b>	His tag N-Terminus

Specifications

Our [Abpromise guarantee](#) covers the use of **ab101152** in the following tested applications.

The application notes include recommended starting dilutions; optimal dilutions/concentrations should be determined by the end user.

<b>Applications</b>	SDS-PAGE Mass Spectrometry
<b>Mass spectrometry</b>	MALDI-TOF

**Form** Liquid

## Preparation and Storage

### Stability and Storage

Shipped at 4°C. Store at +4°C short term (1-2 weeks). Upon delivery aliquot. Store at -20°C or -80°C. Avoid freeze / thaw cycle.

pH: 8.00

Constituents: 0.0154% DTT, 0.316% Tris HCl, 40% Glycerol (glycerin, glycerine), 1.16% Sodium chloride

## General Info

### Function

Catalyzes the reversible phosphorylytic cleavage of uridine and deoxyuridine to uracil and ribose- or deoxyribose-1-phosphate. The produced molecules are then utilized as carbon and energy sources or in the rescue of pyrimidine bases for nucleotide synthesis.

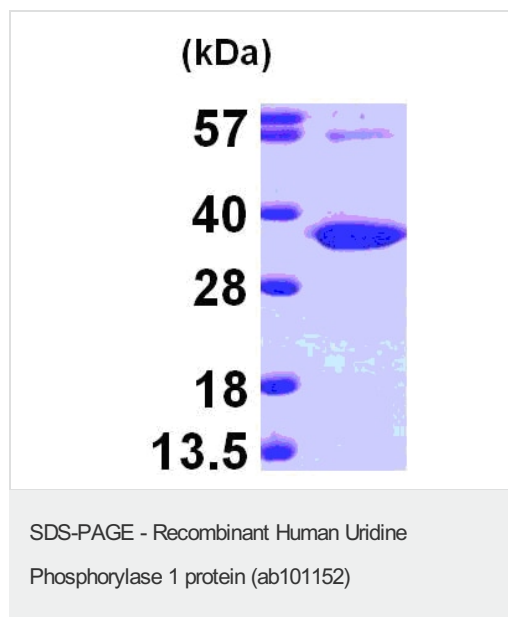
### Pathway

Pyrimidine metabolism; UMP biosynthesis via salvage pathway; uracil from uridine (phosphorylase route); step 1/1.

### Sequence similarities

Belongs to the PNP/UDP phosphorylase family.

## Images



ab101152 at 3 µg, 15% SDS-PAGE

**Please note:** All products are "FOR RESEARCH USE ONLY. NOT FOR USE IN DIAGNOSTIC PROCEDURES"

## Our Abpromise to you: Quality guaranteed and expert technical support

- Replacement or refund for products not performing as stated on the datasheet
- Valid for 12 months from date of delivery
- Response to your inquiry within 24 hours

- We provide support in Chinese, English, French, German, Japanese and Spanish
- Extensive multi-media technical resources to help you
- We investigate all quality concerns to ensure our products perform to the highest standards

If the product does not perform as described on this datasheet, we will offer a refund or replacement. For full details of the Abpromise, please visit <https://www.abcam.com/abpromise> or contact our technical team.

### **Terms and conditions**

---

- Guarantee only valid for products bought direct from Abcam or one of our authorized distributors