

Product datasheet

Recombinant Human VAP1 protein ab160132

1 Image

Overview

<b>Product name</b>	Recombinant Human VAP1 protein
<b>Protein length</b>	Full length protein

Description

<b>Nature</b>	Recombinant
<b>Source</b>	Wheat germ
<b>Amino Acid Sequence</b>	
<b>Species</b>	Human
<b>Sequence</b>	<p>MNQKTILVLLILAVITIFALVCVLLVGRGGDGGEPSQLPH  CPSVSPSAQP  WTHPGQSQLFADLSREELTAVMRFLTQRLGPGLVDA  AQARPSDNCVFSVE  LQLPPKAAALAHLDRGSPPPAREALAMFFGRQPQP  VSELVVGPLPHPS  YMRDVTVERHGGPLPYHRRPVLFQEYLDIDQMIFNREL  PQASGLLHHCCF  YKHRGRNLVTMTTAPRGLQSGDRATWFGLYYNISGAG  FFLHHVGLELLVN  HKALDPARWTIQKVFYQGGRYDSLAEQLEAQAQFEAGLVN  VVLIPDNGTGGSW  SLKSPVPPGPAPPLQFYPPQGPFRFSVQGSRVASSLWT  FSFGLGAFSGPRIF  DVRFQGERLVYEISLQEALAYGGNSPAAMTTRYVDGG  FGMGKYTTPLTR  GVDCPYLATYVDWHFLLESQAPKTIRDAFCVFEQNQG  LPLRRHSDLYSH  YFGGLAETVLVVRSMSTLLNYDYVWDTVFHPSGAIEIR  FYATGYSSAFL  FGATGKYGNQVSEHTLGTVHTSAHFKVDLDVAGLEN  WVWAEDMVFPMA  VPWSPEHQLQRLQVTRKLLMEEQAFLVGSATPRYL  YLASNHSNKWGHP  RGYRIQMLSFAGEPLPQNSSMARGFSWERYQLAVTQR  KEEEPSSSSVFNQ</p>

NDPWAPTVD FSDFINNETIAGKDLVAWVTAGFLHIPHA  
EDIPNTVTVGNG  
VGFFLRPYNFFDEDPSFY SADSIFYFRGDQDAGACEVN  
PLACLPQAAACAP DLPAF SHGGF SHN

**Amino acids** 1 to 763  
**Tags** GST tag N-Terminus

## Specifications

---

Our [Abpromise guarantee](#) covers the use of **ab160132** in the following tested applications.

The application notes include recommended starting dilutions; optimal dilutions/concentrations should be determined by the end user.

**Applications** ELISA  
Western blot

**Form** Liquid

**Additional notes** Protein concentration is above or equal to 0.05 mg/ml.

## Preparation and Storage

---

**Stability and Storage** Shipped on dry ice. Upon delivery aliquot and store at -80°C. Avoid freeze / thaw cycles.  
pH: 8.00  
Constituents: 0.31% Glutathione, 0.79% Tris HCl

## General Info

---

**Function** Cell adhesion protein that participates in lymphocyte recirculation by mediating the binding of lymphocytes to peripheral lymph node vascular endothelial cells in an L-selectin-independent fashion. Has a monoamine oxidase activity. May play a role in adipogenesis.

**Tissue specificity** Strongly expressed on the high endothelial venules of peripheral lymph nodes and on hepatic endothelia. Also highly expressed in appendix, lung and small intestine. Expressed also in adipose tissue, in bone marrow, colon, heart, kidney, ovary, pancreas, placenta, prostate, skeletal muscle, spleen and testis.

**Sequence similarities** Belongs to the copper/topaquinone oxidase family.

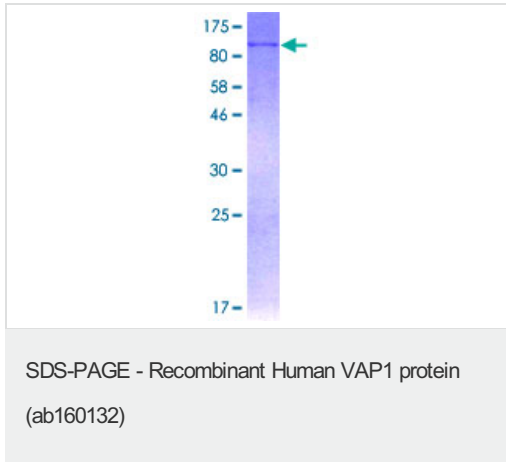
**Post-translational modifications** Topaquinone (TPQ) is generated by copper-dependent autoxidation of a specific tyrosyl residue. N- and O-glycosylated.

**Cellular localization** Membrane.

---

## Images

---



ab160132 on a 12.5% SDS-PAGE stained with Coomassie Blue.

**Please note:** All products are "FOR RESEARCH USE ONLY AND ARE NOT INTENDED FOR DIAGNOSTIC OR THERAPEUTIC USE"

### Our Abpromise to you: Quality guaranteed and expert technical support

---

- Replacement or refund for products not performing as stated on the datasheet
- Valid for 12 months from date of delivery
- Response to your inquiry within 24 hours
- We provide support in Chinese, English, French, German, Japanese and Spanish
- Extensive multi-media technical resources to help you
- We investigate all quality concerns to ensure our products perform to the highest standards

If the product does not perform as described on this datasheet, we will offer a refund or replacement. For full details of the Abpromise, please visit <https://www.abcam.com/abpromise> or contact our technical team.

### Terms and conditions

---

- Guarantee only valid for products bought direct from Abcam or one of our authorized distributors