

Product datasheet

Recombinant Human VEGF Receptor 1 protein (His tag)
 ab267954

1 Image

Description

Product name	Recombinant Human VEGF Receptor 1 protein (His tag)
Purity	> 85 % SDS-PAGE.
Expression system	Mammalian
Accession	P17948
Protein length	Protein fragment
Animal free	No
Nature	Recombinant
Species	Human

Sequence	<p>SKLKDPELSLKGQTQHIMQAGQTLHLQCRGEEAAHKWSLPE MVSKESEERLSI TKSACGRNGKQFCSTLTLNTAQANHTGFYSCKYLAVPTSK KKETESAM FISDTGRPFVEMYSEIPEIIHMTEGRELVIPCRVTSPNITVTL KKFPLDT LIPDGKRIIWDSRKGFIIISNATYKEIGLLTCEATVNGHLYKTNY LTHRQT NTIIDVQISTPRPVKLLRGHTLVLNCTATTPLNTRVQMTWSY PDEKNKRA SVRRRIDQSNSHANIFYSVLTIDKMQNKDGLYTCRVRSGP SFKSVNTSV HYDKAFITVKHRKQQVLETVAGKRSYRLSMKVKAFPSPE VVWLKDGLPA TEKSARYLTRGYSLIHKDVTEEDAGNYTILLSIKQSNVFNLT ATLMNV KPQIYEKAVSSFPDPALYPLGSRQILTCTAYGIPQPTIKWFW HPCNHNHS EARCDFCSNNEESFILDADSNMGNRIESITQRMAIIEGKNK MASTLVVAD SRISGMCIASNKVGTVGRNISFYTTDVPNGFHVNLEKMPTE GEDLKLS CTVNKFLYRDVTWILLRTVNNRTMHYSISKQKMAITKEHSIT LNLTIMNV</p>
-----------------	---

SLQDSGTACRARNVYTGEEILQKKEITIRDQEAPYLLRNLSDHTVAISS
STTLDCHANGVPEPQITWFKNNHKIQQEPGILGPGSSSTLFI
ERVTEEDE GVYHCKATNQKGSVESSAYLTVQGTSDKSN

Predicted molecular weight	151 kDa
Amino acids	27 to 756
Tags	His tag C-Terminus

Specifications

Our [Abpromise guarantee](#) covers the use of **ab267954** in the following tested applications.

The application notes include recommended starting dilutions; optimal dilutions/concentrations should be determined by the end user.

Applications	SDS-PAGE
Form	Liquid

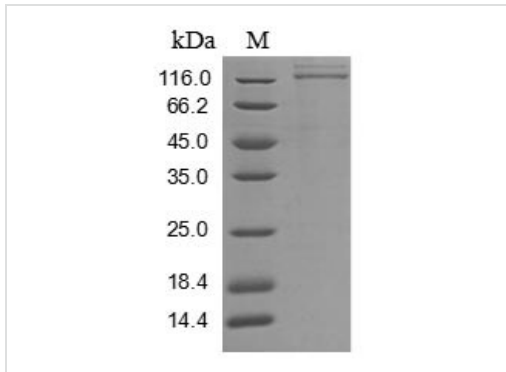
Preparation and Storage

Stability and Storage	Shipped at 4°C. Store at +4°C short term (1-2 weeks). Upon delivery aliquot. Store at -20°C or -80°C. Avoid freeze / thaw cycle. pH: 7.2 Constituents: PBS, 6% Trehalose Lyophilized from.
------------------------------	---

General Info

Function	Receptor for VEGF, VEGFB and PGF. Has a tyrosine-protein kinase activity. The VEGF-kinase ligand/receptor signaling system plays a key role in vascular development and regulation of vascular permeability. Isoform sFlt1 may have an inhibitory role in angiogenesis.
Tissue specificity	Mostly in normal lung, but also in placenta, liver, kidney, heart and brain tissues. Specifically expressed in most of the vascular endothelial cells, and also expressed in peripheral blood monocytes. Isoform sFlt1 is strongly expressed in placenta.
Sequence similarities	Belongs to the protein kinase superfamily. Tyr protein kinase family. CSF-1/PDGF receptor subfamily. Contains 7 Ig-like C2-type (immunoglobulin-like) domains. Contains 1 protein kinase domain.
Cellular localization	Secreted and Cell membrane.

Images



SDS-PAGE analysis of Recombinant Human VEGF Receptor 1 protein (His tag) (ab267954)

SDS-PAGE - Recombinant Human VEGF Receptor 1 protein (His tag) (ab267954)

Please note: All products are "FOR RESEARCH USE ONLY. NOT FOR USE IN DIAGNOSTIC PROCEDURES"

Our Abpromise to you: Quality guaranteed and expert technical support

- Replacement or refund for products not performing as stated on the datasheet
- Valid for 12 months from date of delivery
- Response to your inquiry within 24 hours
- We provide support in Chinese, English, French, German, Japanese and Spanish
- Extensive multi-media technical resources to help you
- We investigate all quality concerns to ensure our products perform to the highest standards

If the product does not perform as described on this datasheet, we will offer a refund or replacement. For full details of the Abpromise, please visit <https://www.abcam.com/abpromise> or contact our technical team.

Terms and conditions

- Guarantee only valid for products bought direct from Abcam or one of our authorized distributors