

Product datasheet

Recombinant Human VPS53 protein ab163041

1 Image

Description

<b>Product name</b>	Recombinant Human VPS53 protein
<b>Expression system</b>	Wheat germ
<b>Protein length</b>	Full length protein
<b>Animal free</b>	No
<b>Nature</b>	Recombinant
<b>Species</b>	Human

**Sequence**

```

MEEEELEFVEELEAVLQLTPEVQLAIEQVFPSQDPL
DRADFNAVEYINT
LFPTEQSLANIDEVVNKIRLKIRRLDDNIRTVVRGQTNVG
QDGRQVKEIT
RDIKQLDHAKRHLTTSITLNLHMLAGGVDLSLEAMTR
RRQYGEVANLLQ
GVMNVLEHFHKYMGIPQIRQLSERVKAAQTELGQQILA
DFEEAFPSQGTK
RPGGPSNVLRDACLVANILDPRIQEIIKKFIKQHLSEYL
VLFQENQDVA
WLDKIDRRYAWIKRQLVDYEEKYGRMFPREWCAERI
AVEFCHVTRAEAL
KIMRTRAKEIEVKLLLFAIQRRTNFEGFLAKRFSGCTLTD
GTLKKLESPP
PSTNPFLEDEPTPEMEELATEKGDLDQPKPKAPDN
PFHGMVSKCFEPHL
YYIESQDKNLGELIDRFVADFKAQGPPKPNTDEGGAV
LPSCADLFVYYK
KCMVQCSQLSTGEPMIALTTFQKYLREYAWKILSGNLP
KTTTSSGGLTI
SSLLKEKEGSEVAKFTLEELCLICNILSTAEYCLATTQQ
LEEKLKEKVDV
SLIERINLTGEMDTFSTVISSIQLLVQDLDAACDPALTA
MSKMQWQNVE
HVGDAQSPYVTSVILHIKQNVPIIRDNLASTRKYFTQFCVK
FANSFIPKFI THLFKCKPISMVGAEQVRWT

```

<b>Amino acids</b>	1 to 670
<b>Tags</b>	GST tag N-Terminus

## Specifications

---

Our [Abpromise guarantee](#) covers the use of **ab163041** in the following tested applications.

The application notes include recommended starting dilutions; optimal dilutions/concentrations should be determined by the end user.

**Applications** Western blot

ELISA

**Form** Liquid

**Additional notes**

## Preparation and Storage

---

**Stability and Storage** Shipped on dry ice. Upon delivery aliquot and store at -80°C. Avoid freeze / thaw cycles.

pH: 8.00

Constituents: 0.31% Glutathione, 0.79% Tris HCl

## General Info

---

**Function** May be involved in retrograde transport of early and late endosomes to the late Golgi.

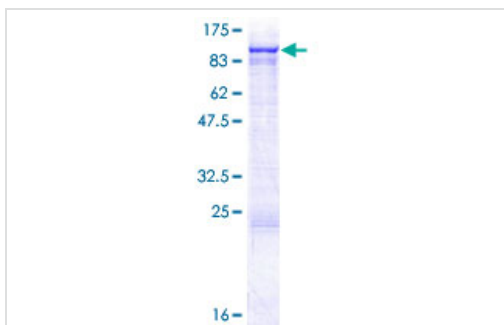
**Sequence similarities** Belongs to the VPS53 family.

**Cellular localization** Golgi apparatus > trans-Golgi network membrane. Endosome membrane.

---

## Images

---



ab163041 on a 12.5% SDS-PAGE stained with Coomassie Blue.

SDS-PAGE - Recombinant Human VPS53 protein  
(ab163041)

**Please note:** All products are "FOR RESEARCH USE ONLY. NOT FOR USE IN DIAGNOSTIC PROCEDURES"

## Our Abpromise to you: Quality guaranteed and expert technical support

---

- Replacement or refund for products not performing as stated on the datasheet
- Valid for 12 months from date of delivery
- Response to your inquiry within 24 hours

- We provide support in Chinese, English, French, German, Japanese and Spanish
- Extensive multi-media technical resources to help you
- We investigate all quality concerns to ensure our products perform to the highest standards

If the product does not perform as described on this datasheet, we will offer a refund or replacement. For full details of the Abpromise, please visit <https://www.abcam.com/abpromise> or contact our technical team.

### **Terms and conditions**

---

- Guarantee only valid for products bought direct from Abcam or one of our authorized distributors