

Product datasheet

Recombinant Human WBP11 protein ab162652

1 Image

Description

Product name	Recombinant Human WBP11 protein
Expression system	Wheat germ
Protein length	Full length protein
Animal free	No
Nature	Recombinant
Species	Human

Sequence

```

MGRRSTSSTKSGKFMNPTDQARKEARKRELKKNKKQ
RMMVRAAVLKMKDP
KQIIRDMEKLDMEFNPVQQPQLNEKVLKDKRKKLRE
TFERILRLYEKEN
PDIYKELRKLEVEYEQKRAQLSQYFDAVKNAQHVEVE
SIPLPDMPHAPSN
ILIQDIPLPGAQPPSILKKTSAYGPPTRAVSILPLLGHGVP
RLPPGRKPP
GPPPGPPPQVVQMYGRKVGFALDLPPRRRDEDMLY
SPELAQRGHDDDSVS
STSEDDGYPEDMDQDKHDDSTDDSDTDKSDGESDG
DEFVHRDNGERDNNE
EKKSGLSVRFADMPGKSRKKKKNMKELTPLQAMMLR
MAGQEIPPEGREVE
EFSEDDDEDDSDSSEAQKQSQKHKEESHSDGTST
ASSQQQAPPQSVPPS
QQAPPMPGPPPLGPPAPPLRPPGPPTGLPPGPPP
GAPPFLRPPGMPGL
RGPLRLLPPGPPGRPPGPPGPPGLPPGPPPRG
PPRLPPPAPPPIP
PPRPGMMRPPLVPPLGPAPPGLFPPAPLPNPGVLSA
PPNLIQRPKADDTS
AATIEKKATATISAKPQITNPKAEITRFVPTALRVRRENK
GATAAPQRKS
EDDSAVPLAKAAPKSGPSVPVSVQTKDDVYEA FMKE
MEGLL

```

Amino acids	1 to 641
Tags	GST tag N-Terminus

Specifications

Our [Abpromise guarantee](#) covers the use of **ab162652** in the following tested applications.

The application notes include recommended starting dilutions; optimal dilutions/concentrations should be determined by the end user.

Applications	Western blot ELISA
Form	Liquid
Additional notes	Protein concentration is above or equal to 0.05 mg/ml.

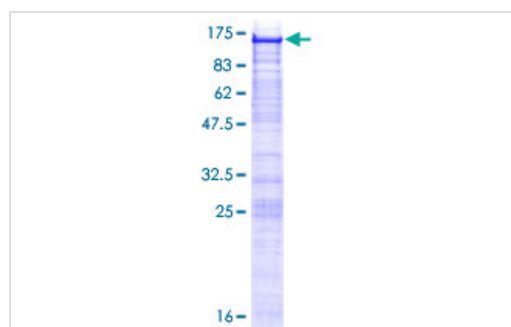
Preparation and Storage

Stability and Storage	Shipped on dry ice. Upon delivery aliquot and store at -80°C. Avoid freeze / thaw cycles. pH: 8.00 Constituents: 0.31% Glutathione, 0.79% Tris HCl
------------------------------	--

General Info

Function	Activates pre-mRNA splicing. May inhibit PP1 phosphatase activity.
Tissue specificity	Ubiquitous. Highly expressed in the heart, pancreas, kidney skeletal muscle, placenta and brain (at protein level). Weakly expressed in liver and lung.
Cellular localization	Nucleus. Cytoplasm. Predominantly located in the nucleus with granular heterogeneous distribution. Excluded from nucleoli in interphase cells, distributed throughout cytoplasm in dividing cells. Colocalized with SC35 and U2B in the nucleus. In the cytoplasm, associates with the intermediate filament protein vimentin.

Images



ab162652 on a 12.5% SDS-PAGE stained with Coomassie Blue.

SDS-PAGE - Recombinant Human WBP11 protein
(ab162652)

Please note: All products are "FOR RESEARCH USE ONLY. NOT FOR USE IN DIAGNOSTIC PROCEDURES"

Our Abpromise to you: Quality guaranteed and expert technical support

- Replacement or refund for products not performing as stated on the datasheet
- Valid for 12 months from date of delivery
- Response to your inquiry within 24 hours

- We provide support in Chinese, English, French, German, Japanese and Spanish
- Extensive multi-media technical resources to help you
- We investigate all quality concerns to ensure our products perform to the highest standards

If the product does not perform as described on this datasheet, we will offer a refund or replacement. For full details of the Abpromise, please visit <https://www.abcam.com/abpromise> or contact our technical team.

Terms and conditions

- Guarantee only valid for products bought direct from Abcam or one of our authorized distributors