

Product datasheet

Recombinant Human WISP2 protein ab269159

1 Image

Description

Product name	Recombinant Human WISP2 protein	
Purity	> 95 % SDS-PAGE. NULL	
Endotoxin level	< 1.000 Eu/µg	
Expression system	Escherichia coli	
Accession	O76076	
Protein length	Full length protein	
Animal free	No	
Nature	Recombinant	
Species	Human	
Sequence	<p>MQLCPTPCTC PWPPPRCPLG VPLVLDGCGC CRVCARRLGE PCDQLHVCDA SQGLVCQPGA GPGGRGALCL LAEDDSSCEV NGRLYREGET FQPHCSIRCR CEDGGFTCVPLCSEDVRLPS WDCPHPRRVE VLGKCCPEWV CGQGGLGTQ PLPAQGPQFS GLVSSLPPGV PCPEWSTAWG PCSTTCGLGM ATRVSNQNRFCRLETQRRLC LSRPCPPSRG RSPQNSAF</p>	
Predicted molecular weight	27 kDa	
Amino acids	24 to 250	
Additional sequence information	Mature chain	

Specifications

Our [Abpromise guarantee](#) covers the use of **ab269159** in the following tested applications.

The application notes include recommended starting dilutions; optimal dilutions/concentrations should be determined by the end user.

Applications	SDS-PAGE
Form	Lyophilized

Preparation and Storage

Stability and Storage

Shipped at Room Temperature. Upon delivery aliquot. Store at -20°C or -80°C. Working aliquots stored with a carrier protein are stable for at least 3 months at -20°C to -80°C..

Constituent: 0.1% Trifluoroacetic acid

Lyophilized from.

Reconstitution

Sterile 10 mM acetic acid at 0.1 mg/mL

General Info

Function

May play an important role in modulating bone turnover. Promotes the adhesion of osteoblast cells and inhibits the binding of fibrinogen to integrin receptors. In addition, inhibits osteocalcin production.

Tissue specificity

Expressed in primary osteoblasts, fibroblasts, ovary, testes, and heart.

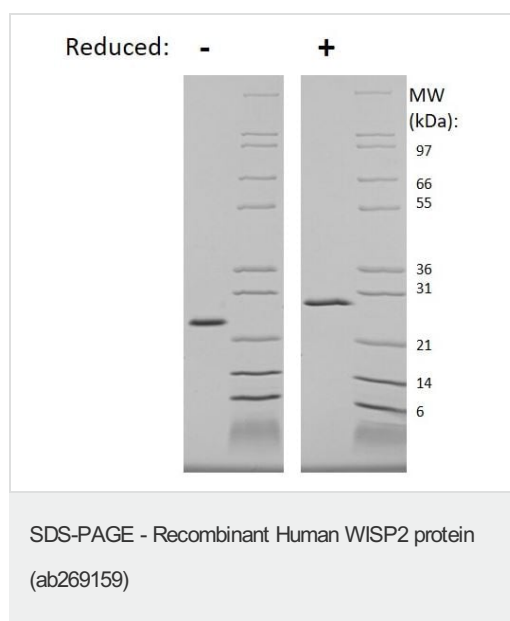
Sequence similarities

Belongs to the CCN family.
Contains 1 IGFBP N-terminal domain.
Contains 1 TSP type-1 domain.
Contains 1 VWFC domain.

Cellular localization

Secreted.

Images



SDS-PAGE analysis of ab269159 at 1ug/lane under (-) non-reducing and (+) reducing conditions. 4-20% Tris glycine gel. Stained with coomassie blue.

Please note: All products are "FOR RESEARCH USE ONLY. NOT FOR USE IN DIAGNOSTIC PROCEDURES"

Our Abpromise to you: Quality guaranteed and expert technical support

- Replacement or refund for products not performing as stated on the datasheet
- Valid for 12 months from date of delivery
- Response to your inquiry within 24 hours

- We provide support in Chinese, English, French, German, Japanese and Spanish
- Extensive multi-media technical resources to help you
- We investigate all quality concerns to ensure our products perform to the highest standards

If the product does not perform as described on this datasheet, we will offer a refund or replacement. For full details of the Abpromise, please visit <https://www.abcam.com/abpromise> or contact our technical team.

Terms and conditions

- Guarantee only valid for products bought direct from Abcam or one of our authorized distributors