

Product datasheet

Recombinant Human XYLB protein ab160725

1 Image

Description

| | |
|--------------------------|---|
| Product name | Recombinant Human XYLB protein |
| Expression system | Wheat germ |
| Protein length | Full length protein |
| Animal free | No |
| Nature | Recombinant |
| Species | Human |
| Sequence | <p>MAEHAPRRCCLGWDFSTQQVKVAVDAELNVFYEES VHFDRDLPEFGTQG GVHVHKDGLTVTSPVLMWVQALDILEKMKASGFDFS QVLALSGAGQQHG SIYWKAGAQQALTSLSPLRLHQQLQDCFSISDCPVW MDSSTTAQCRQLE AAVGGAQALSCLTGSRA YERFTGNQIAKIYQQNPEAYS HTERISLVSSFA ASLFLGSYSPIDYSDGSGMNLQIQDKVWSQACLGAC APHLEEKLSPPVP SCSVVGAISSYVQRYGFPPGCKVVAFTGDNPASLAG MRLEEGDIAVSLG TSDLFLWLQEPMPALEGHFCNPVDSQH YMALLCFK NGSLMREKIRNES VSRWSDFSKALQSTEMGNGGNLGFYFDVMEITPEIIG RHRFNTENHKVA AFPGDVEVRALIEGQFMAKRIHA EGLGYRVMSKTKILA TGGASHNREILQ VLADVFDAPVYVIDTANSACVGSAYRAFHGLAGGTDV PFSEVVKLAPNPR LAATSPGASQVYEALLPQYAKLEQRILSQTRGPPE</p> |
| Amino acids | 1 to 536 |
| Tags | GST tag N-Terminus |

Specifications

Our [Abpromise guarantee](#) covers the use of **ab160725** in the following tested applications.

The application notes include recommended starting dilutions; optimal dilutions/concentrations should be determined by the end user.

| | |
|-------------------------|--|
| Applications | ELISA Western blot |
| Form | Liquid |
| Additional notes | Protein concentration is above or equal to 0.05 mg/ml. |

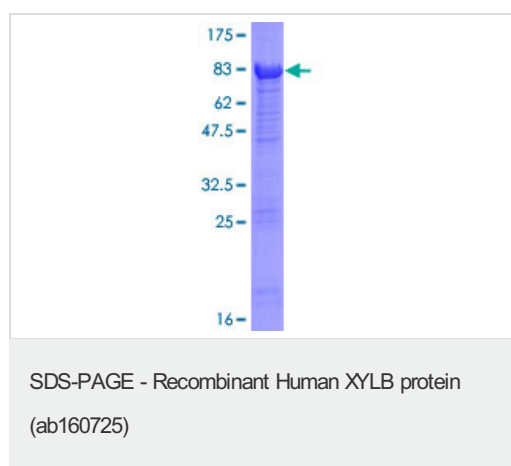
Preparation and Storage

| | |
|------------------------------|--|
| Stability and Storage | Shipped on dry ice. Upon delivery aliquot and store at -80°C. Avoid freeze / thaw cycles. pH: 8.00 Constituents: 0.31% Glutathione, 0.79% Tris HCl |
|------------------------------|--|

General Info

| | |
|------------------|--|
| Relevance | XYLB belongs to the FGGY kinase family. Catalytic activity: ATP + D-xylulose = ADP + D-xylulose 5-phosphate. |
|------------------|--|

Images



ab160725 on a 12.5% SDS-PAGE stained with Coomassie Blue.

Please note: All products are "FOR RESEARCH USE ONLY. NOT FOR USE IN DIAGNOSTIC PROCEDURES"

Our Abpromise to you: Quality guaranteed and expert technical support

- Replacement or refund for products not performing as stated on the datasheet
- Valid for 12 months from date of delivery
- Response to your inquiry within 24 hours
- We provide support in Chinese, English, French, German, Japanese and Spanish
- Extensive multi-media technical resources to help you
- We investigate all quality concerns to ensure our products perform to the highest standards

If the product does not perform as described on this datasheet, we will offer a refund or replacement. For full details of the Abpromise,

please visit <https://www.abcam.com/abpromise> or contact our technical team.

Terms and conditions

- Guarantee only valid for products bought direct from Abcam or one of our authorized distributors