

Product datasheet

Recombinant Human YKT6 protein ab161094

1 Image

Overview

Product name	Recombinant Human YKT6 protein
Protein length	Full length protein

Description

Nature	Recombinant
Source	Wheat germ
Amino Acid Sequence	
Species	Human
Sequence	MKLYSLSVLYKGEAKVLLKAAAYDVSSFSFFQRSSVQ EFMTFTSQLIVER SSKGTRASVKEQDYLCVYVRNDSLAVVIADNEYPS RVAFTLLEKVLDE FSKQVDRIDWPVGSPATHYPALDGHLSRYQNPREAD PMTKVQAELDETK ILLHNTMESLLERGEKLDLVLKSEVLGTLKAFYKTAR KQNSCCAIM
Amino acids	1 to 198
Tags	proprietary tag N-Terminus

Specifications

Our [Abpromise guarantee](#) covers the use of **ab161094** in the following tested applications. The application notes include recommended starting dilutions; optimal dilutions/concentrations should be determined by the end user.

Applications	Western blot ELISA
Form	Liquid
Additional notes	Protein concentration is above or equal to 0.05 mg/ml.

Preparation and Storage

Stability and Storage	Shipped on dry ice. Upon delivery aliquot and store at -80°C. Avoid freeze / thaw cycles.
------------------------------	-------------------------------------------------------------------------------------------

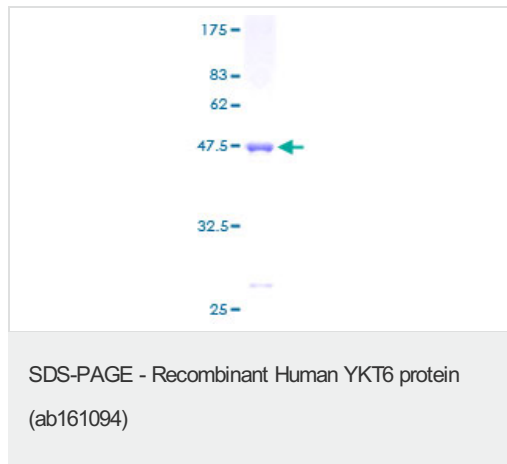
pH: 8.00

Constituents: 0.31% Glutathione, 0.79% Tris HCl

General Info

Function	Vesicular soluble NSF attachment protein receptor (v-SNARE) mediating vesicle docking and fusion to a specific acceptor cellular compartment. Functions in endoplasmic reticulum to Golgi transport; as part of a SNARE complex composed of GOSR1, GOSR2 and STX5. Functions in early/recycling endosome to TGN transport; as part of a SNARE complex composed of BET1L, GOSR1 and STX5. Has a S-palmitoyl transferase activity.
Sequence similarities	Belongs to the synaptobrevin family. Contains 1 longin domain. Contains 1 v-SNARE coiled-coil homology domain.
Domain	The longin domain regulates palmitoylation and membrane targeting.
Post-translational modifications	Palmitoylated; catalyzes its own palmitoylation. Palmitoylation is required for Golgi targeting. Farnesylation is required for Golgi targeting.
Cellular localization	Cytoplasm > cytosol. Cytoplasmic vesicle membrane. Golgi apparatus membrane. Probably cycles through vesicles between Golgi and endosomes.

Images



ab161094 on a 12.5% SDS-PAGE stained with Coomassie Blue.

Please note: All products are "FOR RESEARCH USE ONLY AND ARE NOT INTENDED FOR DIAGNOSTIC OR THERAPEUTIC USE"

Our Abpromise to you: Quality guaranteed and expert technical support

- Replacement or refund for products not performing as stated on the datasheet
- Valid for 12 months from date of delivery
- Response to your inquiry within 24 hours
- We provide support in Chinese, English, French, German, Japanese and Spanish
- Extensive multi-media technical resources to help you
- We investigate all quality concerns to ensure our products perform to the highest standards

If the product does not perform as described on this datasheet, we will offer a refund or replacement. For full details of the Abpromise, please visit <https://www.abcam.com/abpromise> or contact our technical team.

Terms and conditions

- Guarantee only valid for products bought direct from Abcam or one of our authorized distributors