

## Product datasheet

# Recombinant Human ZBTB7A protein ab132406

1 Image

### Description

|                                   |  |  |
|-----------------------------------|--|--|
| <b>Product name</b>               | Recombinant Human ZBTB7A protein   |  |
| <b>Expression system</b>          | Wheat germ   |  |
| <b>Accession</b>                  | <a href="#">Q8TB76</a>   |  |
| <b>Protein length</b>             | Full length protein  |  |
| <b>Animal free</b>                | No   |  |
| <b>Nature</b>                     | Recombinant  |  |
| <b>Species</b>                    | Human  |  |
| <b>Sequence</b>                   | MPNRRGGVSLPPTPPYLLCDTHIFSSLFLLKGSFLRR<br>QFSYCFYGMV<br>LVPFSPHPPLSLSAPSKCLRIPPLPWGWVTAPRLRSHPS<br>VTGRAVLERKP SVVAERGA |  |
| <b>Predicted molecular weight</b> | 38 kDa including tags  |  |
| <b>Amino acids</b>                | 1 to 108   |  |

### Specifications

Our [Abpromise guarantee](#) covers the use of **ab132406** in the following tested applications.

The application notes include recommended starting dilutions; optimal dilutions/concentrations should be determined by the end user.

|                     |              |
|---------------------|--------------|
| <b>Applications</b> | SDS-PAGE     |
|                     | Western blot |
|                     | ELISA        |
| <b>Form</b>         | Liquid       |

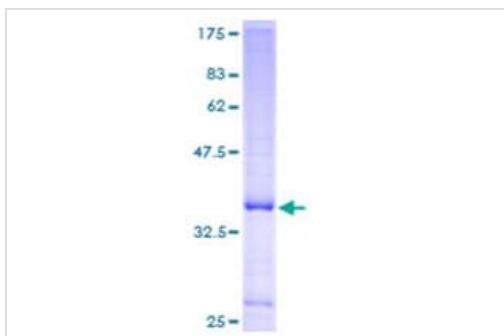
### Preparation and Storage

|                              |   |
|------------------------------|---|
| <b>Stability and Storage</b> | Shipped on dry ice. Upon delivery aliquot and store at -80°C. Avoid freeze / thaw cycles. |
|                              | pH: 8.00  |
|                              | Constituents: 0.31% Glutathione, 0.79% Tris HCl   |

### General Info

|                              |   |
|------------------------------|---|
| <b>Function</b>              | Plays a key role in the instruction of early lymphoid progenitors to develop into B lineage by repressing T-cell instructive Notch signals (By similarity). Specifically represses the transcription of the CDKN2A gene. Efficiently abrogates E2F1-dependent CDKN2A transactivation/de-repression. Binds to the consensus sequence 5'-[GA][CA]GACCCCCCCC-3'.     |
| <b>Tissue specificity</b>    | Widely expressed. In normal thymus, expressed in medullary epithelial cells and Hassle's corpuscles (at protein level). In tonsil, expressed in squamous epithelium and germinal center lymphocytes (at protein level). Up-regulated in a subset of lymphomas, as well as in a subset of breast, lung, colon, prostate and bladder carcinomas (at protein level). |
| <b>Sequence similarities</b> | Contains 1 BTB (POZ) domain.<br>Contains 4 C2H2-type zinc fingers.  |
| <b>Cellular localization</b> | Nucleus.  |

## Images



12.5% SDS-PAGE analysis of ab132406 stained with Coomassie Blue.

SDS-PAGE - Recombinant Human ZBTB7A protein  
(ab132406)

**Please note:** All products are "FOR RESEARCH USE ONLY. NOT FOR USE IN DIAGNOSTIC PROCEDURES"

## Our Abpromise to you: Quality guaranteed and expert technical support

- Replacement or refund for products not performing as stated on the datasheet
- Valid for 12 months from date of delivery
- Response to your inquiry within 24 hours
- We provide support in Chinese, English, French, German, Japanese and Spanish
- Extensive multi-media technical resources to help you
- We investigate all quality concerns to ensure our products perform to the highest standards

If the product does not perform as described on this datasheet, we will offer a refund or replacement. For full details of the Abpromise, please visit <https://www.abcam.com/abpromise> or contact our technical team.

## Terms and conditions

- Guarantee only valid for products bought direct from Abcam or one of our authorized distributors