

Product datasheet

Recombinant Human ZDHHC9 protein ab162420

1 Image

Description

Product name	Recombinant Human ZDHHC9 protein
Expression system	Wheat germ
Protein length	Full length protein
Animal free	No
Nature	Recombinant
Species	Human
Sequence	<pre> MSVMVVRKKVTRKWEKLPGRNTFCCDGRVMMARQKGIF YLTFLILGTCT LFFAFECRYLAVQLSPAIPVFAAMLFLFSMATLLRTSFSDP GVIPRALPD EAAFIEMEIEATNGAVPQQQRPPPRKQNFQINNQVCLKYCY TCKIFRPP RASHCSICDNCVERFDHHCPCWVGNCVVKRNYRYFYLFILS LSLLTIYVFA FNIVYALKSLKIGFLETLKETPGTVLEVLCFFTLWSVVGLT GFHTFLV ALNQTTNEDIKGSWTGKNRVQNPYSHGNVKNCCCEVLGG PLPPSVLDRRG ILPLEESGSRPPSTQETSSSLLPQSPAPTEHLNSNEMPED SSTPEEMPPP EPPEPPQEAEEAEK </pre>
Amino acids	1 to 364
Tags	GST tag N-Terminus

Specifications

Our [Abpromise guarantee](#) covers the use of **ab162420** in the following tested applications.

The application notes include recommended starting dilutions; optimal dilutions/concentrations should be determined by the end user.

Applications	Western blot
	ELISA
Form	Liquid

Additional notes

Preparation and Storage

Stability and Storage Shipped on dry ice. Upon delivery aliquot and store at -80°C. Avoid freeze / thaw cycles.
pH: 8.00
Constituents: 0.31% Glutathione, 0.79% Tris HCl

General Info

Function The ZDHHC9-GOLGA7 complex is a palmitoyltransferase specific for HRAS and NRAS.

Tissue specificity Highly expressed in kidney, skeletal muscle, brain, lung and liver. Absent in thymus, spleen and leukocytes.

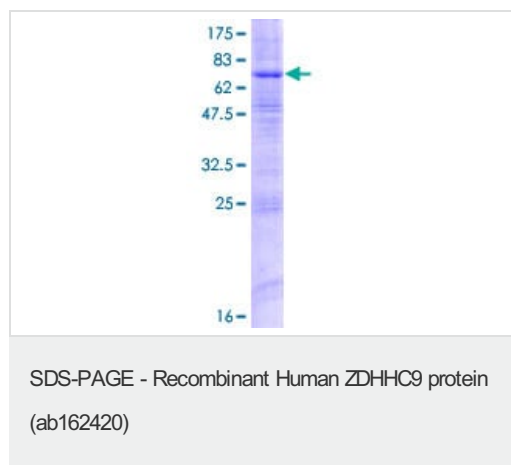
Involvement in disease Defects in ZDHHC9 are the cause of mental retardation syndromic X-linked ZDHHC9-related (MRXSZ) [MIM:300799]. A disorder characterized by significantly sub-average general intellectual functioning associated with impairments in adaptive behavior and manifested during the developmental period. Some patients have marfanoid habitus as an additional feature.

Sequence similarities Belongs to the DHHC palmitoyltransferase family. ERF2/ZDHHC9 subfamily. Contains 1 DHHC-type zinc finger.

Domain The DHHC domain is required for palmitoyltransferase activity.

Cellular localization Endoplasmic reticulum membrane. Golgi apparatus membrane.

Images



ab162420 on a 12.5% SDS-PAGE stained with Coomassie Blue.

Please note: All products are "FOR RESEARCH USE ONLY. NOT FOR USE IN DIAGNOSTIC PROCEDURES"

Our Promise to you: Quality guaranteed and expert technical support

- Replacement or refund for products not performing as stated on the datasheet
- Valid for 12 months from date of delivery
- Response to your inquiry within 24 hours

- We provide support in Chinese, English, French, German, Japanese and Spanish
- Extensive multi-media technical resources to help you
- We investigate all quality concerns to ensure our products perform to the highest standards

If the product does not perform as described on this datasheet, we will offer a refund or replacement. For full details of the Abpromise, please visit <https://www.abcam.com/abpromise> or contact our technical team.

Terms and conditions

- Guarantee only valid for products bought direct from Abcam or one of our authorized distributors