

Product datasheet

Recombinant Human Zinc Alpha 2 Glycoprotein  
ab207106

1 Image

Description

<b>Product name</b>	Recombinant Human Zinc Alpha 2 Glycoprotein	
<b>Purity</b>	> 90 % Densitometry.	
<b>Endotoxin level</b>	< 1.000 Eu/µg	
<b>Expression system</b>	HEK 293 cells	
<b>Accession</b>	<a href="#">P25311</a>	
<b>Protein length</b>	Full length protein	
<b>Animal free</b>	No	
<b>Nature</b>	Recombinant	
<b>Species</b>	Human	
<b>Sequence</b>	PGDYKDDDDKPAQGQENQDGRYSLTYITGLSKHVEDVPA FQALGSLNDLQ FFRYNSKDRKSQPMGLWRQVEGMEDWKQDSQLQKARE DIFMETLKDIVEY YNDSNGSHVLQGRFGCEIENNRSSGAFWKYYDGKDYIEF NKEIPAWVPF DPAAQITKQKWEAEPVYVQRAKAYLEEECPATLRKYLKYS KNILDRQDPP SVVVTSHQAPGEKKKLKCLAYDFYPGKIDVHWTRAGEVQ EPELRGDVLHN GNGTYQSWVVAVPPQDTAPYSCHVQHSSLAQPLVVPW EAS	
<b>Predicted molecular weight</b>	34 kDa including tags	
<b>Amino acids</b>	21 to 298	
<b>Tags</b>	DDDDK tag N-Terminus	
<b>Additional sequence information</b>	This product is the mature full length protein from aa 21 to 298. The signal peptide is not included.	

Specifications

Our [Abpromise guarantee](#) covers the use of **ab207106** in the following tested applications.

The application notes include recommended starting dilutions; optimal dilutions/concentrations should be determined by the end user.

**Applications** SDS-PAGE

**Form** Lyophilized

### Preparation and Storage

**Stability and Storage** Shipped at 4°C. Upon delivery aliquot. Store at -80°C. Avoid freeze / thaw cycle.

Constituents: 0.24% Tris, 0.29% Sodium chloride

Lyophilised from a 0.4 µm filtered solution.

**Reconstitution** Add deionized water to prepare a working stock solution of 0.5 mg/mL and let the lyophilised pellet dissolve completely.

### General Info

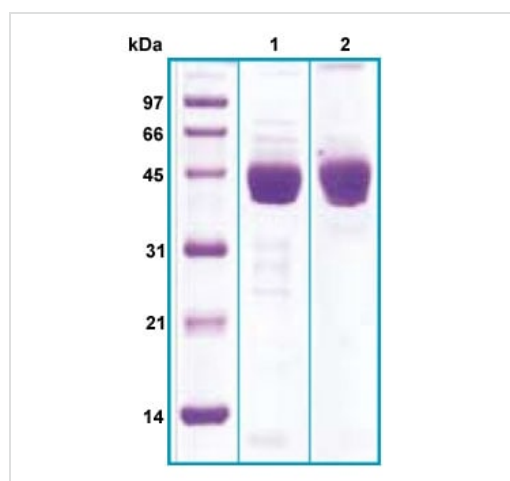
**Function** Stimulates lipid degradation in adipocytes and causes the extensive fat losses associated with some advanced cancers. May bind polyunsaturated fatty acids.

**Tissue specificity** Blood plasma, seminal plasma, urine, saliva, sweat, epithelial cells of various human glands, liver.

**Sequence similarities** Belongs to the MHC class I family.  
Contains 1 Ig-like C1-type (immunoglobulin-like) domain.

**Cellular localization** Secreted.

### Images



12% SDS-PAGE analysis of ab207106.

Lane 1: Reduced and heated sample, 10µg/lane.

Lane 2: Non-reduced and non-heated sample, 10µg/lane.

SDS-PAGE - Recombinant Human Zinc Alpha 2  
Glycoprotein (ab207106)

**Please note:** All products are "FOR RESEARCH USE ONLY. NOT FOR USE IN DIAGNOSTIC PROCEDURES"

**Our Abpromise to you: Quality guaranteed and expert technical support**

- 
- Replacement or refund for products not performing as stated on the datasheet
  - Valid for 12 months from date of delivery
  - Response to your inquiry within 24 hours
  
  - We provide support in Chinese, English, French, German, Japanese and Spanish
  - Extensive multi-media technical resources to help you
  - We investigate all quality concerns to ensure our products perform to the highest standards

If the product does not perform as described on this datasheet, we will offer a refund or replacement. For full details of the Abpromise, please visit <https://www.abcam.com/abpromise> or contact our technical team.

### **Terms and conditions**

---

- Guarantee only valid for products bought direct from Abcam or one of our authorized distributors