

Product datasheet

Recombinant Human ZNF280C protein ab163143

1 Image

Overview

<b>Product name</b>	Recombinant Human ZNF280C protein
<b>Protein length</b>	Full length protein

Description

<b>Nature</b>	Recombinant
<b>Source</b>	Wheat germ
<b>Amino Acid Sequence</b>	
<b>Species</b>	Human

<b>Sequence</b>	<p>MDDDKPFQPKNISKMAELFMECEEEEELEPWQKKVEE  TQDEDDDELIFVGE  ISSKPAISNILNRGHSSSSSKGIKSEPHSPGIPEIFRTA  SQRCRDPPSN  PVAASPRFHLVSKSSQSSVTVENASKPDFTKNSQVG  SDNSSILLFDSTQE  SLPPSQDIPAIFREGMKNTSYVLKHPSTSKVNSVTPKK  PKTSEDVPQINP  STSLPLIGSPPVTSSQVMLSKGTNTSSPYDAGADYLRA  CPKCNVQFNLLD  PLKYHMKHCCPDMITKFLGVVKSERPCDEDKTDSET  GKLIMLVNEFYGG  RHEGVTEKEPKTYTTFKCFSCSKVLKNNIRFMNHMKH  HLELEKQNNESWE  NHTTCQHCRYQYPTPFQLQCHIESTHTPHEFSTICKICE  LSFETE HILLQ  HMKDTHKPGEMPYVCQVCQFRSSTFSDVEAHFRAAH  ENTKNLLCPFCLKV  SKMATPYMNHMKHQKKGVHRCPKCRLQFLTSKEKA  EHKAQHRTFIKPKE  LEGLPPGAKVTIRASLGPLQSKLPTAPFGCAPGTSFLQ  VTPPTSQNTTAR  NPRKSNASRSKTSKLHATTSTASKVNTSKPRGRIAKSK  AKPSYKQKRQRN  RKNKMSLALKNIRCRRGIHKCIECHSKIKDFASHFSMIH  CSFCKYNTNC</p>
-----------------	---

NKAFVNHMMSSHSNHPGKRFCIFKKHSGTLRGITLVCL  
KCDFLADSSGLD  
RMAKHLSQRKTHTCQVIIENVSKSTSTSEPTTGCSLK

**Amino acids** 1 to 737  
**Tags** GST tag N-Terminus

### Specifications

---

Our [Abpromise guarantee](#) covers the use of **ab163143** in the following tested applications.

The application notes include recommended starting dilutions; optimal dilutions/concentrations should be determined by the end user.

**Applications** ELISA  
Western blot

**Form** Liquid

**Additional notes** Protein concentration is above or equal to 0.05 mg/ml.

### Preparation and Storage

---

**Stability and Storage** Shipped on dry ice. Upon delivery aliquot and store at -80°C. Avoid freeze / thaw cycles.  
pH: 8.00  
Constituents: 0.31% Glutathione, 0.79% Tris HCl

### General Info

---

**Function** May function as a transcription factor.

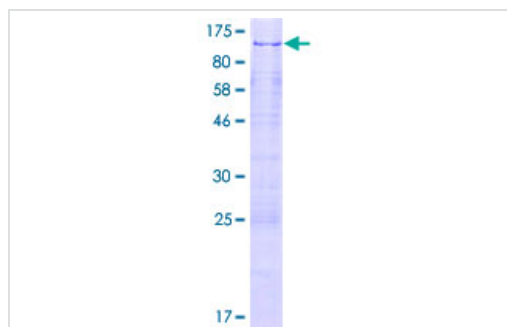
**Sequence similarities** Contains 5 C2H2-type zinc fingers.

**Post-translational modifications** Phosphorylated upon DNA damage, probably by ATM or ATR.

**Cellular localization** Nucleus.

### Images

---



ab163143 on a 12.5% SDS-PAGE stained with Coomassie Blue.

SDS-PAGE - Recombinant Human ZNF280C protein  
(ab163143)

**Please note:** All products are "FOR RESEARCH USE ONLY AND ARE NOT INTENDED FOR DIAGNOSTIC OR THERAPEUTIC USE"

### **Our Abpromise to you: Quality guaranteed and expert technical support**

---

- Replacement or refund for products not performing as stated on the datasheet
- Valid for 12 months from date of delivery
- Response to your inquiry within 24 hours
  
- We provide support in Chinese, English, French, German, Japanese and Spanish
- Extensive multi-media technical resources to help you
- We investigate all quality concerns to ensure our products perform to the highest standards

If the product does not perform as described on this datasheet, we will offer a refund or replacement. For full details of the Abpromise, please visit <https://www.abcam.com/abpromise> or contact our technical team.

### **Terms and conditions**

---

- Guarantee only valid for products bought direct from Abcam or one of our authorized distributors