

Product datasheet

Recombinant Human ZP2 protein ab159887

1 Image

Overview

Product name	Recombinant Human ZP2 protein
Protein length	Protein fragment

Description

Nature	Recombinant
Source	Wheat germ
Amino Acid Sequence	
Species	Human
Sequence	NSSCQPVFEAQSQGLVRFHIPLNGCGTRYKFEDDKVV YENEIHALWTDFF PSKISRDSSEFRMTVKCSYSRNDMLLNINVESLTPPVAS VKLGPFTLILQS YPDNSYQQPY
Amino acids	400 to 509
Tags	proprietary tag N-Terminus

Specifications

Our [Abpromise guarantee](#) covers the use of **ab159887** in the following tested applications. The application notes include recommended starting dilutions; optimal dilutions/concentrations should be determined by the end user.

Applications	ELISA Western blot
Form	Liquid
Additional notes	Protein concentration is above or equal to 0.05 mg/ml.

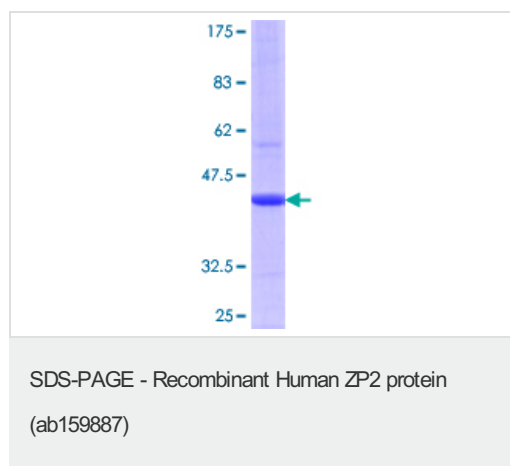
Preparation and Storage

Stability and Storage	Shipped on dry ice. Upon delivery aliquot and store at -80°C. Avoid freeze / thaw cycles. pH: 8.00 Constituents: 0.31% Glutathione, 0.79% Tris HCl
------------------------------	--

General Info

Function	The mammalian zona pellucida, which mediates species-specific sperm binding, induction of the acrosome reaction and prevents post-fertilization polyspermy, is composed of three to four glycoproteins, ZP1, ZP2, ZP3, and ZP4. ZP2 may act as a secondary sperm receptor.
Tissue specificity	Oocytes.
Sequence similarities	Belongs to the ZP domain family. ZPA subfamily. Contains 1 ZP domain.
Developmental stage	Expressed during the 2-week growth phase of oogenesis, prior to ovulation.
Domain	The ZP domain is involved in the polymerization of the ZP proteins to form the zona pellucida.
Post-translational modifications	Proteolytically cleaved before the transmembrane segment to yield the secreted ectodomain incorporated in the zona pellucida. Proteolytically cleaved in the N-terminal part after fertilization, yielding a N-terminal peptide of about 30 kDa which remains covalently attached to the C-terminal peptide via disulfide bond(s). This cleavage may play an important role in the post-fertilization block to polyspermy. O-glycosylated; contains sulfate-substituted glycans.
Cellular localization	Secreted > extracellular space > extracellular matrix and Cell membrane.

Images



ab159887 on a 12.5% SDS-PAGE stained with Coomassie Blue.

Please note: All products are "FOR RESEARCH USE ONLY AND ARE NOT INTENDED FOR DIAGNOSTIC OR THERAPEUTIC USE"

Our Abpromise to you: Quality guaranteed and expert technical support

- Replacement or refund for products not performing as stated on the datasheet
- Valid for 12 months from date of delivery
- Response to your inquiry within 24 hours

- We provide support in Chinese, English, French, German, Japanese and Spanish
- Extensive multi-media technical resources to help you
- We investigate all quality concerns to ensure our products perform to the highest standards

If the product does not perform as described on this datasheet, we will offer a refund or replacement. For full details of the Abpromise, please visit <https://www.abcam.com/abpromise> or contact our technical team.

Terms and conditions

- Guarantee only valid for products bought direct from Abcam or one of our authorized distributors