

Product datasheet

Recombinant mouse Activin A protein (Animal Free)
ab187245

2 Images

Description

Product name	Recombinant mouse Activin A protein (Animal Free)	
Biological activity	The activity is determined by the ability to induce cytotoxicity of MPC-11 cells and is typically less than 2 ng/mL	
Purity	> 95 % SDS-PAGE. Protein Content and Purity (typically = 95%) determined by: HPLC, Reducing and Non-reducing SDS-PAGE, UV spectroscopy at 280 nm.	
Endotoxin level	< 1.000 Eu/µg	
Expression system	Escherichia coli	
Accession	Q04998	
Protein length	Full length protein	
Animal free	Yes	
Nature	Recombinant	
Species	Mouse	
Sequence	MGLECDGKVN ICCKKQFFVS FKDIGWNDWI IAPSGYHANY CECECP SHIA GTSGSSLSFH STVINHYRMR GHSPFANLKS CCVPTKLRPM SMLYDDGQN IIKKDIQNMI VEECGCS	
Predicted molecular weight	26 kDa	
Amino acids	309 to 424	
Additional sequence information	Mature non-glycosylated homodimer protein, containing two 117 amino acid chains.	

Specifications

Our [Abpromise guarantee](#) covers the use of **ab187245** in the following tested applications.

The application notes include recommended starting dilutions; optimal dilutions/concentrations should be determined by the end user.

Applications	HPLC
	SDS-PAGE
	Functional Studies
Form	Lyophilized

Preparation and Storage

Stability and Storage

Shipped at 4°C. Store at -20°C long term. For long term storage it is recommended to add a carrier protein on reconstitution (0.1% HSA or BSA).

This product is an active protein and may elicit a biological response in vivo, handle with caution.

Reconstitution

Centrifuge vial before opening. When reconstituting the product, gently pipet and wash down the sides of the vial to ensure full recovery of the protein into solution. It is recommended to reconstitute the lyophilized product with sterile water, which can then be further diluted to other aqueous solutions.

General Info

Function

Inhibins and activins inhibit and activate, respectively, the secretion of follitropin by the pituitary gland. Inhibins/activins are involved in regulating a number of diverse functions such as hypothalamic and pituitary hormone secretion, gonadal hormone secretion, germ cell development and maturation, erythroid differentiation, insulin secretion, nerve cell survival, embryonic axial development or bone growth, depending on their subunit composition. Inhibins appear to oppose the functions of activins.

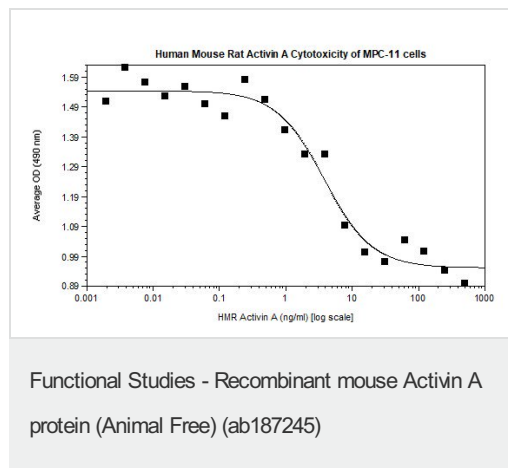
Sequence similarities

Belongs to the TGF-beta family.

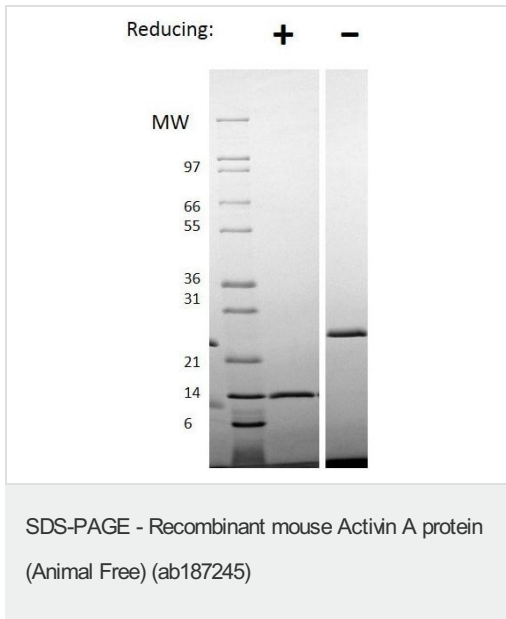
Cellular localization

Secreted.

Images



Functional analysis of ab187245



SDS PAGE analysis of ab187245 under non-reducing (-) and reducing (+) conditions. Stained with Coomassie Blue.

Please note: All products are "FOR RESEARCH USE ONLY. NOT FOR USE IN DIAGNOSTIC PROCEDURES"

Our Abpromise to you: Quality guaranteed and expert technical support

- Replacement or refund for products not performing as stated on the datasheet
- Valid for 12 months from date of delivery
- Response to your inquiry within 24 hours
- We provide support in Chinese, English, French, German, Japanese and Spanish
- Extensive multi-media technical resources to help you
- We investigate all quality concerns to ensure our products perform to the highest standards

If the product does not perform as described on this datasheet, we will offer a refund or replacement. For full details of the Abpromise, please visit <https://www.abcam.com/abpromise> or contact our technical team.

Terms and conditions

- Guarantee only valid for products bought direct from Abcam or one of our authorized distributors