

Product datasheet

Recombinant mouse CX3CL1 protein (Active) ab240868

1 Image

Description

<b>Product name</b>	Recombinant mouse CX3CL1 protein (Active)
<b>Biological activity</b>	Fully biologically active when compared to standard. The ED <sub>50</sub> as determined by a cell proliferation assay using human peripheral blood lymphocytes (PBL) is less than 0.5 µg/ml, corresponding to a specific activity of >2000 IU/mg.
<b>Purity</b>	> 95 % SDS-PAGE.
<b>Endotoxin level</b>	< 1.000 Eu/µg
<b>Expression system</b>	Escherichia coli
<b>Accession</b>	<a href="#">O35188</a>
<b>Protein length</b>	Protein fragment
<b>Animal free</b>	No
<b>Nature</b>	Recombinant
<b>Species</b>	Mouse
<b>Sequence</b>	QHLGMTKCEIMCGKMTSRIPVALLIRYQLNQESCGKRAML ETTQHRRFC ADPKEKWWQDAMKHLDHQAAALTKNG
<b>Predicted molecular weight</b>	9 kDa including tags
<b>Amino acids</b>	25 to 100

Specifications

Our [Abpromise guarantee](#) covers the use of **ab240868** in the following tested applications.

The application notes include recommended starting dilutions; optimal dilutions/concentrations should be determined by the end user.

<b>Applications</b>	Functional Studies SDS-PAGE
<b>Form</b>	Lyophilized

Preparation and Storage

<b>Stability and Storage</b>	Shipped at 4°C. Store at -20°C or -80°C. Avoid freeze / thaw cycle. Constituent: PBS
------------------------------	---

0.2 µm filtered

This product is an active protein and may elicit a biological response in vivo, handle with caution.

## Reconstitution

We recommend that this vial be briefly centrifuged prior to opening to bring the contents to the bottom. Reconstitute in sterile distilled water or aqueous buffer containing 0.1 % BSA to a concentration of 0.1-1.0 mg/mL. Stock solutions should be apportioned into working aliquots and stored at = -20 °C. Further dilutions should be made in appropriate buffered solutions.

## General Info

---

### Function

The soluble form is chemotactic for T-cells and monocytes, but not for neutrophils. The membrane-bound form promotes adhesion of those leukocytes to endothelial cells. May play a role in regulating leukocyte adhesion and migration processes at the endothelium. Binds to CX3CR1.

### Tissue specificity

Small intestine, colon, testis, prostate, heart, brain, lung, skeletal muscle, kidney and pancreas.

### Sequence similarities

Belongs to the intercrine delta family.

### Post-translational modifications

A soluble short 95 kDa form may be released by proteolytic cleavage from the long membrane-anchored form.

O-glycosylated with core 1 or possibly core 8 glycans.

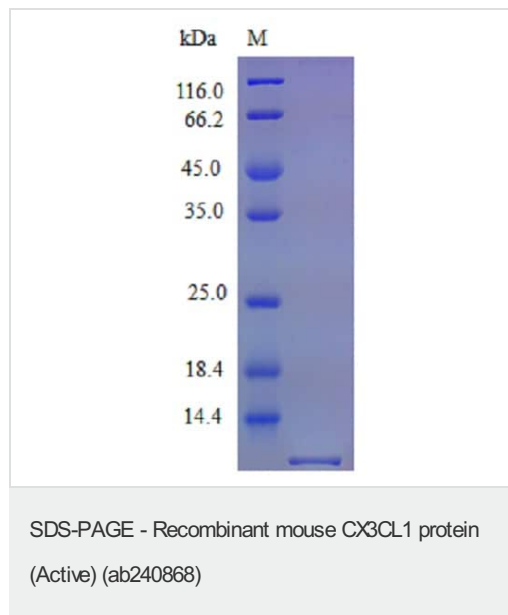
### Cellular localization

Secreted and Cell membrane.

---

## Images

---



SDS-PAGE - Recombinant Mouse CX3CL1 protein (Active)  
(ab240868)

**Please note:** All products are "FOR RESEARCH USE ONLY. NOT FOR USE IN DIAGNOSTIC PROCEDURES"

## Our Abpromise to you: Quality guaranteed and expert technical support

---

- Replacement or refund for products not performing as stated on the datasheet
- Valid for 12 months from date of delivery

- Response to your inquiry within 24 hours
- We provide support in Chinese, English, French, German, Japanese and Spanish
- Extensive multi-media technical resources to help you
- We investigate all quality concerns to ensure our products perform to the highest standards

If the product does not perform as described on this datasheet, we will offer a refund or replacement. For full details of the Abpromise, please visit <https://www.abcam.com/abpromise> or contact our technical team.

### **Terms and conditions**

---

- Guarantee only valid for products bought direct from Abcam or one of our authorized distributors