

Product datasheet

Recombinant Mouse Decorin protein ab206790

1 Image

Description

Product name	Recombinant Mouse Decorin protein	
Purity	> 90 % SDS-PAGE. ab206790 was purified using conventional chromatography techniques.	
Endotoxin level	< 1.000 Eu/µg	
Expression system	Insect cells	
Accession	P28654	
Protein length	Full length protein	
Animal free	No	
Nature	Recombinant	
Species	Mouse	
Sequence	GPFEQRGLDFDFMLEDEASGIIPYDPDNPLISMCPYRCQ CHLRVVQCSDLG LDKVPWFDFPPDITLLDLQNNKITEIKEGAFKNLKDHLTL ILVNNKISKIS PEAFKPLVKLERLYLSKNQLKELPEKMPRTLQELRVH ENEITKLRKSDFN GLNNVLVIELGGNPLKNSGIENGAFAQGLKSLSYIRISDTN ITAIPQGLPT SLTEVHLDGKNITKVDAPSLKGLINLSKLGLSFNSITVM ENGLANVPHL RELHLDNNKLLRVPAGLAQHKYIQVVYLHNNNISAVGQ NDFCRAGHPSRK ASYSAVSLYGNPVRVYWEIFPNTFRCVYVRSAILQLGNYK HHHHHH	
Predicted molecular weight	39 kDa including tags	
Amino acids	17 to 354	
Tags	His tag C-Terminus	
Additional sequence information	This product is for the mature full length protein. The signal peptide is not included. NP_001177380.	

Specifications

Our [Abpromise guarantee](#) covers the use of **ab206790** in the following tested applications.

The application notes include recommended starting dilutions; optimal dilutions/concentrations should be determined by the end user.

Applications SDS-PAGE

Form Liquid

Preparation and Storage

Stability and Storage Shipped at 4°C. Store at +4°C short term (1-2 weeks). Upon delivery aliquot. Store at -20°C or -80°C. Avoid freeze / thaw cycle.

pH: 7.40

Constituents: 30% Glycerol, 0.00174% PMSF, 69% PBS

General Info

Function May affect the rate of fibrils formation.

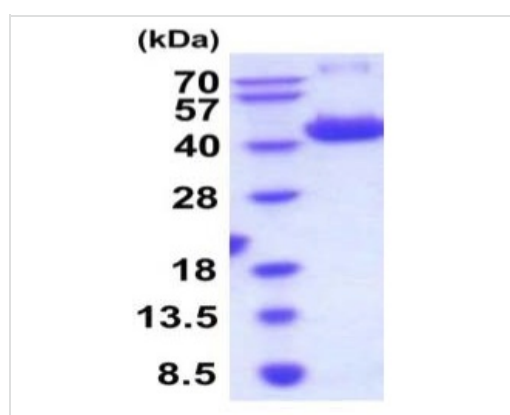
Involvement in disease Defects in DCN are the cause of congenital stromal corneal dystrophy (CSCD) [MIM:610048]. Corneal dystrophies are inherited, bilateral, primary alterations of the cornea that are not associated with prior inflammation or secondary to systemic disease. Most show autosomal dominant inheritance.

Sequence similarities Belongs to the small leucine-rich proteoglycan (SLRP) family. SLRP class I subfamily. Contains 12 LRR (leucine-rich) repeats.

Post-translational modifications The attached glycosaminoglycan chain can be either chondroitin sulfate or dermatan sulfate depending upon the tissue of origin.

Cellular localization Secreted > extracellular space > extracellular matrix.

Images



15% SDS-PAGE analysis of ab206790 (3µg). MW: 40-57kDa
(SDS-PAGE under reducing conditions.)

SDS-PAGE - Recombinant Mouse Decorin protein
(ab206790)

Please note: All products are "FOR RESEARCH USE ONLY. NOT FOR USE IN DIAGNOSTIC PROCEDURES"

Our Abpromise to you: Quality guaranteed and expert technical support

- Replacement or refund for products not performing as stated on the datasheet
- Valid for 12 months from date of delivery
- Response to your inquiry within 24 hours

- We provide support in Chinese, English, French, German, Japanese and Spanish
- Extensive multi-media technical resources to help you
- We investigate all quality concerns to ensure our products perform to the highest standards

If the product does not perform as described on this datasheet, we will offer a refund or replacement. For full details of the Abpromise, please visit <https://www.abcam.com/abpromise> or contact our technical team.

Terms and conditions

- Guarantee only valid for products bought direct from Abcam or one of our authorized distributors