

## Product datasheet

# Recombinant Mouse FKBP12 protein ab201895

1 Image

### Description

<b>Product name</b>	Recombinant Mouse FKBP12 protein	
<b>Purity</b>	> 95 % SDS-PAGE. ab201895 was purified using conventional chromatography techniques.	
<b>Expression system</b>	Escherichia coli	
<b>Accession</b>	<a href="#">P26883</a>	
<b>Protein length</b>	Full length protein	
<b>Animal free</b>	No	
<b>Nature</b>	Recombinant	
<b>Species</b>	Mouse	
<b>Sequence</b>	MGSSHHHHHHSSGLVPRGSHMGSHMGVQVETISPGDGR TFPKRGQTCVVH YTGMLLEDGKKFDSSRDRNKPFKFTLGKQEVIRGWEEGVA QMSVGQRAKLI ISSDYAYGATGHPGIIPPHATLVFDVELLKLE	
<b>Predicted molecular weight</b>	14 kDa including tags	
<b>Amino acids</b>	1 to 108	
<b>Tags</b>	His tag N-Terminus	
<b>Additional sequence information</b>	NP_032045.	

### Specifications

Our [Abpromise guarantee](#) covers the use of **ab201895** in the following tested applications.

The application notes include recommended starting dilutions; optimal dilutions/concentrations should be determined by the end user.

<b>Applications</b>	SDS-PAGE Mass Spectrometry
<b>Mass spectrometry</b>	MALDI-TOF
<b>Form</b>	Liquid

### Preparation and Storage

## Stability and Storage

Shipped at 4°C. Store at +4°C short term (1-2 weeks). Upon delivery aliquot. Store at -20°C or -80°C. Avoid freeze / thaw cycle.

pH: 7.40

Constituents: 79% PBS, 0.02% DTT, 20% Glycerol (glycerin, glycerine)

## General Info

### Function

May play a role in modulation of ryanodine receptor isoform-1 (RYR-1), a component of the calcium release channel of skeletal muscle sarcoplasmic reticulum. There are four molecules of FKBP12 per skeletal muscle RYR. PPlases accelerate the folding of proteins. It catalyzes the cis-trans isomerization of proline imidic peptide bonds in oligopeptides.

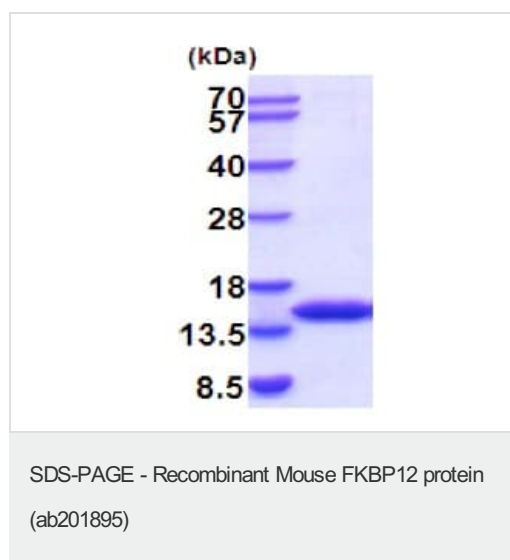
### Sequence similarities

Belongs to the FKBP-type PPlase family. FKBP1 subfamily.  
Contains 1 PPlase FKBP-type domain.

### Cellular localization

Cytoplasm.

## Images



15% SDS-PAGE analysis of ab201895 (3µg).

**Please note:** All products are "FOR RESEARCH USE ONLY. NOT FOR USE IN DIAGNOSTIC PROCEDURES"

## Our Abpromise to you: Quality guaranteed and expert technical support

- Replacement or refund for products not performing as stated on the datasheet
- Valid for 12 months from date of delivery
- Response to your inquiry within 24 hours
- We provide support in Chinese, English, French, German, Japanese and Spanish
- Extensive multi-media technical resources to help you
- We investigate all quality concerns to ensure our products perform to the highest standards

If the product does not perform as described on this datasheet, we will offer a refund or replacement. For full details of the Abpromise, please visit <https://www.abcam.com/abpromise> or contact our technical team.

## Terms and conditions

---

- Guarantee only valid for products bought direct from Abcam or one of our authorized distributors