

## Product datasheet

# Recombinant Mouse Galectin 1 protein ab134630

★★★★★ 1 Abreviews 1 Image

### Description

<b>Product name</b>	Recombinant Mouse Galectin 1 protein
<b>Purity</b>	> 95 % SDS-PAGE. ab134630 was purified using conventional chromatography techniques.
<b>Expression system</b>	Escherichia coli
<b>Accession</b>	<a href="#">P16045</a>
<b>Protein length</b>	Full length protein
<b>Animal free</b>	No
<b>Nature</b>	Recombinant
<b>Species</b>	Mouse
<b>Sequence</b>	MGSSHHHHHH SSGLVPRGSH MGSHTACGLV ASNLNLKPGE CLKVRGEVAS DAKSFVLNLG KDSNNLCLHF NPRFNAHGDA NTVCNTKED GTWGTEHREP AFPFQPGSIT EVCITFDQAD LTIKLPDGHE FKFPNRLNME AINYMAADGD FKIKCVAFE
<b>Predicted molecular weight</b>	17 kDa including tags
<b>Amino acids</b>	1 to 135
<b>Tags</b>	His tag N-Terminus

### Specifications

Our [Abpromise guarantee](#) covers the use of **ab134630** in the following tested applications.

The application notes include recommended starting dilutions; optimal dilutions/concentrations should be determined by the end user.

<b>Applications</b>	Mass Spectrometry SDS-PAGE
<b>Mass spectrometry</b>	MALDI-TOF
<b>Form</b>	Liquid

### Preparation and Storage

**Stability and Storage** Shipped at 4°C. Store at +4°C short term (1-2 weeks). Upon delivery aliquot. Store at -20°C or -80°C. Avoid freeze / thaw cycle.

pH: 8.00

Constituents: 0.32% Tris HCl, 10% Glycerol (glycerin, glycerine), 0.88% Sodium chloride

## General Info

---

### Function

May regulate apoptosis, cell proliferation and cell differentiation. Binds beta-galactoside and a wide array of complex carbohydrates. Inhibits CD45 protein phosphatase activity and therefore the dephosphorylation of Lyn kinase.

### Tissue specificity

Expressed in placenta, maternal decidua and fetal membranes. Within placenta, expressed in trophoblasts, stromal cells, villous endothelium, syncytiotrophoblast apical membrane and villous stroma. Within fetal membranes, expressed in amnion, chorioamniotic mesenchyma and chorion (at protein level). Expressed in cardiac, smooth, and skeletal muscle, neurons, thymus, kidney and hematopoietic cells.

### Sequence similarities

Contains 1 galectin domain.

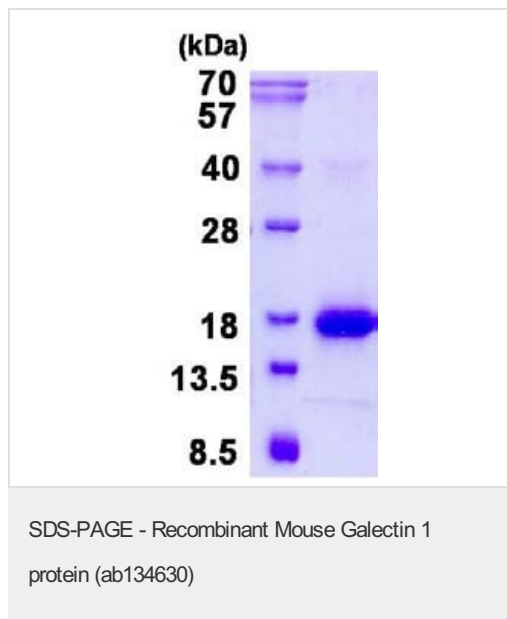
### Cellular localization

Secreted > extracellular space > extracellular matrix.

---

## Images

---



15% SDS-PAGE analysis of ab134630 (3µg)

**Please note:** All products are "FOR RESEARCH USE ONLY. NOT FOR USE IN DIAGNOSTIC PROCEDURES"

## Our Abpromise to you: Quality guaranteed and expert technical support

---

- Replacement or refund for products not performing as stated on the datasheet
- Valid for 12 months from date of delivery
- Response to your inquiry within 24 hours
- We provide support in Chinese, English, French, German, Japanese and Spanish
- Extensive multi-media technical resources to help you

- We investigate all quality concerns to ensure our products perform to the highest standards

If the product does not perform as described on this datasheet, we will offer a refund or replacement. For full details of the Abpromise, please visit <https://www.abcam.com/abpromise> or contact our technical team.

### **Terms and conditions**

---

- Guarantee only valid for products bought direct from Abcam or one of our authorized distributors